

Product datasheet for **MR203309**

Olig3 (NM_053008) Mouse Tagged ORF Clone

Product data:

Product Type:	Expression Plasmids
Product Name:	Olig3 (NM_053008) Mouse Tagged ORF Clone
Tag:	Myc-DDK
Symbol:	Olig3
Synonyms:	Bhlhb7; bHLHe20; oligo3
Mammalian Cell Selection:	Neomycin
Vector:	pCMV6-Entry (PS100001)
E. coli Selection:	Kanamycin (25 ug/mL)
ORF Nucleotide Sequence:	>MR203309 ORF sequence Red=Cloning site Blue=ORF Green=Tags(s)

TTTTGTAATACGACTCACTATAGGGCGCCGGGAATTCGTCGACTGGATCCGGTACCGAGGAGATCTGCC
GCC**CGATCGCC**

ATGAATTCTGATTGAGCTCTGTCTCCAGCAGAGCGTCATCTCCGGACATGGATGAGATGTACCTAAGAG
ACCACCACCACCGCCACCACCACCACCATCAGGAGAGTCGTCTGAACTCGGTCTCCTCCACACAGGGCGA
TATGGTCCAGAAGATGCCAGGGAAAGCCTCTCGAGGGCAGGCCAAGGCTGCAGGAGAAAGCAGCAAG
TACAAAATCAAGAAGCAGCTGTCGGAGCAGGATCTTCAGCAGTTGCGGCTGAAGATCAACGGACCGGAAC
GCAAGAGGATGCACGACCTGAACCTCGCCATGGATGGTCTGCGCGAGGTCATGCCCTACGCTCACGGGCC
CTCGGTGCGCAAGCTCTCCAAGATCGCCACTCTGCTTCTGGCCAGAACTACATCCTCATGCTCACCAGC
TCCTTGAGGAGATGAAGAGTTGGTTGGAGAGATCTACGGGGACACCACTCGGCCTTCCACTGTGGGA
CTGTGGGGCATTGCGCCGGCCACCCGGCACACGCAGCCAACGCTGTGCACCCGGTGCACCCTATCCTGGG
CGGCGCGCTCTCCTTGGAATGCCTCGTCCCCTCTGTCCGCGACCTCCCTGCCGACATTGGCACCATC
CGTCTCCCACTCACTGCTCAAGGCGCCCTCCACGCCGCCGCGCTACAATTGGGCAGCGGCTTCCAGC
ACTGGGCGGGGCTGCCCTGTCCCTGCACCATCTGCCAGATGCCACCACCGCCGACCTGTCCGCTCTTC
CACCGCCAACATGGCCCGGCTTTCGGCTGAATCCAAGGACTTGCTCAAG

ACGCGTACGCGGCCGCTCGAGCAGAACTCATCTCAGAAGAGGATCTGGCAGCAAATGATATCCTGGATT
ACAAGGATGACGACGATAAGGTTTAA



[View online »](#)

Protein Sequence: >MR203309 protein sequence
 Red=Cloning site Green=Tags(s)

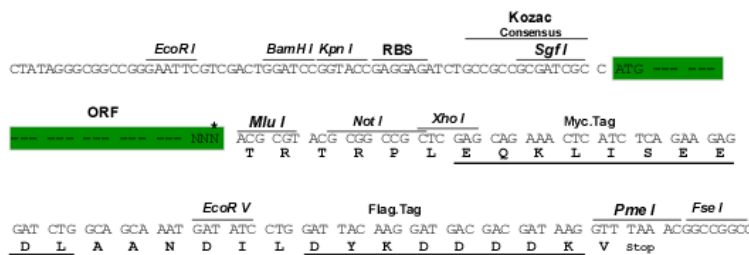
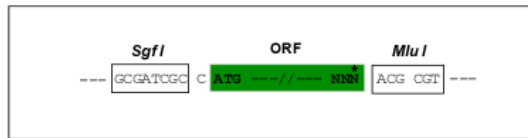
MNSDSSSVSSRASSPDMDEMYLRDHHRRHHHHHQQESRLNSVSSTQGDMVQKMPGESLSRAGAKAAGESK
 YKIKKQLSEQDLQQLRLKINGRERKRMHDLNAMDGLREVMPYAHGPSVRKLSKIATLLLLARNYILMLTS
 SLEEMKRLVGEIYGGHSAFHCGTVGHSAGHPAHAANAVHPVHPILGGALSSGNASSPLSATSLPTIGTI
 RPPHSLKAPSTPPALQLGSGFQHWAGLPCPCTICQMPPPPHLSALSTANMARLSAESKDLLK

TRTRPLEQKLISEEDLAANDILDYKDDDDKV

Restriction Sites: SgfI-MluI

Cloning Scheme:

Cloning sites used for ORF Shuttling:



* The last codon before the Stop codon of the ORF

ACCN: NM_053008

ORF Size: 822 bp

OTI Disclaimer: The molecular sequence of this clone aligns with the gene accession number as a point of reference only. However, individual transcript sequences of the same gene can differ through naturally occurring variations (e.g. polymorphisms), each with its own valid existence. This clone is substantially in agreement with the reference, but a complete review of all prevailing variants is recommended prior to use. [More info](#)

OTI Annotation: This clone was engineered to express the complete ORF with an expression tag. Expression varies depending on the nature of the gene.

Components: The ORF clone is ion-exchange column purified and shipped in a 2D barcoded Matrix tube containing 10ug of transfection-ready, dried plasmid DNA (reconstitute with 100 ul of water).

Reconstitution Method:

1. Centrifuge at 5,000xg for 5min.
2. Carefully open the tube and add 100ul of sterile water to dissolve the DNA.
3. Close the tube and incubate for 10 minutes at room temperature.
4. Briefly vortex the tube and then do a quick spin (less than 5000xg) to concentrate the liquid at the bottom.
5. Store the suspended plasmid at -20°C. The DNA is stable for at least one year from date of shipping when stored at -20°C.

RefSeq: [NM_053008.3](#)

RefSeq Size: 2086 bp

RefSeq ORF: 822 bp

Locus ID: 94222

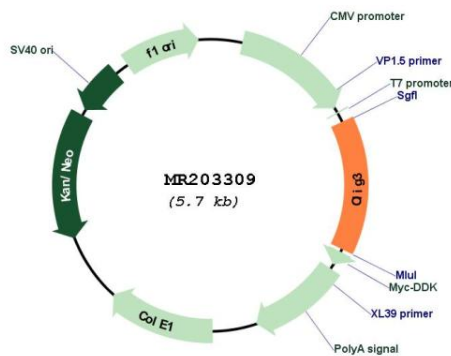
UniProt ID: [Q6PFG8](#)

Cytogenetics: 10 A3

MW: 29.5 kDa

Gene Summary: May determine the distinct specification program of class A neurons in the dorsal part of the spinal cord and suppress specification of class B neurons.[UniProtKB/Swiss-Prot Function]

Product images:



Circular map for MR203309