

## Product datasheet for MR203298

### Pou2af1 (NM\_011136) Mouse Tagged ORF Clone

#### Product data:

|                           |   |
|---------------------------|---|
| Product Type:             | Expression Plasmids   |
| Product Name:             | Pou2af1 (NM_011136) Mouse Tagged ORF Clone                        |
| Tag:                      | Myc-DDK   |
| Symbol:                   | Pou2af1   |
| Synonyms:                 | Bob-1; BOB.1; Bob1; OBF-1; OBF.1; OCA-B; OCAB                     |
| Mammalian Cell Selection: | Neomycin  |
| Vector:                   | pCMV6-Entry (PS100001)  |
| E. coli Selection:        | Kanamycin (25 ug/mL)  |
| ORF Nucleotide Sequence:  | >MR203298 ORF sequence<br>Red=Cloning site Blue=ORF Green=Tags(s) |

TTTTGTAATACGACTCACTATAGGGCGCCGGGAATTCGTCGACTGGATCCGGTACCGAGGAGATCTGCC  
GCC**CGATCGCC**

ATGCTCTGGCAAAAATCCGCAGCTCCAGAGCAAGCTCCTGCCCCACCAAGGCCACACCAGGGTGTTCGAG  
TCAAGGAGCCAGTGAAGGAGCTACTGAGAAGAAAGCGTGGCCATACCAGCGTTGGGGCAGCTGGCCACC  
GACCGCGTGGTACTGCCCCACCAGCCCTGGCCACCTACAGCACTGTGGGTCTTCTGCCTTGACATG  
GAGTTTTCTGCTTCCACAGTGACAGAGGAGGGAACATTATGTGCTGGCTGGCTCTCCAACCTGCCCGG  
CCACTTTCAGCCATTGGCTCCATGGACACCCTACACGGAGTATGTGCCATGAAGCTGTCAGCTGCCC  
CTACTCCACTGACATGTACGTGCAGCCTGTGTGCCCCAGCTACACAGTGGTGGGACCCTCCTCGGTGTTG  
ACCTATGCTTCTCCACCCTCATCACTAATGTCACGCCAAGAAGCACTGTACACCCGCGGTGGGGCCCC  
AGCTGGAGGGTCCCGAGCACCAGGCGCCCTCACTTATTTCCCGTGGCCTCAGCCCTTTCCACACTGCC  
CACCTCCAGCCTGCAGTATCAACCTCCTGCCCCAACCTGTCTGGGCCCCAGTTTGTCCAGCTCCCCATC  
TCTATCCAGAGCCAGTCCTTCAGGACATGGATGACCCCAAGAAGGGCCATCAGCTCCCTGACCATTGACA  
AGCTGCTTCTGGAGGAAGAGGAAAGCAACACGTACGAGCTCAACCACACCCTCTCCGTGGAGGGCTTT

**ACGCGT**ACGCGGCCGCTCGAGCAGAAACTCATCTCAGAAGAGGATCTGGCAGCAAATGATATCCTGGATT  
ACAAGGATGACGACGATAAGGTTTAA



[View online »](#)

**Protein Sequence:** >MR203298 protein sequence  
 Red=Cloning site Green=Tags(s)

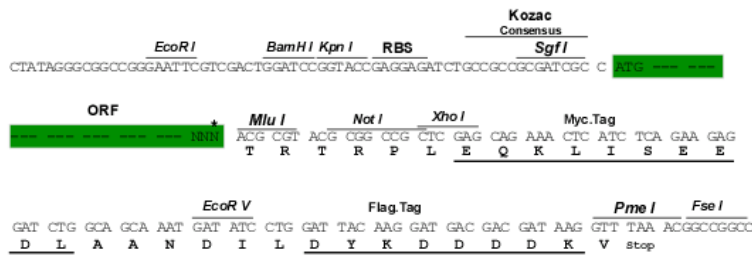
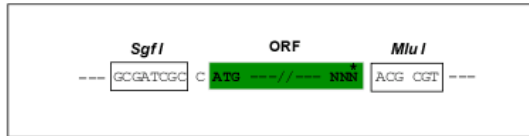
MLWQKSAAPEQAPAPRPHQGVVRVKEPVKELLRRKRKHTSVGAAGPPTAVVLPHQPLATYSTVGPSCLDMEVSASTVTEEGTLCAGWLSQPAPATLQPLAPWTPYTEYVSHEAVSCPYSTDMYVQPVCPSTYVVGPSVLYASPLITNVTNRSTATPAVGPQLEGPEHQAPLTYFPWPQPLSTLPTSSLQYQPPAPTLSGPQFVQLPISIPEPVLQDMDPRRAISSLTIDKLLLEEEESNTYELNHTLSVEGF

TRTRPLEQKLISEEDLAANDILDYKDDDDKV

**Restriction Sites:** SgfI-MluI

**Cloning Scheme:**

Cloning sites used for ORF Shuttling:



\* The last codon before the Stop codon of the ORF

**ACCN:** NM\_011136

**ORF Size:** 771 bp

**OTI Disclaimer:** The molecular sequence of this clone aligns with the gene accession number as a point of reference only. However, individual transcript sequences of the same gene can differ through naturally occurring variations (e.g. polymorphisms), each with its own valid existence. This clone is substantially in agreement with the reference, but a complete review of all prevailing variants is recommended prior to use. [More info](#)

**OTI Annotation:** This clone was engineered to express the complete ORF with an expression tag. Expression varies depending on the nature of the gene.

**Components:** The ORF clone is ion-exchange column purified and shipped in a 2D barcoded Matrix tube containing 10ug of transfection-ready, dried plasmid DNA (reconstitute with 100 ul of water).

**Reconstitution Method:**

1. Centrifuge at 5,000xg for 5min.
2. Carefully open the tube and add 100ul of sterile water to dissolve the DNA.
3. Close the tube and incubate for 10 minutes at room temperature.
4. Briefly vortex the tube and then do a quick spin (less than 5000xg) to concentrate the liquid at the bottom.
5. Store the suspended plasmid at -20°C. The DNA is stable for at least one year from date of shipping when stored at -20°C.

**RefSeq:** [NM\\_011136.1](#), [NM\\_011136.2](#), [NP\\_035266.1](#)

**RefSeq Size:** 2566 bp

**RefSeq ORF:** 771 bp

**Locus ID:** 18985

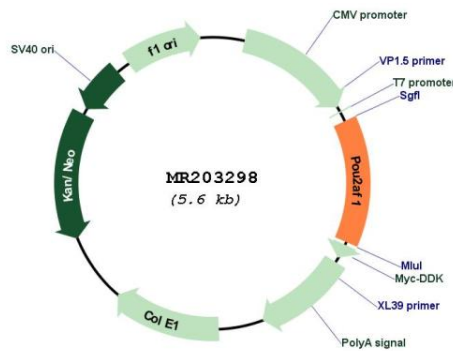
**UniProt ID:** [Q64693](#)

**Cytogenetics:** 9 A5.3

**MW:** 27.6 kDa

**Gene Summary:** Transcriptional coactivator that specifically associates with either OCT1 or OCT2. It boosts the OCT1 mediated promoter activity and to a lesser extent, that of OCT2. It has no intrinsic DNA-binding activity. It recognizes the POU domains of OCT1 and OCT2. It is essential for the response of B-cells to antigens and required for the formation of germinal centers. [UniProtKB/Swiss-Prot Function]

### Product images:



Circular map for MR203298