

Product datasheet for MR203280

Etfb (BC049237) Mouse Tagged ORF Clone

Product data:

Product Type:	Expression Plasmids
Product Name:	Etfb (BC049237) Mouse Tagged ORF Clone
Tag:	Myc-DDK
Symbol:	Etfb
Synonyms:	0610009I16Rik; 2810441H06Rik
Mammalian Cell Selection:	Neomycin
Vector:	pCMV6-Entry (PS100001)
E. coli Selection:	Kanamycin (25 ug/mL)
ORF Nucleotide Sequence:	>MR203280 ORF sequence Red=Cloning site Blue=ORF Green=Tags(s)

TTTTGTAATACGACTCACTATAGGGCGGCCGGAATTCGTCGACTGGATCCGGTACCGAGGAGATCTGCC
GCC**CGATCGCC**

ATGGCGGAGCTGCGCGCCTCGTGGCTGTCAAGAGGGTCATCGACTTCGCTGTGAAGATTCGGTAAAGC
CGGACAAGTCTGGAGTGGTCACTGATGGTGTGAAGCACTCCATGAACCCCTTCTGTGAGATTGCAGTGGA
AGAGGCTGTGCGGCTAAAGGAGAAGAACTGGTGAAGGAGATCATTGCCGTCAGCTGTGGCCCTCACAG
TGCCAGGAGACCATCCGAACTGCTCTGGCCATGGGTGCAGACAGAGGCATCCACGTGGAGATACAGGGG
CACAGGCAGAAAGCTTAGGCCCTGCAGTGGCCGGTCTGGCCAAGCTGGCTGAAAAGGAGAAAGT
GGACCTTTTGTTCCTGGGCAAGCAGGCTATTGATGATGACTGTAACCAGACAGGTGAGATGACAGCTGGA
CTTCTGGACTGGCCGAGGGTACATTCCCTCTCAGGTGACACTGGAGGGGACAAGGTAAGTGGAAAC
GGGAAATTGACGGGGTCTGGAGACCCTTCGCCTGAAGCTGCCCGCTGTGGTACTGCTGACCTAAGGCT
CAATGAGCCTCGCTATGCCACCCTGCCAACATCATGAAAGCCAAGAAGAAGATTGAAGTGGTCAAG
GCTGGAGACCTGGGCGTGGACCTGACCTCCAAGTCTCTGTGATCAGTGTGGAAGAGCCCTCAGCGCT
CAGCAGGAGTCAAGGTGGAGACCACAGAAGACCTGGTGGCCAAGCTGAAGGAGTGGGGCGGATC

ACGCGTACGCGGCCGCTCGAGCAGAACTCATCTCAGAAGAGGATCTGGCAGCAAATGATATCCTGGATT
ACAAGGATGACGACGATAAGGTTTAA



[View online »](#)

Protein Sequence: >MR203280 protein sequence
 Red=Cloning site Green=Tags(s)

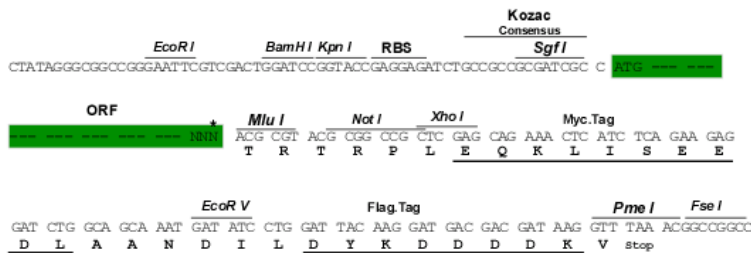
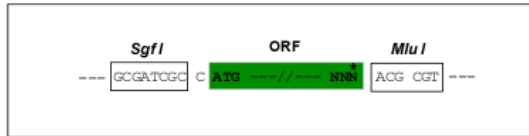
MAELRALVAVKRVIDFAVKIRVKPKSGVVTDGVKHSMPFCEIAVEEAVRLKEKKLVKEIIAVSCGPSQ
 CQETIRTALAMGADRGIHVEIPGAQAESLGPLQVARVLAKLAEKEKVDLLFLGKQAIDDDCNQTGQMTAG
 LLDWPQGTFFASQVTLEGDKVVEREIDGGLETLRKLPVVTADLRLNEPRYATLPNIMKAKKKKIEVVK
 AGDLGVDLTSKVSVISVEEPPQRSAGVKVETTEDLVAKLKEVGRI

TRTRPLEQKLISEEDLAANDILDYKDDDDKV

Restriction Sites: Sgfl-MluI

Cloning Scheme:

Cloning sites used for ORF Shuttling:



* The last codon before the Stop codon of the ORF

ACCN: BC049237

ORF Size: 765 bp

OTI Disclaimer: The molecular sequence of this clone aligns with the gene accession number as a point of reference only. However, individual transcript sequences of the same gene can differ through naturally occurring variations (e.g. polymorphisms), each with its own valid existence. This clone is substantially in agreement with the reference, but a complete review of all prevailing variants is recommended prior to use. [More info](#)

OTI Annotation: This clone was engineered to express the complete ORF with an expression tag. Expression varies depending on the nature of the gene.

Components: The ORF clone is ion-exchange column purified and shipped in a 2D barcoded Matrix tube containing 10ug of transfection-ready, dried plasmid DNA (reconstitute with 100 ul of water).

Reconstitution Method:

1. Centrifuge at 5,000xg for 5min.
2. Carefully open the tube and add 100ul of sterile water to dissolve the DNA.
3. Close the tube and incubate for 10 minutes at room temperature.
4. Briefly vortex the tube and then do a quick spin (less than 5000xg) to concentrate the liquid at the bottom.
5. Store the suspended plasmid at -20°C. The DNA is stable for at least one year from date of shipping when stored at -20°C.

RefSeq: [BC049237](#), [AAH49237](#)

RefSeq Size: 835 bp

RefSeq ORF: 767 bp

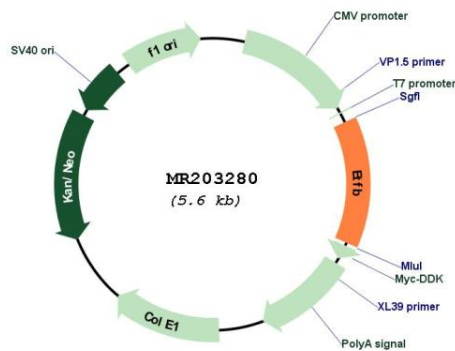
Locus ID: 110826

Cytogenetics: 7 28.25 cM

MW: 27.6 kDa

Gene Summary: Heterodimeric electron transfer flavoprotein that accepts electrons from several mitochondrial dehydrogenases, including acyl-CoA dehydrogenases, glutaryl-CoA and sarcosine dehydrogenase. It transfers the electrons to the main mitochondrial respiratory chain via ETF-ubiquinone oxidoreductase (By similarity). Required for normal mitochondrial fatty acid oxidation and normal amino acid metabolism (PubMed:25023281). ETFB binds an AMP molecule that probably has a purely structural role (By similarity).[UniProtKB/Swiss-Prot Function]

Product images:



Circular map for MR203280