

## Product datasheet for MR203278

### Snrpa1 (NM\_021336) Mouse Tagged ORF Clone

#### Product data:

Product Type:	Expression Plasmids
Product Name:	Snrpa1 (NM_021336) Mouse Tagged ORF Clone
Tag:	Myc-DDK
Symbol:	Snrpa1
Synonyms:	1500015N06Rik
Mammalian Cell Selection:	Neomycin
Vector:	pCMV6-Entry (PS100001)
E. coli Selection:	Kanamycin (25 ug/mL)
ORF Nucleotide Sequence:	>MR203278 ORF sequence Red=Cloning site Blue=ORF Green=Tags(s)

TTTTGTAATACGACTCACTATAGGGCGGCCGGGAATTCGTCGACTGGATCCGGTACCGAGGAGATCTGCC  
GCC**CGATCGCC**

ATGGTGAAGCTCACGGCGGAGCTGATCGAGCAGGCGGCGCAGTACACAAATGCTGTGCGGGACCGTGAAC  
TGGACCTCCGGGGATATAAAATTCGGTTATTGAGAATCTGGGTGCCACCTTAGACCAGTTTGATGCTAT  
TGATTTTCTGACAATGAGATCCGAAACTGGATGGTTCCCTTTGTCGAGAAGACTGAAAACATTATTA  
GTGAACAACAACAGAATTTGCCGTATAGGTGAGGGACTTGACCAGGCTCTCCCTGTCTGACAGAGCTCA  
TCCTCACCAACAACAGTCTAGTGAAGTGGGTGATCTGGACCCGTTGGCATCTCTCAAATCACTGACATA  
TCTAAGCATCCTAAGAAACCCTGTAACCAATAAGAAGCATTATCGACTTTATGTGATTTATAAAGTTCCA  
CAAGTCAGAGTACTGGACTTTCAGAAAGTGAACTCAAAGAGCGTCAGGAAGCAGAGAAAATGTTCAAGG  
GCAAACGGGGTGACAGCTTGCAAAGGATATTGCCAGGAGAAGCAAACTTTTAAATCCAGGTGCTGGTTT  
GCCAACTGACAAAAGAAAGCGGGCCATCTGCAGGGGATGTGGAAGCAATCAAGAAATGCCATCGCAAAC  
GCGTCGACGCTGGCTGAGGTTGAGAGGCTGAAGGGCTTGCTGCAGTCGGGCCAGATACCTGGCAGAGAGC  
GCAGATCAGGGCCGAGTGATGAGGGTGAAGAAGAGATAGAAGACGACACAGTCACAAATGGGTCC

AG**CGGACCG**ACGCGTACGCGGCCGCTCGAGCAGAACTCATCTCAGAAGAGGATCTGGCAGCAAATGATATCC  
TGGATTACAAGGATGACGACGATAAGGTTTAA



[View online »](#)

**Protein Sequence:** >MR203278 protein sequence  
 Red=Cloning site Green=Tags(s)

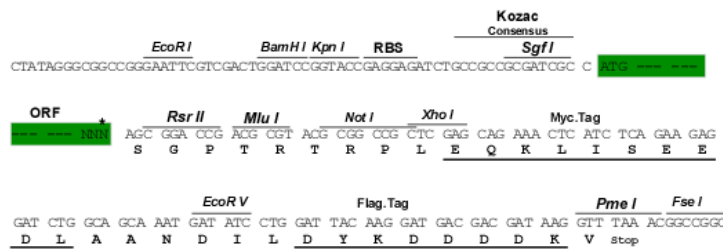
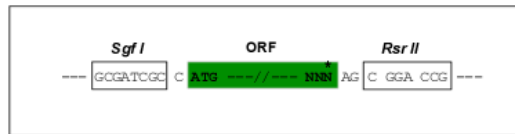
MVKLTAE LIEQAAQYTNVDRDLRGLYKIPV IENLGATLDQFDAIDFSDNEIRKLDGFPLSRRLK TLL  
 VNNNRICRIGEGLDQALPCLTELILTNNSLVELGDLPLASLSTYLSILRNPVTNKKHYRLYVIYKVP  
 QVRVLDQKVKLKERQEA EKMFKGKRGALAKDIARRSKTFNPGAGLPTDKKKGGPSAGDVEAIKNAIAN  
 ASTLAEVERLKGLLQSGQIPGRERRSGPSDEGEEIEEDDTVTNGS

SGPTRTRPLEQKLI SEEDLAANDILDYKDDDDKV

**Restriction Sites:** SgfI-RsrII

**Cloning Scheme:**

Cloning sites used for ORF Shuttling:



\* The last codon before the Stop codon of the ORF

**ACCN:** NM\_021336

**ORF Size:** 768 bp

**OTI Disclaimer:** The molecular sequence of this clone aligns with the gene accession number as a point of reference only. However, individual transcript sequences of the same gene can differ through naturally occurring variations (e.g. polymorphisms), each with its own valid existence. This clone is substantially in agreement with the reference, but a complete review of all prevailing variants is recommended prior to use. [More info](#)

**OTI Annotation:** This clone was engineered to express the complete ORF with an expression tag. Expression varies depending on the nature of the gene.

**Components:** The ORF clone is ion-exchange column purified and shipped in a 2D barcoded Matrix tube containing 10ug of transfection-ready, dried plasmid DNA (reconstitute with 100 ul of water).

**Reconstitution Method:**

1. Centrifuge at 5,000xg for 5min.
2. Carefully open the tube and add 100ul of sterile water to dissolve the DNA.
3. Close the tube and incubate for 10 minutes at room temperature.
4. Briefly vortex the tube and then do a quick spin (less than 5000xg) to concentrate the liquid at the bottom.
5. Store the suspended plasmid at -20°C. The DNA is stable for at least one year from date of shipping when stored at -20°C.

**RefSeq:** [NM\\_021336.3](#), [NP\\_067311.3](#)

**RefSeq Size:** 1250 bp

**RefSeq ORF:** 768 bp

**Locus ID:** 68981

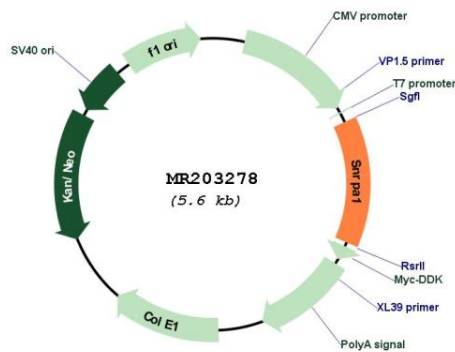
**UniProt ID:** [P57784](#)

**Cytogenetics:** 7 C

**MW:** 28.3 kDa

**Gene Summary:** Involved in pre-mRNA splicing as component of the spliceosome. Associated with sn-RNP U2, where it contributes to the binding of stem loop IV of U2 snRNA.[UniProtKB/Swiss-Prot Function]

**Product images:**



Circular map for MR203278