

Product datasheet for MR203275

Dlx1 (NM_010053) Mouse Tagged ORF Clone

Product data:

| | |
|---------------------------|---|
| Product Type: | Expression Plasmids |
| Product Name: | Dlx1 (NM_010053) Mouse Tagged ORF Clone |
| Tag: | Myc-DDK |
| Symbol: | Dlx1 |
| Synonyms: | Dl; Dlx; Dlx-; Dlx-1 |
| Mammalian Cell Selection: | Neomycin |
| Vector: | pCMV6-Entry (PS100001) |
| E. coli Selection: | Kanamycin (25 ug/mL) |
| ORF Nucleotide Sequence: | >MR203275 ORF sequence Red=Cloning site Blue=ORF Green=Tags(s) |

TTTTGTAATACGACTCACTATAGGGCGCCGGGAATTCGTCGACTGGATCCGGTACCGAGGAGATCTGCC
GCC**CGATCGCC**

ATGACCATGACCACCATGCCAGAAAGTCTCAACAGCCCCGTGTCGGGCAAGGCTGTGTTTATGGAGTTTG
GGCCGCCCAACCAGCAAATGTCTCCTTCTCCCATGTCCCACGGGCACTACTCCATGCACTGTTTACTC
GGCGGGCCATTTCGAGCCCGACGGTGCCTACAGTTCGGCCTCATCCTTCTCCGACCGCTGGGCTACCC
TAGTCAACTCGGTCAGCAGCCACGCGTCCAGCCCTACATCAGTTCGTCAGTCTACCCCGCAGCG
CCAGCCTCGCCAGAGCCGCCTGGAGGACCCAGGGCGGACTCCGAGAAGAGTACGGTGGTGAAGGCGG
CGAGGTGCGCTTTAACGGCAAAGGGAAAAAGATCCGTAACCCAGGACAATTTATCCAGTTTGCAGTTG
CAGGCTTTGAACCGGAGGTTCCAACAACTCAGTACTTAGCTCTGCCTGAGAGGGCGGAGCTGGCGGCT
CCTTGGGACTCACACAGACGCAGGTCAAGATATGGTCCAGAACAACGCTCCAAGTTCAAGAAGCTGAT
GAAGCAAGGCGGGCAGCTCTGGAGGGCAGCGCTGGCGAACGGCAGAGCCTTGTCTGCCGGCTCCCCA
CCGGTACCACCGGCTGGAATCCGAACCTCTCATCTGGGAAGGGCTCCGGCAGCAGCGCTGGCTCCTACG
TCCCAGCTATACATCATGGTATCCCTCAGCGCACCAAGAAGCTATGCAGCAGCTCAACTGATG

AG**CGGACCG**ACGCGTACGCGGCCGCTCGAGCAGAACTCATCTCAGAAGAGGATCTGGCAGCAAATGATATCC
TGGATTACAAGGATGACGACGATAAGGTTTAA



[View online »](#)

Protein Sequence: >MR203275 protein sequence
Red=Cloning site Green=Tags(s)

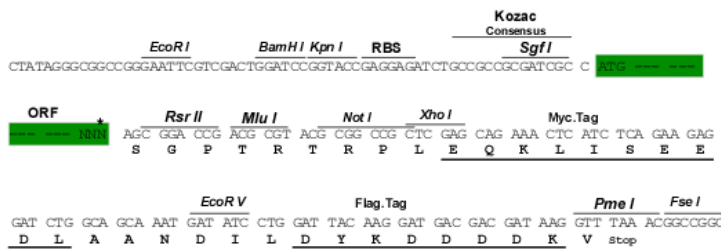
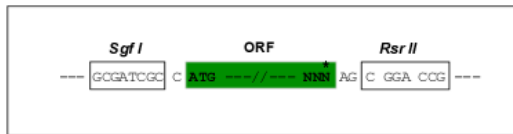
MTMTTPELNSPVSGKAVFMEFGPPNQMQSPSPMSHGHYSMHCLHSAGHSQPDGAYSSASSFSRPLGYP
 YVNSVSSHASSPYISSVQSYPGSASLAQSRLDPGADSEKSTVVEGGEVRFNGKGGKIRKPRTIYSSLQL
 QALNRRFQQTQYLALPERAELAASLGLTQTQVKIWFQNKRSKFKKLMKQGGAALGALSALANRALSAGSP
 PVPPGWNPNSSSGKSGSSAGSYVPYTSWYPSAHQEAMQQPQLM

SGPTRTRPLEQKLI SEEDLAANDILDYKDDDDKV

Restriction Sites: SgfI-RsrII

Cloning Scheme:

Cloning sites used for ORF Shuttling:



* The last codon before the Stop codon of the ORF

ACCN: NM_010053

ORF Size: 768 bp

OTI Disclaimer: The molecular sequence of this clone aligns with the gene accession number as a point of reference only. However, individual transcript sequences of the same gene can differ through naturally occurring variations (e.g. polymorphisms), each with its own valid existence. This clone is substantially in agreement with the reference, but a complete review of all prevailing variants is recommended prior to use. [More info](#)

OTI Annotation: This clone was engineered to express the complete ORF with an expression tag. Expression varies depending on the nature of the gene.

Components: The ORF clone is ion-exchange column purified and shipped in a 2D barcoded Matrix tube containing 10ug of transfection-ready, dried plasmid DNA (reconstitute with 100 ul of water).

Reconstitution Method:

1. Centrifuge at 5,000xg for 5min.
2. Carefully open the tube and add 100ul of sterile water to dissolve the DNA.
3. Close the tube and incubate for 10 minutes at room temperature.
4. Briefly vortex the tube and then do a quick spin (less than 5000xg) to concentrate the liquid at the bottom.
5. Store the suspended plasmid at -20°C. The DNA is stable for at least one year from date of shipping when stored at -20°C.

RefSeq: [NM_010053.2](#)

RefSeq Size: 2779 bp

RefSeq ORF: 768 bp

Locus ID: 13390

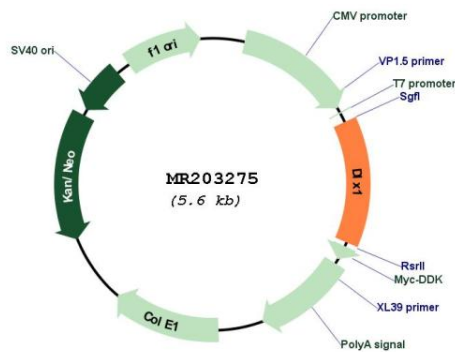
UniProt ID: [Q64317](#)

Cytogenetics: 2 42.61 cM

MW: 27.3 kDa

Gene Summary: The protein encoded by this gene is a homeobox-containing transcription factor involved in development. The encoded protein plays a role in craniofacial patterning, as well as in bone, placenta, and sensory organ formation. [provided by RefSeq, Aug 2015]

Product images:



Circular map for MR203275