

## Product datasheet for MR203248L3

### Fam192a (NM\_028221) Mouse Tagged Lenti ORF Clone

#### Product data:

Product Type:	Expression Plasmids
Product Name:	Fam192a (NM_028221) Mouse Tagged Lenti ORF Clone
Tag:	Myc-DDK
Symbol:	Fam192a
Synonyms:	1700001O11Rik; 2310065K24Rik; AI596259; Nip30
Mammalian Cell Selection:	Puromycin
Vector:	pLenti-C-Myc-DDK-P2A-Puro (PS100092)
E. coli Selection:	Chloramphenicol (34 ug/mL)
ORF Nucleotide Sequence:	The ORF insert of this clone is exactly the same as(MR203248).
Restriction Sites:	SgfI-MluI
Cloning Scheme:	

Cloning sites used for ORF Shuttling:



\* The last codon before the Stop codon of the ORF.

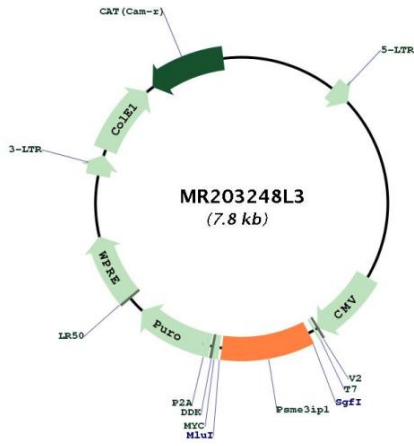
ACCN:	NM_028221
ORF Size:	765 bp



[View online »](#)

<b>OTI Disclaimer:</b>	The molecular sequence of this clone aligns with the gene accession number as a point of reference only. However, individual transcript sequences of the same gene can differ through naturally occurring variations (e.g. polymorphisms), each with its own valid existence. This clone is substantially in agreement with the reference, but a complete review of all prevailing variants is recommended prior to use. <a href="#">More info</a>
<b>OTI Annotation:</b>	This clone was engineered to express the complete ORF with an expression tag. Expression varies depending on the nature of the gene.
<b>Components:</b>	The ORF clone is ion-exchange column purified and shipped in a 2D barcoded Matrix tube containing 10ug of transfection-ready, dried plasmid DNA (reconstitute with 100 ul of water).
<b>Reconstitution Method:</b>	<ol style="list-style-type: none"><li>1. Centrifuge at 5,000xg for 5min.</li><li>2. Carefully open the tube and add 100ul of sterile water to dissolve the DNA.</li><li>3. Close the tube and incubate for 10 minutes at room temperature.</li><li>4. Briefly vortex the tube and then do a quick spin (less than 5000xg) to concentrate the liquid at the bottom.</li><li>5. Store the suspended plasmid at -20°C. The DNA is stable for at least one year from date of shipping when stored at -20°C.</li></ol>
<b>RefSeq:</b>	<a href="#">NM_028221.4</a>
<b>RefSeq Size:</b>	1812 bp
<b>RefSeq ORF:</b>	765 bp
<b>Locus ID:</b>	102122
<b>UniProt ID:</b>	<a href="#">Q91WE2</a>
<b>Cytogenetics:</b>	8 C5
<b>Gene Summary:</b>	Promotes the association of the proteasome activator complex subunit PSME3 with the 20S proteasome and regulates its activity. Inhibits PSME3-mediated degradation of some proteasome substrates, probably by affecting their diffusion rate into the catalytic chamber of the proteasome. Also inhibits the interaction of PSME3 with COIL, inhibits accumulation of PSME3 in Cajal bodies and positively regulates the number of Cajal bodies in the nucleus. [UniProtKB/Swiss-Prot Function]

Product images:



Circular map for MR203248L3