

Product datasheet for **MR203244**

Tspan11 (NM_026743) Mouse Tagged ORF Clone

Product data:

Product Type:	Expression Plasmids
Product Name:	Tspan11 (NM_026743) Mouse Tagged ORF Clone
Tag:	Myc-DDK
Symbol:	Tspan11
Synonyms:	1110014F12Rik; AU067806
Mammalian Cell Selection:	Neomycin
Vector:	pCMV6-Entry (PS100001)
E. coli Selection:	Kanamycin (25 ug/mL)
ORF Nucleotide Sequence:	>MR203244 ORF sequence Red=Cloning site Blue=ORF Green=Tags(s)

TTTTGTAATACGACTCACTATAGGGCGCCGGGAATTCGTCGACTGGATCCGGTACCGAGGAGATCTGCC
GCC**CGATCGCC**

ATGGCGCACTGCAAGACAGAGCAGGATGACTGGCTGCTGGCCACCTGAAGTACCTGCTTTCATCTTCA
ACTTCTTCTTCTGGGTAGGTGGGCAGCCGTCATGGCCGTGGGTATCTGGACTGGTGGAGAAGAGCGG
TTACCTCAGCATCTTGGCCTCCAGCACGTTTCGCTGCCTACATCCTCATTTTCGTTGGTGGTCTT
GTCATGACAACTGGCTTCTGGCTTTGGGGCCATCATCCGGGAGCAGAAGAGCTGCCTCCTCCACATATT
TCTGCCTGCTGCTGGTCATCTTCTTGTGGAGCTGGTGGCAGGGTCTGGCACATGTGTACTACCAGAG
GCTGAGTGACGAGCTGAAGTGGCACCTGAACAGCACCTGACTGAGCACTACGGACAGCCCAGGGCCGCA
GAGATCACAGCCTCGGTGGACCGCTGCAGCAGGACTTCAAATGCTGTGGCAGTAAACAGCTCAGCCGACT
GGCAGCACAGCGCTACATCTTGTCTCAGGAAGCCCTGGGTGCCAGGTGCCCGACAGCTGCTGCAAGAC
AGTGGTGGCCGCTGTGGTCAGCGAGCCACCCCTCCAACATCTACAAGGTAGAGGGAGGCTGTATGGCC
AAGCTGGAACAGTTCTGTGGCTGACCACCTGCTGCTCATGGGAGCGGTGGGTATTGGGGTAGCCTGTCTTC
AGATCTGTGGGATGGTCTCACCTGCTGCTTGCACCGAAGGCTCCAGCAACAATTTAT

ACGCGTACGCGGCCGCTCGAGCAGAACTCATCTCAGAAGAGGATCTGGCAGCAAATGATATCCTGGATT
ACAAGGATGACGACGATAAGGTTTAA



[View online »](#)

Protein Sequence: >MR203244 protein sequence
 Red=Cloning site Green=Tags(s)

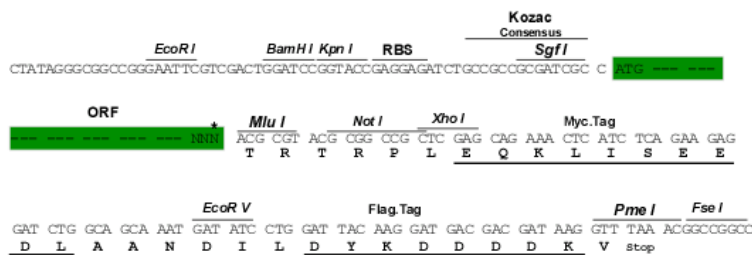
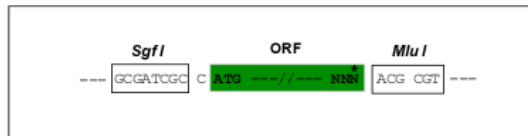
MAHCKTEQDDWLLAHLKYLLFIFNFFFVWGAAVMAVGIWTLVEKSGYLSILASSTFAASAYILIFVGG
 VMTTGLGFGAI IREKSKSLSTYFCLLLVIFLVELVAGVLAHVYQRLSDELKWHLNLSTL TEHYGQPRAA
 EITASVDRLQQDFKCCGSNSSADWQHSAYILSQEALGRQVPDSCCKTVVARCGQRAHPSNIYKVEGGCMA
 KLEQFVADHLLL MGAVGIGVACLQICGMVLTCLLHRRLLQQQFY

TRTRPLEQKLISEEDLAANDILDYKDDDDKV

Restriction Sites: SgfI-MluI

Cloning Scheme:

Cloning sites used for ORF Shuttling:



* The last codon before the Stop codon of the ORF

ACCN: NM_026743

ORF Size: 762 bp

OTI Disclaimer: The molecular sequence of this clone aligns with the gene accession number as a point of reference only. However, individual transcript sequences of the same gene can differ through naturally occurring variations (e.g. polymorphisms), each with its own valid existence. This clone is substantially in agreement with the reference, but a complete review of all prevailing variants is recommended prior to use. [More info](#)

OTI Annotation: This clone was engineered to express the complete ORF with an expression tag. Expression varies depending on the nature of the gene.

Components: The ORF clone is ion-exchange column purified and shipped in a 2D barcoded Matrix tube containing 10ug of transfection-ready, dried plasmid DNA (reconstitute with 100 ul of water).

Reconstitution Method:

1. Centrifuge at 5,000xg for 5min.
2. Carefully open the tube and add 100ul of sterile water to dissolve the DNA.
3. Close the tube and incubate for 10 minutes at room temperature.
4. Briefly vortex the tube and then do a quick spin (less than 5000xg) to concentrate the liquid at the bottom.
5. Store the suspended plasmid at -20°C. The DNA is stable for at least one year from date of shipping when stored at -20°C.

RefSeq: [NM_026743.3](#), [NP_081019.1](#)

RefSeq Size: 4209 bp

RefSeq ORF: 762 bp

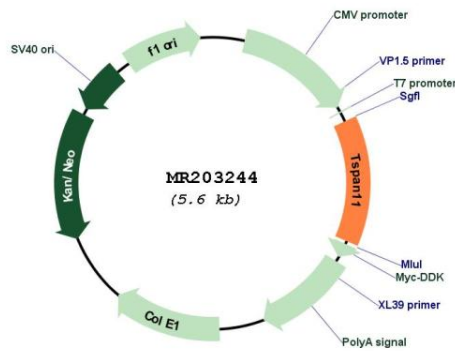
Locus ID: 68498

UniProt ID: [Q9D1D1](#)

Cytogenetics: 6 F3

MW: 28.1 kDa

Product images:



Circular map for MR203244