

Product datasheet for **MR203236**

Cd151 (NM_009842) Mouse Tagged ORF Clone

Product data:

Product Type:	Expression Plasmids
Product Name:	Cd151 (NM_009842) Mouse Tagged ORF Clone
Tag:	Myc-DDK
Symbol:	Cd151
Synonyms:	PETA-3; SFA-1; Tspan24
Mammalian Cell Selection:	Neomycin
Vector:	pCMV6-Entry (PS100001)
E. coli Selection:	Kanamycin (25 ug/mL)
ORF Nucleotide Sequence:	>MR203236 ORF sequence Red=Cloning site Blue=ORF Green=Tags(s)

TTTTGTAATACGACTCACTATAGGGCGGCCGGAATTCGTCGACTGGATCCGGTACCGAGGAGATCTGCC
GCC**CGATCGCC**

ATGGGTGAATTCATGAGAAGAAGGCAACATGTGGCACAGTCTGCCTCAAGTACCTGCTCTTCACCTACA
ACTGCTGCTTCTGGCTGGCCGGCCTGGCTGTGCATGGCAGTGGGCATCTGGACTGGCCCTCAAGAGTGA
CTACATTAGTCTGCTGGCCTCAAGCACTTACCTAGCCACGGCCTACATCTTAGTGGTGGCTGGTGTGTT
GTCATGGTGACTGGAGTCTGGCTGCTGTGCCACTTCAAGGAGCGACGGAACCTGTTACGCTTGTACT
TCATCCTGCTCCTCATCATCTTCTCCTGGAGATCATTGCTGGCATCCTGGCCTATGCTATTATCAGCA
GCTGAACACAGAGCTCAAGGAGAATCTGAAGGACACCATGGTCAAGAGATACCACCAGTCAGGCCACGAG
GGTGTGACCAGTGTGTCGACAAGCTGCAGCAAGAGTTCCACTGTTGTGGCAGCAACAACCTCAAGACT
GGCAAGACAGCGAGTGGATCCACTCTGGTGAGGCAGACAGCCGCGTGGTTCCTGACAGCTGCTGTAAGAC
TATGGTAGCTGGCTGTGGTAAGCGGGACCATGCCTCCAACATCTATAAAGTGGAGGGTGGCTGTACT
AAGCTGGAGACCTTATTAGGAGCACCTGCGGGTCATTGGGGCGGTGGGCATTGGCATCGCCTGTGTGC
AGGTCTTCGGCATGATCTTACCTGCTGTTGTACCGAAGCCTCAAGCTGGAACACTAC

ACGCGTACGCGGCCGCTCGAGCAGAACTCATCTCAGAAGAGGATCTGGCAGCAAATGATATCCTGGATT
ACAAGGATGACGACGATAAGGTTTAA



[View online »](#)

Protein Sequence: >MR203236 protein sequence
Red=Cloning site Green=Tags(s)

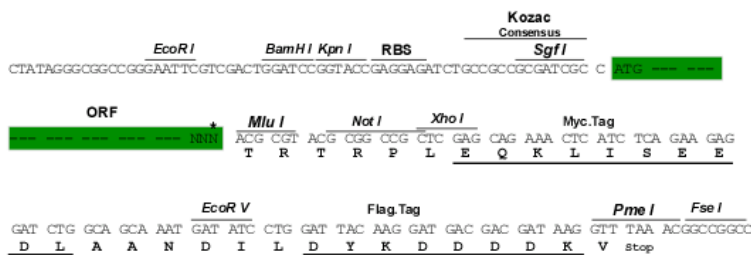
MGEFNKKATCGTVCLKYLLFTYNCCFWLAGLAVMAVGIWTLALKSDYISLLASSTYLATAYILVVAGVV
 VMVTGVLGCCATFKERRNLLRLYFILLLIIFLLEIIAGILAYVYVYQQLNTELKENLKDVTMKRYHQSGHE
 GVTSADVLDLQEFHCCGSNNSQDWQDSEWIHSGEADSRVVPDSCCKTMVAGCGKRDRHASNIYKVEGGCIT
 KLETFIQEHLRVIGAVGIGIACVQVFGMIFTCCLYRSLKLEHY

TRTRPLEQKLISEEDLAANDILDYKDDDDKV

Restriction Sites: SgfI-MluI

Cloning Scheme:

Cloning sites used for ORF Shuttling:



* The last codon before the Stop codon of the ORF

ACCN: NM_009842

ORF Size: 762 bp

OTI Disclaimer: The molecular sequence of this clone aligns with the gene accession number as a point of reference only. However, individual transcript sequences of the same gene can differ through naturally occurring variations (e.g. polymorphisms), each with its own valid existence. This clone is substantially in agreement with the reference, but a complete review of all prevailing variants is recommended prior to use. [More info](#)

OTI Annotation: This clone was engineered to express the complete ORF with an expression tag. Expression varies depending on the nature of the gene.

Components: The ORF clone is ion-exchange column purified and shipped in a 2D barcoded Matrix tube containing 10ug of transfection-ready, dried plasmid DNA (reconstitute with 100 ul of water).

Reconstitution Method:

1. Centrifuge at 5,000xg for 5min.
2. Carefully open the tube and add 100ul of sterile water to dissolve the DNA.
3. Close the tube and incubate for 10 minutes at room temperature.
4. Briefly vortex the tube and then do a quick spin (less than 5000xg) to concentrate the liquid at the bottom.
5. Store the suspended plasmid at -20°C. The DNA is stable for at least one year from date of shipping when stored at -20°C.

RefSeq: [NM_009842.1](#), [NM_009842.2](#), [NM_009842.3](#), [NP_033972.1](#)

RefSeq Size: 1909 bp

RefSeq ORF: 762 bp

Locus ID: 12476

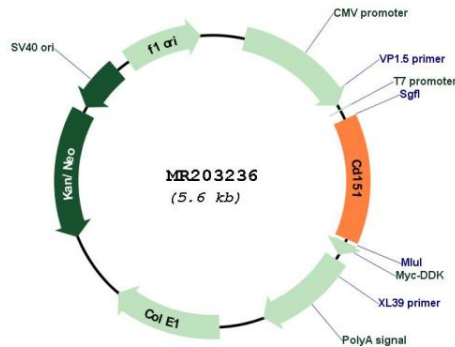
UniProt ID: [O35566](#)

Cytogenetics: 7 86.82 cM

MW: 28.2 kDa

Gene Summary: Essential for the proper assembly of the glomerular and tubular basement membranes in kidney.[UniProtKB/Swiss-Prot Function]

Product images:



Circular map for MR203236