

## Product datasheet for MR203216L3

### Btg3 (NM\_009770) Mouse Tagged Lenti ORF Clone

#### Product data:

Product Type:	Expression Plasmids
Product Name:	Btg3 (NM_009770) Mouse Tagged Lenti ORF Clone
Tag:	Myc-DDK
Symbol:	Btg3
Synonyms:	ANA; tob; tob5
Mammalian Cell Selection:	Puromycin
Vector:	pLenti-C-Myc-DDK-P2A-Puro (PS100092)
E. coli Selection:	Chloramphenicol (34 ug/mL)
ORF Nucleotide Sequence:	The ORF insert of this clone is exactly the same as(MR203216).
Restriction Sites:	SgfI-MluI
Cloning Scheme:	

Cloning sites used for ORF Shuttling:



\* The last codon before the Stop codon of the ORF.

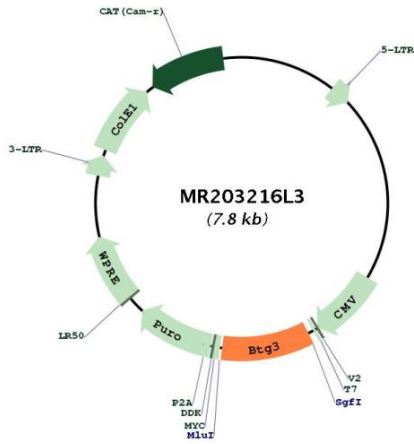
ACCN:	NM_009770
ORF Size:	759 bp



[View online »](#)

<b>OTI Disclaimer:</b>	The molecular sequence of this clone aligns with the gene accession number as a point of reference only. However, individual transcript sequences of the same gene can differ through naturally occurring variations (e.g. polymorphisms), each with its own valid existence. This clone is substantially in agreement with the reference, but a complete review of all prevailing variants is recommended prior to use. <a href="#">More info</a>
<b>OTI Annotation:</b>	This clone was engineered to express the complete ORF with an expression tag. Expression varies depending on the nature of the gene.
<b>Components:</b>	The ORF clone is ion-exchange column purified and shipped in a 2D barcoded Matrix tube containing 10ug of transfection-ready, dried plasmid DNA (reconstitute with 100 ul of water).
<b>Reconstitution Method:</b>	<ol style="list-style-type: none"><li>1. Centrifuge at 5,000xg for 5min.</li><li>2. Carefully open the tube and add 100ul of sterile water to dissolve the DNA.</li><li>3. Close the tube and incubate for 10 minutes at room temperature.</li><li>4. Briefly vortex the tube and then do a quick spin (less than 5000xg) to concentrate the liquid at the bottom.</li><li>5. Store the suspended plasmid at -20°C. The DNA is stable for at least one year from date of shipping when stored at -20°C.</li></ol>
<b>RefSeq:</b>	<a href="#">NM_009770.2</a> , <a href="#">NP_033900.1</a>
<b>RefSeq Size:</b>	1414 bp
<b>RefSeq ORF:</b>	759 bp
<b>Locus ID:</b>	12228
<b>UniProt ID:</b>	<a href="#">P50615</a>
<b>Cytogenetics:</b>	16 C3.1
<b>Gene Summary:</b>	<p>This gene encodes B cell translocation gene 3, a member of the BTG gene family. This family is defined by a conserved N-terminal domain, known to bind transcription factors, and a less conserved C-terminal domain. This protein is thought to have anti-proliferative properties, and may be involved in regulating the G1-S transition to suppress cell cycle progression. Mice deficient for this gene display an increased incidence of lung cancers, and many human lung cancer cells exhibit decreased levels of B cell translocation gene 3. Alternate splicing results in multiple transcript variants. A pseudogene of this gene is found on chromosome 17. [provided by RefSeq, Jul 2014]</p>

Product images:



Circular map for MR203216L3