

Product datasheet for MR203189

Pgap2 (NM_145583) Mouse Tagged ORF Clone

Product data:

Product Type:	Expression Plasmids
Product Name:	Pgap2 (NM_145583) Mouse Tagged ORF Clone
Tag:	Myc-DDK
Symbol:	Pgap2
Synonyms:	1810006G21Rik; C76649; Frag1
Mammalian Cell Selection:	Neomycin
Vector:	pCMV6-Entry (PS100001)
E. coli Selection:	Kanamycin (25 ug/mL)
ORF Nucleotide Sequence:	>MR203189 ORF sequence Red=Cloning site Blue=ORF Green=Tags(s)

TTTTGTAATACGACTCACTATAGGGCGGCCGGAATTCGTCGACTGGATCCGGTACCGAGGAGATCTGCC
GCC**CGATCGCC**

ATGTACCAGGTCCCCTGACATTGGACCGGGATGGGACCCTAGTCCGGCTCCGCTTCACTATGGTGGCCC
TGATCACTGTCTGCTGTCCACTTGTGCGCTTCTTCTTCTGCATCCTGTGGTCCCTGCTCTTTCACCTCAA
GGAGACAACATCTACACACTGTGGGTGCCAATTACCTGCCATCAGTGAGCTCCGCCATTGGTGGGGAG
GTCCCCAACGCTACGTGTGGCGTTTCTGCATTGGCTGCACTCGGCACCCCGCTTCTTGACAGCCTTCG
CCTATTGGAACCACTACCTCAGCTGTGCGTCTCCATGTCCGGTTACCGCTTCTGCGCATTAACTT
CAGTCTCAATGTGGTGGAGAACCCTCGCGCTGCTCGTGCTCACCTACGTCTCCTCCTCCGAGGACTTCACC
ATCCACGAAAATGCTTTCATTGTGTTTATCGCGGCATCCCTCGGTTACATGCTCCTCACCTGCATTCTCT
GGCGGCTGACCAAGAAGCACACAGATCGCAAGTCTACAGCTGGAAACAGCGGCTCTTTCGTCACTCACTT
CATCTCCTTCTTCTCGGCGCTGGCTGTCTACTTCCGGCACAACATGTATTGTGAGGCTGGAGTGTATACC
ATCTTTGCCATCCTGGAGTACACTGTTGCTTAACCAACATGGCGTTCACATGACAGCCTGGTGGGACT
TCGGGAACAAAGAGCTGCTAATAACCTCTCAGCCTGAGGAAAAGAGATTC

ACGCGTACGCGGCCGCTCGAGCAGAACTCATCTCAGAAGAGGATCTGGCAGCAAATGATATCCTGGATT
ACAAGGATGACGACGATAAGGTTTAA



[View online »](#)

Protein Sequence: >MR203189 protein sequence
 Red=Cloning site Green=Tags(s)

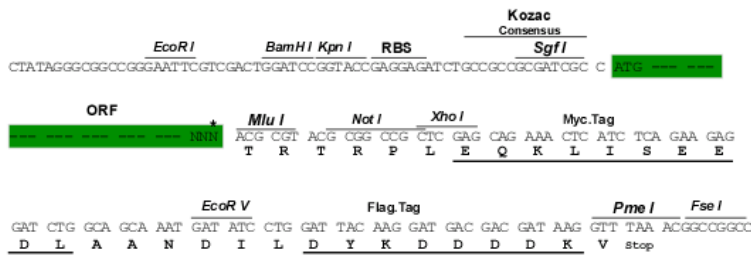
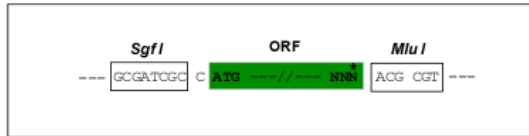
MYQVPLTLDRDGLVRLRFTMVALITVCCPLVAFFFCILWSLLFHFKETTSTHCGVPNYLPSVSSAIGGE
 VPQRYVWRFCIGLHSAPRFLTAFAYWNHYLSCASPCPGYRLLCRINFSLNVVENLALLVLTYVSSSEDFT
 IHENAFIVFIAASLGYMLLTICILWRLTKKHTDRKSYSWKQRLFVINIFISFFSALAVYFRHNMYCEAGVYT
 IFAILEYTVVLTNMAFHMTAWWDFGNKELLITSQPPEEKRF

TRTRPLEQKLISEEDLAANDILDYKDDDDKV

Restriction Sites: SgfI-MluI

Cloning Scheme:

Cloning sites used for ORF Shuttling:



* The last codon before the Stop codon of the ORF

ACCN: NM_145583

ORF Size: 753 bp

OTI Disclaimer: The molecular sequence of this clone aligns with the gene accession number as a point of reference only. However, individual transcript sequences of the same gene can differ through naturally occurring variations (e.g. polymorphisms), each with its own valid existence. This clone is substantially in agreement with the reference, but a complete review of all prevailing variants is recommended prior to use. [More info](#)

OTI Annotation: This clone was engineered to express the complete ORF with an expression tag. Expression varies depending on the nature of the gene.

Components: The ORF clone is ion-exchange column purified and shipped in a 2D barcoded Matrix tube containing 10ug of transfection-ready, dried plasmid DNA (reconstitute with 100 ul of water).

Reconstitution Method:

1. Centrifuge at 5,000xg for 5min.
2. Carefully open the tube and add 100ul of sterile water to dissolve the DNA.
3. Close the tube and incubate for 10 minutes at room temperature.
4. Briefly vortex the tube and then do a quick spin (less than 5000xg) to concentrate the liquid at the bottom.
5. Store the suspended plasmid at -20°C. The DNA is stable for at least one year from date of shipping when stored at -20°C.

RefSeq: [NM_145583.3](#)

RefSeq Size: 2048 bp

RefSeq ORF: 753 bp

Locus ID: 233575

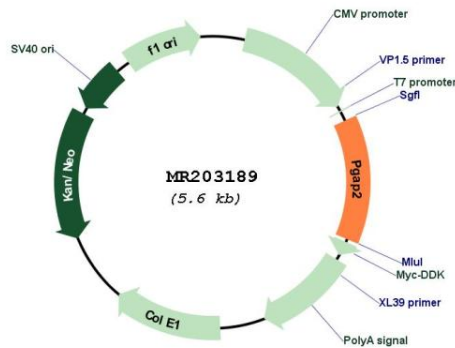
UniProt ID: [Q3TQR0](#)

Cytogenetics: 7 E2

MW: 29 kDa

Gene Summary: Involved in the lipid remodeling steps of GPI-anchor maturation. Required for stable expression of GPI-anchored proteins at the cell surface (By similarity).[UniProtKB/Swiss-Prot Function]

Product images:



Circular map for MR203189