

Product datasheet for MR203187

Nars2 (BC030041) Mouse Tagged ORF Clone

Product data:

Product Type:	Expression Plasmids
Product Name:	Nars2 (BC030041) Mouse Tagged ORF Clone
Tag:	Myc-DDK
Symbol:	Nars2
Synonyms:	MGC41336
Mammalian Cell Selection:	Neomycin
Vector:	pCMV6-Entry (PS100001)
E. coli Selection:	Kanamycin (25 ug/mL)
ORF Nucleotide Sequence:	>MR203187 ORF sequence Red=Cloning site Blue=ORF Green=Tags(s)

TTTTGTAATACGACTCACTATAGGGCGGCCGGAATTCGTCGACTGGATCCGGTACCGAGGAGATCTGCC
GCC**CGATCGCC**

ATGTCAGGAGCTTTTACCCAAGTATTTACCTTTGGTCCAACATTCGAGCTGAGAATTCTCAGAGCCGGA
GACACCTGGCTGAATTTTATATGGTTGAAGCGGAGATTTCTTTGTTGAAAGCCTTCAGGATCTCATGCA
GGTCATGGAGGAACCTTCAAGGCGACCACGGAGATGGTTCTCTCACACTGTCCTGAAGATGTTGAATTG
TGTCACCAGTTCATAGCTGCTGGCCAGAAGGGCAGACTAGAACATATGCTAAAAACAACCTCCTAATCA
TTTCTTATACGGAGGCAATTGAGATCTTAAAGCAAGCATCCAGAACTTCGCCTTTACACCCAAGTGGGG
TGTTGATCTACAAACGGAACATGAGAAGTACCTGGTGAGACACTGTGGCAACATACCAGTCTTTGTCTATT
AATTATCCATCAGAACTCAAGCCCTTCTACATGAGGGAGAATGAAGATGGTCTCAGAATACAGTTGCTG
CTGTAGATCTTCTGGTTCCTGGAGTTGGGGAGCTCTTTGGAGGTAGCCTCAGGGAGGAACGGTACCACGT
CCTAGAGCAGCGACTAGCAAGATCAGGACTTACGAAAGCCTACCAGTGGTACCTGGATCTTCGCAAGTTT
GGATCTGTGCCCCATGGAGGCTTCGGGATGGGATTTGAACGCTACTTACAGTGCATCCTAGGAGTTGACA
ATATCAAAGATGTTATCCCTTTTCCAAGGTTTACTCATTCTGTCTTTTG

ACGCGTACGCGGCCGCTCGAGCAGAACTCATCTCAGAAGAGGATCTGGCAGCAAATGATATCCTGGATT
ACAAGGATGACGACGATAAGGTTTAA



[View online »](#)

Protein Sequence: >MR203187 protein sequence
 Red=Cloning site Green=Tags(s)

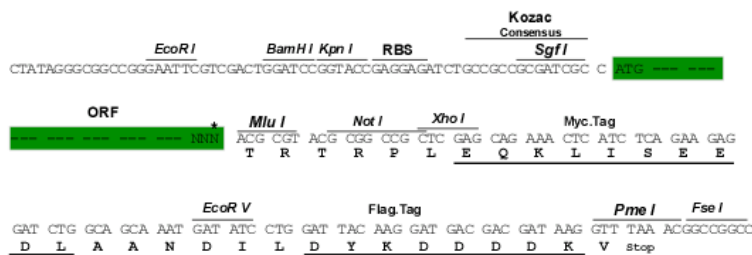
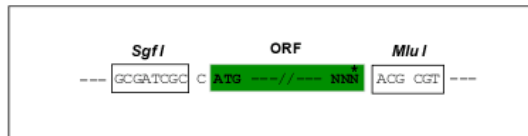
MSGAFTQVFTFGPTFRAENSQSRRLAEFYMVEAEISFVESLQQLMQVMEELFKATTEMVLSHCPEDVEL
 CHQFIAAGQKGRLEHMLKNNFLIISYTEAIEILKQASQNFAPKPKWGVLDLQTEHEKYLVRHCGNIPVFVI
 NYPSELKPFYMRNEDGPQNTVAAVDLLVPGVGELFGGSLREERYHVLEQRLARSLTKAYQWYLDLRKF
 GSVPHGGFGMGFERYLQCILGVDNIKDVIPFPRFTHSCLL

TRTRPLEQKLISEEDLAANDILDYKDDDDKV

Restriction Sites: SgfI-MluI

Cloning Scheme:

Cloning sites used for ORF Shuttling:



* The last codon before the Stop codon of the ORF

ACCN: BC030041

ORF Size: 750 bp

OTI Disclaimer: The molecular sequence of this clone aligns with the gene accession number as a point of reference only. However, individual transcript sequences of the same gene can differ through naturally occurring variations (e.g. polymorphisms), each with its own valid existence. This clone is substantially in agreement with the reference, but a complete review of all prevailing variants is recommended prior to use. [More info](#)

OTI Annotation: This clone was engineered to express the complete ORF with an expression tag. Expression varies depending on the nature of the gene.

Components: The ORF clone is ion-exchange column purified and shipped in a 2D barcoded Matrix tube containing 10ug of transfection-ready, dried plasmid DNA (reconstitute with 100 ul of water).

- Reconstitution Method:**
1. Centrifuge at 5,000xg for 5min.
 2. Carefully open the tube and add 100ul of sterile water to dissolve the DNA.
 3. Close the tube and incubate for 10 minutes at room temperature.
 4. Briefly vortex the tube and then do a quick spin (less than 5000xg) to concentrate the liquid at the bottom.
 5. Store the suspended plasmid at -20°C. The DNA is stable for at least one year from date of shipping when stored at -20°C.

RefSeq: [BC030041](#), [AAH30041](#)

RefSeq Size: 1721 bp

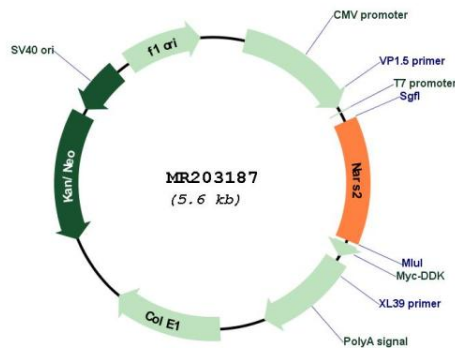
RefSeq ORF: 752 bp

Locus ID: 244141

Cytogenetics: 7 E1

MW: 28.7 kDa

Product images:



Circular map for MR203187