

## Product datasheet for **MR203181**

### **Tmem51 (NM\_145402) Mouse Tagged ORF Clone**

#### Product data:

**Product Type:** Expression Plasmids  
**Product Name:** Tmem51 (NM\_145402) Mouse Tagged ORF Clone  
**Tag:** Myc-DDK  
**Symbol:** Tmem51  
**Synonyms:** BC003277  
**Mammalian Cell Selection:** Neomycin  
**Vector:** pCMV6-Entry (PS100001)  
**E. coli Selection:** Kanamycin (25 ug/mL)  
**ORF Nucleotide Sequence:** >MR203181 ORF sequence  
**Red=Cloning site Blue=ORF Green=Tags(s)**

TTTTGTAATACGACTCACTATAGGGCGGCCGGAATTCGTCGACTGGATCCGGTACCGAGGAGATCTGCC  
GCC**CGATCGCC**

ATGATGGCCCAATCCAAAGCCAACGGCTCACACTACGCACTGACGGCCATCGGCCTGGGGATGCTGGTCC  
TCGGGGTCATCATGGCCATGTGGAACCTGGTTCCTGGTTTCAGCCCTGCGGATAAGCCAACGTCTCAGGG  
CAACAAGACAGAGGGAGGTGGTGGCATCCTCAAGAGCAAGACGTTTTTCAGTGGCGTACGTGCTGGTCGGG  
GCTGGCATGATGCTGCTGCTAGCCATCTGCCTGAGCATCCGGGACAAAAGGAGGATGCGGCAGAGTG  
AGGAGCTGGCTCGAATTCAGCAGCAGGCAGGAACCGTGCCCACTCCCAAGAAGAAGACAGCCAGGAGGA  
AGAGGAGGATGTCTCTCACGGTACTACGTACCGAGCTACGAGGAAGTGATGAACACGGGCTACCCGGAA  
ACCAGGGGGCAGGAGCAGAACCCAAGACTGAGCATTCTCTCCCTCCTATGAGTCGCTAACGGGGCTGG  
ACGAGGCAACCCCAACAGCACCAGGGCGGAGACAGAGACCAGCCAGGGCATGCTCCGGACAGGCAAAA  
CTCCAAGCTGGCCAAACGCCTGAAGCCACTCAAAGTTCGAAGGATTAATCCGAAAAGCTTACCTCAA  
GACTTCAGGATCACCTACCGGACAAGAAGCTTCTCTCCCTATCGAGCCTTTGACTCCTCCGCCCC  
TGTACGATGAGGTCCAGGCAAAGGCGCCCGATGCCCGGCCACCCGAC

**ACGCGT**ACGCGGCCGCTCGAGCAGAACTCATCTCAGAAGAGGATCTGGCAGCAAATGATATCCTGGATT  
ACAAGGATGACGACGATAAGGTTTAA



[View online »](#)

**Protein Sequence:** >MR203181 protein sequence  
Red=Cloning site Green=Tags(s)

MMAQSKANGSHYALTAIGLGMLVLGVIMAMWNLVPGFSPADKPTSQGNKTEGGGGILKSKTF SVAYVLVG  
 AGMMLLLLAICLSIRDKRRMRQSEELARIQQAGTVPHSQEEDSQEEEEVDVSSRYVYVPSYEEVMNTGYPE  
 TRGQEQNPRLSISLPSYESLTGLDEATPTSTRAETETSPGHAPDRQNSKLAKRLKPLKVVRIKSEKLHLK  
 DFRITLDPKKNVPPPSIEPLTPPLYDEVQAKAPDARPPD

TRTRPLEQKLISEEDLAANDILDYKDDDDKV

**Restriction Sites:** SgfI-MluI

**Cloning Scheme:**

Cloning sites used for ORF Shuttling:



\* The last codon before the Stop codon of the ORF

**ACCN:** NM\_145402

**ORF Size:** 750 bp

**OTI Disclaimer:** The molecular sequence of this clone aligns with the gene accession number as a point of reference only. However, individual transcript sequences of the same gene can differ through naturally occurring variations (e.g. polymorphisms), each with its own valid existence. This clone is substantially in agreement with the reference, but a complete review of all prevailing variants is recommended prior to use. [More info](#)

**OTI Annotation:** This clone was engineered to express the complete ORF with an expression tag. Expression varies depending on the nature of the gene.

**Components:** The ORF clone is ion-exchange column purified and shipped in a 2D barcoded Matrix tube containing 10ug of transfection-ready, dried plasmid DNA (reconstitute with 100 ul of water).

**Reconstitution Method:**

1. Centrifuge at 5,000xg for 5min.
2. Carefully open the tube and add 100ul of sterile water to dissolve the DNA.
3. Close the tube and incubate for 10 minutes at room temperature.
4. Briefly vortex the tube and then do a quick spin (less than 5000xg) to concentrate the liquid at the bottom.
5. Store the suspended plasmid at -20°C. The DNA is stable for at least one year from date of shipping when stored at -20°C.

**RefSeq:** [NM\\_145402.3](#), [NP\\_663377.1](#)

**RefSeq Size:** 1874 bp

**RefSeq ORF:** 750 bp

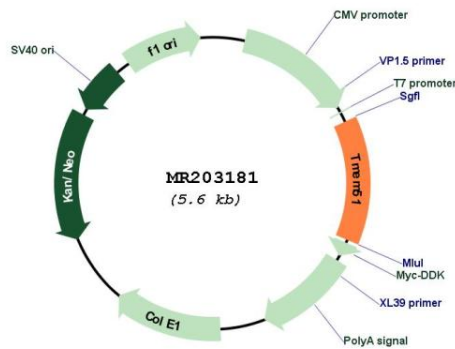
**Locus ID:** 214359

**UniProt ID:** [Q99LG1](#)

**Cytogenetics:** 4 E1

**MW:** 27.4 kDa

**Product images:**



Circular map for MR203181