

## Product datasheet for **MR203169**

### Psme1 (NM\_011189) Mouse Tagged ORF Clone

#### Product data:

Product Type:	Expression Plasmids
Product Name:	Psme1 (NM_011189) Mouse Tagged ORF Clone
Tag:	Myc-DDK
Symbol:	Psme1
Synonyms:	AW413925; PA28a
Mammalian Cell Selection:	Neomycin
Vector:	pCMV6-Entry (PS100001)
E. coli Selection:	Kanamycin (25 ug/mL)
ORF Nucleotide Sequence:	>MR203169 ORF sequence Red=Cloning site Blue=ORF Green=Tags(s)

TTTTGTAATACGACTCACTATAGGGCGGCCGGAATTCGTCGACTGGATCCGGTACCGAGGAGATCTGCC  
GCC**CGATCGCC**

ATGGCCCACTGAGGGTCCATCCCAGCCCAAGCCAAGGTGGATGTGTTCCGTGAAGACCTGTGTAGCA  
AGACAGAGAACCTGCTTGGGAGCTATTTTCCCAAGAAAATCTCAGAGTTGGATGCGTTCTTAAAGGAGCC  
AGCTCTCAATGAAGCCAACCTGAGCAATCTGAAGGCTCCATTGGACATCCAGTACCCGATCCAGTCAA  
GAGAAAGAGAAGGAGGAGCGGAAGAAGCAACAGGAGAAGGAAGAGAAGGAAGAGAAGAAGAAAGGGGACG  
AAGACGACAAAGGTCCCCCTGTGGCCAGTGAAGTCAATGAGAAGATTGTGGTCTCTGCAACGCCT  
AAAACCTGAGATCAAGGATGTCAGTCACTGAGCAACTCAATCTGGTCACTACCTGGTTGCAGCTACAGATACCT  
CGGATAGAGGATGGGAATAATTTTGGCGTGGCTGTCCAGGAAAAGGTGTTTGGAGCTGATGACCAACCTTC  
ACACCAAGCTGGAAGGCTTCCACACGCAGATCTCCAAGTACTTCTCCGAGAGGGGTGACGCCGTGGCCAA  
AGCAGCCAAGCAGCCCCACGTGGGTGACTATCGGCAGCTGGTGCACGAGCTGGACGAGGCGGAGTACCAG  
GAGATCCGTCTGATGGTCATGGAGATCCGAAATGCTTATGCTGTGTTATATGACATCATCTGAAGAAGT  
TTGAGAAGCTCAAGAAGCCCCGTGGAGAAACCAAGGGAATGATCTAT

**ACGCGT**ACGCGGCCGCTCGAGCAGAACTCATCTCAGAAGAGGATCTGGCAGCAAATGATATCCTGGATT  
ACAAGGATGACGACGATAAGGTTTAA



[View online »](#)

**Protein Sequence:** >MR203169 protein sequence  
 Red=Cloning site Green=Tags(s)

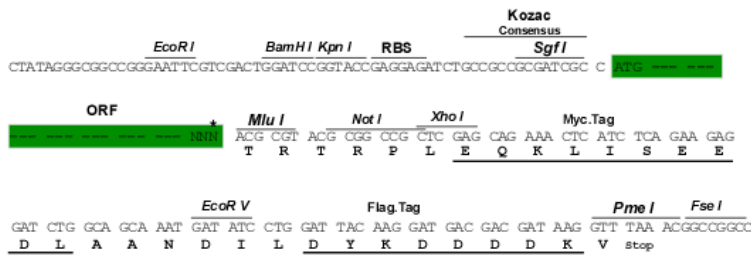
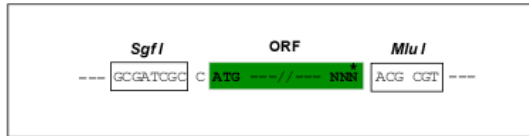
MATLRVHPEAQAKVDFVREDLCSKTENLLGSYFPKKISELDAFLKEPALNEANLSNLKAPLDIPVDPVK  
 EKEKEERKKQKEKEEKEEKKGDEDDKGPVNCNEKIVVLLQRLKPEIKDVTQLNLVTTWLQIQIP  
 RIEDGNNFGVAVQEKVFEMLTNLHTKLEGFHTQISKYFSEKRGDAVAKAAKQPHVGDYRQLVHELDEAEYQ  
 EIRLMVMEIRNAYAVLYDIILKNFEKLLKPRGETKGMIIY

TRTRPLEQKLISEEDLAANDILDYKDDDDKV

**Restriction Sites:** SgfI-MluI

**Cloning Scheme:**

Cloning sites used for ORF Shuttling:



\* The last codon before the Stop codon of the ORF

**ACCN:** NM\_011189

**ORF Size:** 750 bp

**OTI Disclaimer:** The molecular sequence of this clone aligns with the gene accession number as a point of reference only. However, individual transcript sequences of the same gene can differ through naturally occurring variations (e.g. polymorphisms), each with its own valid existence. This clone is substantially in agreement with the reference, but a complete review of all prevailing variants is recommended prior to use. [More info](#)

**OTI Annotation:** This clone was engineered to express the complete ORF with an expression tag. Expression varies depending on the nature of the gene.

**Components:** The ORF clone is ion-exchange column purified and shipped in a 2D barcoded Matrix tube containing 10ug of transfection-ready, dried plasmid DNA (reconstitute with 100 ul of water).

**Reconstitution Method:**

1. Centrifuge at 5,000xg for 5min.
2. Carefully open the tube and add 100ul of sterile water to dissolve the DNA.
3. Close the tube and incubate for 10 minutes at room temperature.
4. Briefly vortex the tube and then do a quick spin (less than 5000xg) to concentrate the liquid at the bottom.
5. Store the suspended plasmid at -20°C. The DNA is stable for at least one year from date of shipping when stored at -20°C.

**RefSeq:** [NM\\_011189.1](#), [NP\\_035319.1](#)

**RefSeq Size:** 977 bp

**RefSeq ORF:** 750 bp

**Locus ID:** 19186

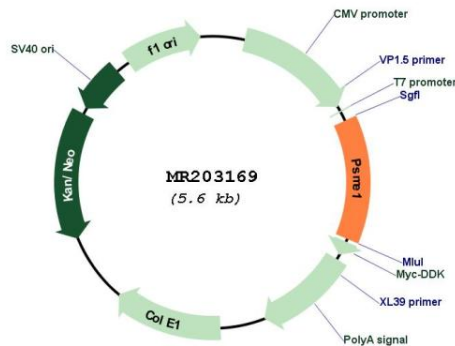
**UniProt ID:** [P97371](#)

**Cytogenetics:** 14 28.19 cM

**MW:** 28.7 kDa

**Gene Summary:** Implicated in immunoproteasome assembly and required for efficient antigen processing. The PA28 activator complex enhances the generation of class I binding peptides by altering the cleavage pattern of the proteasome.[UniProtKB/Swiss-Prot Function]

**Product images:**



Circular map for MR203169