

## Product datasheet for MR203157

### Rtp4 (BC024872) Mouse Tagged ORF Clone

#### Product data:

Product Type:	Expression Plasmids
Product Name:	Rtp4 (BC024872) Mouse Tagged ORF Clone
Tag:	Myc-DDK
Symbol:	Rtp4
Synonyms:	5830458K16Rik; Ifrg28
Mammalian Cell Selection:	Neomycin
Vector:	pCMV6-Entry (PS100001)
E. coli Selection:	Kanamycin (25 ug/mL)
ORF Nucleotide Sequence:	>MR203157 ORF sequence Red=Cloning site Blue=ORF Green=Tags(s)

TTTTGTAATACGACTCACTATAGGGCGCCGGGAATTCGTCGACTGGATCCGGTACCGAGGAGATCTGCC  
GCC**CGATCGCC**

ATGCTGTTCCCCGATGACTTCAGTACTTGGGAGCAGACATTTCAAGAAGTGCAGGAGGAGAAGCCCG  
GGGCCAAGTGGAGCCTGCATTTGGATAAGAACATTGTACCAGATGGTGCAGCCCTGGGATGGAGGCAGCA  
CCAGCAGACAGTGCTTGGCAGGTTCCAGTGTCCAGATGCTGCAGAAAGTTGGACCTCTGCTCAGGTGATG  
ATCTTGTGCCACATGTACCAGGACACTTTGAAATCGCAGGGCCAGGCACGCATGAGGATCTTTGGTCAGA  
AGTGCCAGAAGTGTGGATGTCAATTTGAGACTCCCAAGTTCTCCACAGAGATCATCAAAGAATTCT  
GAATAACCTAGTTAATTATATTCTGCAGAGATACTATGGACACAGGAAGATAGCATTGACCTTGAATGCA  
TCTTTGGGTGAGAAGGTGACTTTGGATGGTCCCCACGACATACGCAATTGTGAGGCATGCAGTCTAACT  
CTCATGGAAGATGTGCCCTTGCATACAAAGTAAAACCACCCAGATCCCCATCTCCATTACCAAAGAGTTC  
CTCCCCATCAAAGAGCTGCCCTCCTCCGCTCAGAACCAGGAATATGGATTTTGGGAATAGAAGTTCAG  
GATTTTGGGAATAGAAGTTCAGGGATGCAGAGAGCCCCCAACGTGAAATAGGGCCACCACTATTTCT  
TGTTTTGTCTATTGCTGCATTTGCCCTTTTAGTCTTTTCACTAGA

**ACGCGT**ACGCGGCCGCTCGAGCAGAACTCATCTCAGAAGAGGATCTGGCAGCAAATGATATCCTGGATT  
ACAAGGATGACGACGATAAGGTTTAA



[View online »](#)

**Protein Sequence:** >MR203157 protein sequence  
 Red=Cloning site Green=Tags(s)

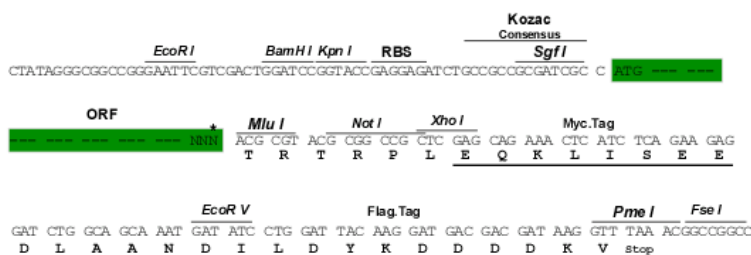
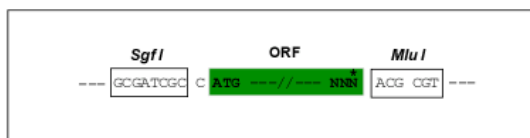
MLFPDDFSTWEQTFQELMQEEKPGAKWSLHLDKNI VPDGAALGWRQHQQTVLGRFQCSRCCRSWTS AQVM  
 ILCHMYQDTLKSQGQARMRIFGQKCQKCFGCQFETPKFSTEIIKRILNNLVNYILQRYYGHRKIALTLNA  
 SLGEKVTLDGPHDIRNCEACSLNSHGRCALAYKVKPPRSPSP LPKSSSPSKSCPPPPPQNRNMDFGNRTFQ  
 DFGNRTFQGREPPQREIGPPLFLFLSIAAFALFLSFTR

TRTRPLEQKLISEEDLAANDILDYKDDDDKV

**Restriction Sites:** SgfI-MluI

**Cloning Scheme:**

Cloning sites used for ORF Shuttling:



\* The last codon before the Stop codon of the ORF

**ACCN:** BC024872

**ORF Size:** 747 bp

**OTI Disclaimer:** The molecular sequence of this clone aligns with the gene accession number as a point of reference only. However, individual transcript sequences of the same gene can differ through naturally occurring variations (e.g. polymorphisms), each with its own valid existence. This clone is substantially in agreement with the reference, but a complete review of all prevailing variants is recommended prior to use. [More info](#)

**OTI Annotation:** This clone was engineered to express the complete ORF with an expression tag. Expression varies depending on the nature of the gene.

**Components:** The ORF clone is ion-exchange column purified and shipped in a 2D barcoded Matrix tube containing 10ug of transfection-ready, dried plasmid DNA (reconstitute with 100 ul of water).

**Reconstitution Method:**

1. Centrifuge at 5,000xg for 5min.
2. Carefully open the tube and add 100ul of sterile water to dissolve the DNA.
3. Close the tube and incubate for 10 minutes at room temperature.
4. Briefly vortex the tube and then do a quick spin (less than 5000xg) to concentrate the liquid at the bottom.
5. Store the suspended plasmid at -20°C. The DNA is stable for at least one year from date of shipping when stored at -20°C.

**RefSeq:** [BC024872](#), [AAH24872](#)

**RefSeq Size:** 1651 bp

**RefSeq ORF:** 749 bp

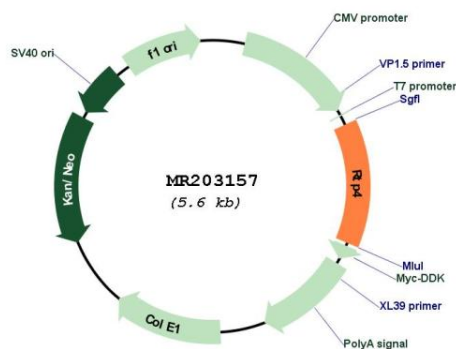
**Locus ID:** 67775

**Cytogenetics:** 16 B1

**MW:** 28.5 kDa

**Gene Summary:** Probable chaperone protein which facilitates trafficking and functional cell surface expression of some G-protein coupled receptors (GPCRs). Promotes functional expression of the bitter taste receptor TAS2R16 (By similarity). Also promotes functional expression of the opioid receptor heterodimer OPRD1-OPRM1 (PubMed:18836069).[UniProtKB/Swiss-Prot Function]

### Product images:



Circular map for MR203157