

Product datasheet for MR203154

Ifi30 (NM_023065) Mouse Tagged ORF Clone

Product data:

Product Type:	Expression Plasmids
Product Name:	Ifi30 (NM_023065) Mouse Tagged ORF Clone
Tag:	Myc-DDK
Symbol:	Ifi30
Synonyms:	GILT; IP30
Mammalian Cell Selection:	Neomycin
Vector:	pCMV6-Entry (PS100001)
E. coli Selection:	Kanamycin (25 ug/mL)
ORF Nucleotide Sequence:	>MR203154 ORF sequence Red=Cloning site Blue=ORF Green=Tags(s)

TTTTGTAATACGACTCACTATAGGGCGGCCGGAATTCGTCGACTGGATCCGGTACCGAGGAGATCTGCC
GCC**CGATCGCC**

ATGTCCTGGTCTCCGATCCTACCATTTTGTCCCTTCTGCTTCTGCTGTTCCCACTCGAGGTTCCAGAG
CAGCCACTGCGTCCCTTTCGCAAGCATCCTCCGAAGGCACAACCACCTGCAAGGTCCACGATGTGTGCCT
CTTGGGGCCACGCCATTGCCCTTACCACCTGTCAGAGTCAGCCTGTATTATGAGTCCCTGTGTGGA
GCTTGTGCTACTTCTCGTCCGGATTGTTCCCAACCTGGCTGATGGTATGGAATCATGAACATCA
CCCTGGTGCCCTACGGGAATGCACAGGAGAGAAATGTCAGCGGTACGTGGGAGTTCACGTGCCAGCACGG
GGAGCTGGAGTGTAGACTGAACATGGTGGAGGCCCTGTCTGCTGGATAAGCTGGAAAAGGAGGCAGCGTTC
CTAACCATCGTCTGTATGGAGGAGATGGATGATATGGAGAAGAACTGGGACCGTGCCTGCAGGTGTATG
CTCCTGAGGTGTCACCAGAGAGTATCATGGAGTGCACCACAGGAAAACGGGGCACACAGCTCATGCATGA
GAATGCCAGCTCACAGATGCCCTACCCACCCACGAGTATGTGCCCTGGGTGCTGGTCAATGAGAAA
CCTTTGAAGGACCCAGCGAGCTCTGAGCATAGTCTGTCAGTGTACCAGGGAACGGAGAAGCCAGACA
TCTGCTCCTCCATTGCCGACTCCCCAGGAAGGTCTGCTATAAG

ACGCGTACGCGGCCGCTCGAGCAGAACTCATCTCAGAAGAGGATCTGGCAGCAAATGATATCCTGGATT
ACAAGGATGACGACGATAAGGTTTAA



[View online »](#)

Protein Sequence: >MR203154 protein sequence
Red=Cloning site Green=Tags(s)

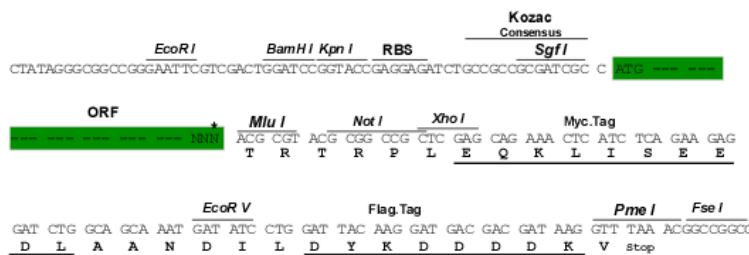
MSWSPILPFLSLLLLLPLEVPRAATASLSQASSEGTTTCKVHDVCLLGPRPLPPSPVVRVSLYYESLCG
 ACRYFLVRDLFPTWLMVMEIMNITLVPYGNAQERNVSGTWEFTCQHGELECLNMVEACLLDKLEKAAAF
 LTIVCMEEMDDMEKKGPCQLQVYAPEVSPESIMECATGKRGTQLMHENAQLTDALHPPHEVYPWVLVNEK
 PLKDPSELLSIVCQLYQGTEKPDICSSIADSPRKVCYK

TRTRPLEQKLISEEDLAANDILDYKDDDDKV

Restriction Sites: SgfI-MluI

Cloning Scheme:

Cloning sites used for ORF Shuttling:



* The last codon before the Stop codon of the ORF

ACCN: NM_023065

ORF Size: 747 bp

OTI Disclaimer: The molecular sequence of this clone aligns with the gene accession number as a point of reference only. However, individual transcript sequences of the same gene can differ through naturally occurring variations (e.g. polymorphisms), each with its own valid existence. This clone is substantially in agreement with the reference, but a complete review of all prevailing variants is recommended prior to use. [More info](#)

OTI Annotation: This clone was engineered to express the complete ORF with an expression tag. Expression varies depending on the nature of the gene.

Components: The ORF clone is ion-exchange column purified and shipped in a 2D barcoded Matrix tube containing 10ug of transfection-ready, dried plasmid DNA (reconstitute with 100 ul of water).

Reconstitution Method:

1. Centrifuge at 5,000xg for 5min.
2. Carefully open the tube and add 100ul of sterile water to dissolve the DNA.
3. Close the tube and incubate for 10 minutes at room temperature.
4. Briefly vortex the tube and then do a quick spin (less than 5000xg) to concentrate the liquid at the bottom.
5. Store the suspended plasmid at -20°C. The DNA is stable for at least one year from date of shipping when stored at -20°C.

RefSeq: [NM_023065.2](#)

RefSeq Size: 997 bp

RefSeq ORF: 747 bp

Locus ID: 65972

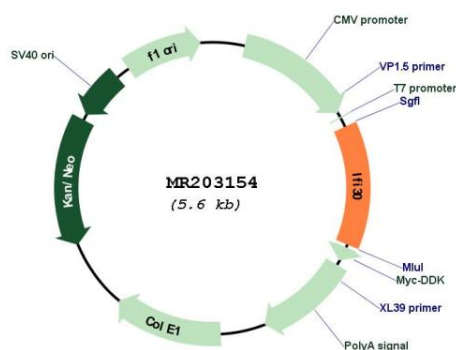
UniProt ID: [Q9ESY9](#)

Cytogenetics: 8 B3.3

MW: 27.8 kDa

Gene Summary: Lysosomal thiol reductase that can reduce protein disulfide bonds. May facilitate the complete unfolding of proteins destined for lysosomal degradation. Plays an important role in antigen processing. Facilitates the generation of MHC class II-restricted epitodes from disulfide bond-containing antigen by the endocytic reduction of disulfide bonds. Facilitates also MHC class I-restricted recognition of exogenous antigens containing disulfide bonds by CD8+ T-cells or crosspresentation.[UniProtKB/Swiss-Prot Function]

Product images:



Circular map for MR203154