

Product datasheet for MR203137

Nanos1 (BC056473) Mouse Tagged ORF Clone

Product data:

Product Type: Expression Plasmids
Product Name: Nanos1 (BC056473) Mouse Tagged ORF Clone
Tag: Myc-DDK
Symbol: Nanos1
Synonyms: nanos1
Vector: pCMV6-Entry (PS100001)
E. coli Selection: Kanamycin (25 ug/mL)
Cell Selection: Neomycin
ORF Nucleotide Sequence: >MR203137 representing BC056473
 Red=Cloning site Blue=ORF Green=Tags(s)

TTTTGTAATACGACTCACTATAGGGCGCCGGGAATTCGTCGACTGGATCCGGTACCGAGGAGATCTGCC
 GCC**CGGATCGCC**

ATGGCGCTCGTGCCAGCGCCCGCTACGTGAGCGCCTCGGGCCCGGTGCACCCGCAGCCCTTCAGCTCCT
 GGAACGACTACCTGGGGTTGCCAGCTCATCACCAGGGCTAGCGACCGGGCTCCCCGCATGAGGGGCC
 CGGGCCACGGCGCGGGGCCACGATGGGGCCCGCCGAGGACGATGAAGACGATGACGGCGAAGAGCCG
 GAGGCCGGGGCCGCTACCTGGGCGGTGCGTTGGAAGTGCAGCGACTAGAGCTGTGTGCCGGCCCGCTG
 AGCCCGGGTTGCTGGAGGAGCGCTTCGCTGAGCTGAACCCGTTTGCAGGGCGCGCCGCGCGTTTCTGCT
 GGGCTGCGCGCCACCGCTCCACCACCGCCGCGCCGCATCCACGGCCGAAGTGACGCCGCGCGAAGAG
 CCAAGCCCTGCGTGGGCTGCCGAGCCTCGTCTGCACGCGGCTTCCGGGGCGACCGCCGCAGTCTGCTGA
 AACCGGAGCTTCAGGTGTGTGTTTTGCCGGAACAACAAGGAGGCGGTGGCGCTCTACACCACACAT
 CCTCAAGGGCCCGGACGGCCGGGTGCTGTGCCCGGTCTTGCAGCGCTACACGTGCCCCCTGTGCGGGCC
 AGCGGCGACAACGCACATACCATCAAGTATTGCCCGCTCTCAAAGTGCCACCGCCACCGTCCGCCCGC
 CGCCGCGCAGCAACAGGGACAGCCTGCCAGCAAGAAGCTGCGC

ACGCGTACGCGGGCCGCTCGAGCAGAAACTCATCTCAGAAGAGGATCTGGCAGCAAATGATATCCTGGATT
 ACAAGGATGACGACGATAAGGTTTAA

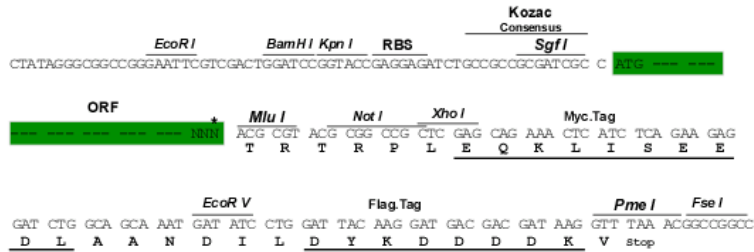
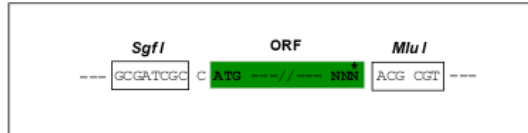
Restriction Sites: Sgfl-MluI



[View online »](#)

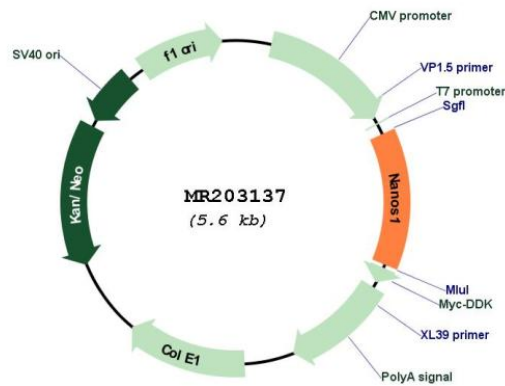
Cloning Scheme:

Cloning sites used for ORF Shuttling:



* The last codon before the Stop codon of the ORF

Plasmid Map:



ACCN: BC056473

ORF Size: 744 bp

OTI Disclaimer:	The molecular sequence of this clone aligns with the gene accession number as a point of reference only. However, individual transcript sequences of the same gene can differ through naturally occurring variations (e.g. polymorphisms), each with its own valid existence. This clone is substantially in agreement with the reference, but a complete review of all prevailing variants is recommended prior to use. More info
OTI Annotation:	This clone was engineered to express the complete ORF with an expression tag. Expression varies depending on the nature of the gene.
Components:	The ORF clone is ion-exchange column purified and shipped in a 2D barcoded Matrix tube containing 10ug of transfection-ready, dried plasmid DNA (reconstitute with 100 ul of water).
Reconstitution Method:	<ol style="list-style-type: none">1. Centrifuge at 5,000xg for 5min.2. Carefully open the tube and add 100ul of sterile water to dissolve the DNA.3. Close the tube and incubate for 10 minutes at room temperature.4. Briefly vortex the tube and then do a quick spin (less than 5000xg) to concentrate the liquid at the bottom.5. Store the suspended plasmid at -20°C. The DNA is stable for at least one year from date of shipping when stored at -20°C.
RefSeq:	BC056473 , AAH56473
RefSeq Size:	3632 bp
RefSeq ORF:	746 bp
Locus ID:	332397
Cytogenetics:	19 D3
MW:	133.1 kDa
Gene Summary:	This gene encodes a CCHC-type zinc finger protein that is a member of the nanos family. This protein co-localizes with the RNA-binding protein pumilio RNA-binding family member 2 and may be involved in regulating translation as a post-transcriptional repressor. Mutations in a similar protein in human are associated with spermatogenic impairment. [provided by RefSeq, Sep 2015]