

Product datasheet for **MR203125**

Zfp637 (BC021601) Mouse Tagged ORF Clone

Product data:

Product Type:	Expression Plasmids
Product Name:	Zfp637 (BC021601) Mouse Tagged ORF Clone
Tag:	Myc-DDK
Symbol:	Zfp637
Synonyms:	MGC54806
Mammalian Cell Selection:	Neomycin
Vector:	pCMV6-Entry (PS100001)
E. coli Selection:	Kanamycin (25 ug/mL)
ORF Nucleotide Sequence:	>MR203125 representing BC021601 Red=Cloning site Blue=ORF Green=Tags(s)

TTTTGTAATACGACTCACTATAGGGCGCCGGGAATTCGTCGACTGGATCCGGTACCGAGGAGATCTGCC
GCC**CGATCGCC**

ATGACAGAAGCCACAAGTATGATCCTTCAGAGGCCACAGGATCCTCAAGCTGGGATTTCCAGAGCTCTT
TCAGAAGAGAGAAGCTGGAACAAAAGTCCCGGAGTCTAAGGCCCTCCAGGAAGACTCACCTGGAGTGAG
GCAGAAGGTCTATGATTGCCAGGAATGTGGGAAGTCTTCCGGCAGAAAGGGAGCCTAACGCTGCACGAG
AGAATCCACACTGGTCAGAAGCCCTTTGAGTGCACCCAGTGTGGGAAAAGCTTCAGGGCCAAGGGCAACC
TGGTTACACATCAGCGGATCCACACAGGAGAGAAGCCCTATCAGTGCAAAGAGTGTGGGAAAAGCTTCAG
TCAGCGAGGCAGCCTGGCTGTCCACGAGAGACTCCACACTGGACAGAAACCCTACGAGTGTGCCATTTGC
CAGAGGAGCTTCCGAAATCAAAGTAACCTCGCCGTGCACCGAAGATTACAGCGGTGAGAAGCCCTATA
GATGCGACCAGTGTGGAAAAGCTTTCAGCCAGAAAGGAAGCTTAATTGTGCACATCCGCGTCCACACGGG
TCTGAAGCCCTACGCGTGTCCCACTGCAGGAAGAGCTTCATACCAGGGGCAACTGTCTCCTGCATGGA
AAAGTCCACACGGGAGAGACACCCTATCTCTGTGGCCAGTGTGGGAAAAGTTTCACTCAGAGAGGGAGCC
TGGCTGTGCACCAGCGAAGCTGCTCACAACGGCTCACTCTG

AG**CGGACCG**ACGCGTACGCGGCCGCTCGAGCAGAACTCATCTCAGAAGAGGATCTGGCAGCAAATGATATCC
TGGATTACAAGGATGACGACGATAAGGTTTAA



[View online »](#)

Protein Sequence: >MR203125 representing BC021601
 Red=Cloning site Green=Tags(s)

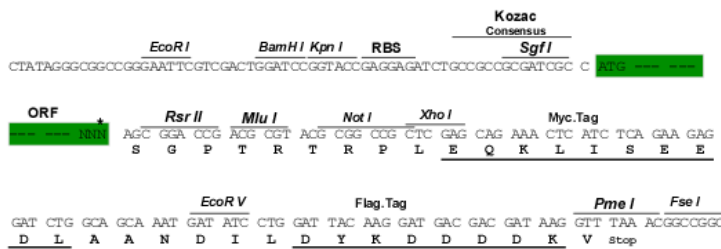
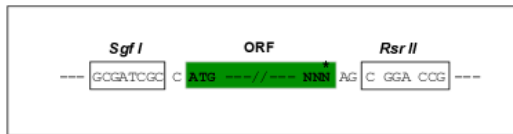
MTEAHKYDPSEATGSSSWDFQSSFRREKLEQKSPESKALQEDSPGVRQKVYDCQECGKSFQRQKGSLLTHE
 RIHTGQKPFECTQCGKSFRAKGNLVTHQRIHTGEKPYCKEKGKSF SQRGSLAVHERLHTGQKPYECAIC
 QRSFRNQSNLAVHRRVHSGEKPYRCDQCGKAFSQKGSLLVHIRVHTGLKPYACSHCRKSFHTRGNCLLHG
 KVHTGETPYLCCGCGKSFTRGSLAVHQRSCSQRLTL

SGPTRRRLEQKLI SEEDLAANDILDYKDDDDKV

Restriction Sites: SgfI-RsrII

Cloning Scheme:

Cloning sites used for ORF Shuttling:



* The last codon before the Stop codon of the ORF

ACCN: BC021601

ORF Size: 741 bp

OTI Disclaimer: The molecular sequence of this clone aligns with the gene accession number as a point of reference only. However, individual transcript sequences of the same gene can differ through naturally occurring variations (e.g. polymorphisms), each with its own valid existence. This clone is substantially in agreement with the reference, but a complete review of all prevailing variants is recommended prior to use. [More info](#)

OTI Annotation: This clone was engineered to express the complete ORF with an expression tag. Expression varies depending on the nature of the gene.

Components: The ORF clone is ion-exchange column purified and shipped in a 2D barcoded Matrix tube containing 10ug of transfection-ready, dried plasmid DNA (reconstitute with 100 ul of water).

Reconstitution Method:

1. Centrifuge at 5,000xg for 5min.
2. Carefully open the tube and add 100ul of sterile water to dissolve the DNA.
3. Close the tube and incubate for 10 minutes at room temperature.
4. Briefly vortex the tube and then do a quick spin (less than 5000xg) to concentrate the liquid at the bottom.
5. Store the suspended plasmid at -20°C. The DNA is stable for at least one year from date of shipping when stored at -20°C.

RefSeq: [BC021601.1](#)

RefSeq Size: 1150 bp

RefSeq ORF: 743 bp

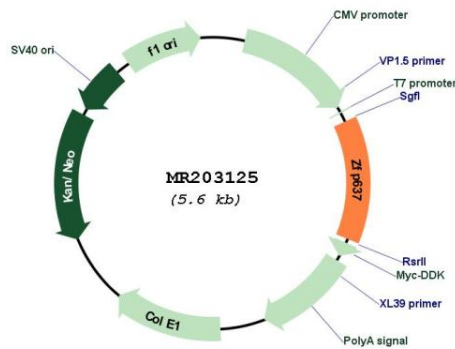
Locus ID: 232337

Cytogenetics: 6 F1

MW: 42.1 kDa

Gene Summary: May be involved in transcriptional regulation.[UniProtKB/Swiss-Prot Function]

Product images:



Circular map for MR203125