

Product datasheet for MR203114

Rtbdn (NM_144929) Mouse Tagged ORF Clone

Product data:

Product Type:	Expression Plasmids
Product Name:	Rtbdn (NM_144929) Mouse Tagged ORF Clone
Tag:	Myc-DDK
Symbol:	Rtbdn
Synonyms:	A330096I21Rik; BC022744; Rtbnd
Mammalian Cell Selection:	Neomycin
Vector:	pCMV6-Entry (PS100001)
E. coli Selection:	Kanamycin (25 ug/mL)
ORF Nucleotide Sequence:	>MR203114 representing NM_144929 Red=Cloning site Blue=ORF Green=Tags(s)

CTATAGGGCGCCCGGAATTCGTCGACTGGATCCGGTACCGAGGAGATCTGCCGCCGCGATCGCCGGCGC
GCC

ATGGCCACGAAGGCCACTCTCAACACAGCGGCCCTGGTCTGGGCCCTGCGACCGATCCTGGCTTGGATCT
TCTTGGTGGCCTGTGGATGGAGTCACCCACTGCAGACTAGGTCTGGGGACACCCCTGGACTGGCAGCCAA
GGTGCGCACAGGCCAGCTGCAGCCGGCAGGGCACCCTCAGTCCTCGGTTCTACCATCATACCAAGGATC
CAAGTTCCTGGCTCACAGACACCACCAGTGCCAGTGCCTTGCTGTACTGCAGAGATAGACAGACCAGAGA
GCCTTCTAGAGAGCTGCGGGCACCAAGCCAGAATGTGAATTCTCCTGGGACAACTTCAAGGAGCCCT
TCGCGATCGCTTCCACCCACAGCTCTTCGGGGCAGCCCAAGTGCAGCCTCTCTGCCCAGAGCTCTGCCAG
ATTTGGTTCACCACCTGCCAAGCAGATTTATTTGTGGCCCGACTTGGCTGCAGTCTCTGGAGAGAGAG
GCTGTGAGCCCAGCTGCCGACCTATGGGCAGACCTTCGCCAACGCCACAGATCTGTGTCCTCTGTTTT
GGGTCAATGCTCGGGTAGCAGCTCCAGGTTCCAGTCACTGCCTCAACGTCTCCATCTCCTCTCCAGGA
GCGCGCCCGCCCTCGTGCCTGGATTTCAAATGTTGTAGGCAGTGGTAGTGGCAGCGGCAGCGCGACA
GCCCGAGCCAATGTTTGGCTTTCAATACGTGTCCCTTCCC

ACGCGTACGCGGCCGCTCGAGCAGAACTCATCTCAGAAGAGGATCTGGCAGCAAATGATATCCTGGATT
ACAAGGATGACGACGATAAGGTTTAA



[View online »](#)

Protein Sequence: >MR203114 representing NM_144929
 Red=Cloning site Green=Tags(s)

MAHEGHSQHSGLVWALRPILAWIFLVACGWSHPLQTRSWGHPGLAAKVRTGQLQPAGHPQSSVLPSPYPRI
 QVPGSQTPPVPCCTAEIDRPESLLESCGAPSPCEFFLQGLQALRDRFHPQLFGARPVQPLCPQLCQ
 IWF TTCQADFCGPTWLQSSGERGCEPSCRITYGQTFANATDLCHSVLGHVLRVAAPGSSHCLNVSISSPG
 ARRRPRAWISNVVGS GSGSGSGDSPEPMFGFYVSLP

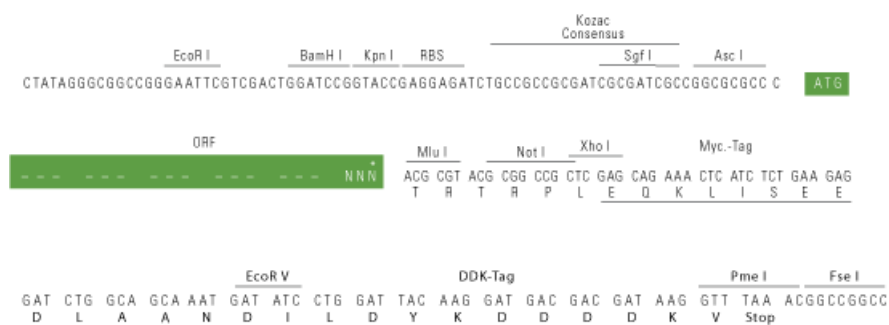
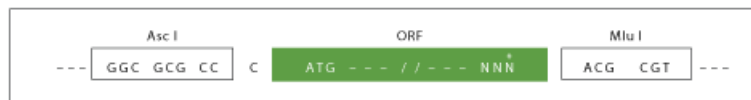
TRTRPLEQKLI SEEDLAANDILDYKDDDDKV

Chromatograms: https://cdn.origene.com/chromatograms/mm9005_d09.zip

Restriction Sites: AscI-MluI

Cloning Scheme:

Cloning sites used for ORF Shuttling:



* The last codon before the Stop codon of the ORF

ACCN: NM_144929

ORF Size: 741 bp

OTI Disclaimer: The molecular sequence of this clone aligns with the gene accession number as a point of reference only. However, individual transcript sequences of the same gene can differ through naturally occurring variations (e.g. polymorphisms), each with its own valid existence. This clone is substantially in agreement with the reference, but a complete review of all prevailing variants is recommended prior to use. [More info](#)

OTI Annotation: This clone was engineered to express the complete ORF with an expression tag. Expression varies depending on the nature of the gene.

Components: The ORF clone is ion-exchange column purified and shipped in a 2D barcoded Matrix tube containing 10ug of transfection-ready, dried plasmid DNA (reconstitute with 100 ul of water).

Reconstitution Method:

1. Centrifuge at 5,000xg for 5min.
2. Carefully open the tube and add 100ul of sterile water to dissolve the DNA.
3. Close the tube and incubate for 10 minutes at room temperature.
4. Briefly vortex the tube and then do a quick spin (less than 5000xg) to concentrate the liquid at the bottom.
5. Store the suspended plasmid at -20°C. The DNA is stable for at least one year from date of shipping when stored at -20°C.

RefSeq: [NM_144929.3](#)

RefSeq Size: 1923 bp

RefSeq ORF: 744 bp

Locus ID: 234542

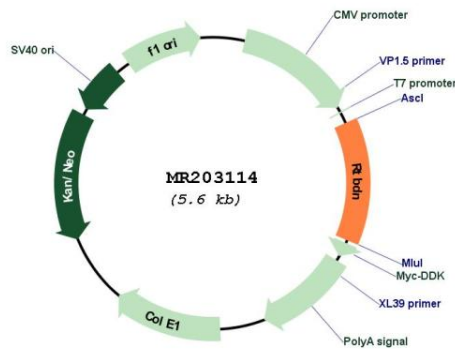
UniProt ID: [Q8QZY4](#)

Cytogenetics: 8 C3

MW: 27 kDa

Gene Summary: Riboflavin-binding protein which might have a role in retinal flavin transport. [UniProtKB/Swiss-Prot Function]

Product images:



Circular map for MR203114