

## Product datasheet for **MR203112**

### Abhd14a (NM\_145919) Mouse Tagged ORF Clone

#### Product data:

**Product Type:** Expression Plasmids  
**Product Name:** Abhd14a (NM\_145919) Mouse Tagged ORF Clone  
**Tag:** Myc-DDK  
**Symbol:** Abhd14a  
**Synonyms:** 1110013B16Rik; AW558221; Dorz1  
**Mammalian Cell Selection:** Neomycin  
**Vector:** pCMV6-Entry (PS100001)  
**E. coli Selection:** Kanamycin (25 ug/mL)  
**ORF Nucleotide Sequence:** >MR203112 ORF sequence  
Red=Cloning site Blue=ORF Green=Tags(s)

TTTTGTAATACGACTCACTATAGGGCGCCGGGAATTCGTCGACTGGATCCGGTACCGAGGAGATCTGCC  
GCC**CGATCGCC**

ATGGTACAGAAATTCATGAGCCGGTACCAGGCAGCCCTGCTGGGTCTAGGCTTGCTGCTCGTGTTCCTCC  
TGTATATGGGCTTGCTGGCCACCCGAGCAGACTTCGCGACTCTGGAGAGGCCCTAATGTCACAGTCCT  
GACTGGTCTCACCAGAGGCAACTCTCGAATCTTTACCGAGAGGTGCTGCCAATCCAGCAGGCATGCAGG  
GCAGAAGTCGTGTTTCTCCATGGAAAAGCATTAAATCCACACATGGGAACAGCTGGGGACATTGCAGC  
TACTGTCAGAGAGGGCTACCGGCTGTGGCCATCGACCTTCCAGTTTTGGGAACCTAGCCCTTCAGA  
GGAGGTGAGCACAGAGGCAGGCCGAGTGGAGTTGCTGGAGAGAGTGTCCAGGACCTACAGTGCAGAAT  
ACTGTGTTGGTGAGCCCTCGCTGAGTGGCAGCTATGCCCTGCCCTTCTTGATGCAAAAACCACCAGC  
TACGTGGATTCGTGCCATCGCACCCACCTACACCAGGAATATGCACAGGAACAATTCAGGGCTGTGAA  
GACCCCAACTCTTATCCTGTATGGGGAACCTGGACCACACCTTGGCTCGAGAGTCACTTCAGCAGCTCCGC  
CACCTGCCAACCCTCCATGGTGAAGCTGCGTGTATGCAGGTCACGCCGCTACCTCCATAAGCCAGAAG  
CCTTCCACCTCGCCCTTCTTGCCCTCCTTGACCATTGCCT

**ACGCGT**ACGCGGCCGCTCGAGCAGAACTCATCTCAGAAGAGGATCTGGCAGCAAATGATATCCTGGATT  
ACAAGGATGACGACGATAAGGTTTAA



[View online »](#)

**Protein Sequence:** >MR203112 protein sequence  
 Red=Cloning site Green=Tags(s)

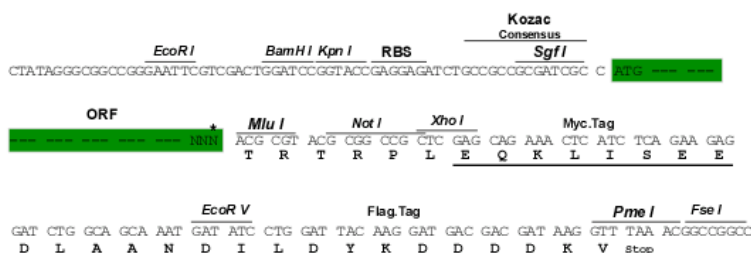
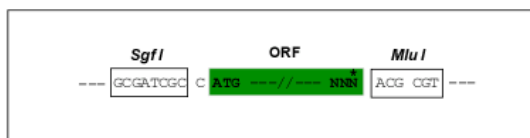
MVQKFMSTRYQAALLGLGLLLVFLLYMGLPGPPEQTSRLWRGPNVTVL TGLTRGNSRIFYREVLPIQQACR  
 AEVVFLHGKAFNSHTWEQLGTLQLLSERGYRAVAIDLPGFGNSAPSEEVSTEAGRVELLERVFQDLQVQN  
 TVLVSPSLSGSYALPFLMQNHHQLRGFVPIAPTYTRNYAQEQFRAVKPTLILYGELDHTLARESLLQQLR  
 HLPNHSMVKLRDAGHARYLHKPEAFHLALLAFLDLHP

TRTRPLEQKLISEEDLAANDILDYKDDDDKV

**Restriction Sites:** Sgfl-MluI

**Cloning Scheme:**

Cloning sites used for ORF Shuttling:



\* The last codon before the Stop codon of the ORF

**ACCN:** NM\_145919

**ORF Size:** 744 bp

**OTI Disclaimer:** The molecular sequence of this clone aligns with the gene accession number as a point of reference only. However, individual transcript sequences of the same gene can differ through naturally occurring variations (e.g. polymorphisms), each with its own valid existence. This clone is substantially in agreement with the reference, but a complete review of all prevailing variants is recommended prior to use. [More info](#)

**OTI Annotation:** This clone was engineered to express the complete ORF with an expression tag. Expression varies depending on the nature of the gene.

**Components:** The ORF clone is ion-exchange column purified and shipped in a 2D barcoded Matrix tube containing 10ug of transfection-ready, dried plasmid DNA (reconstitute with 100 ul of water).

- Reconstitution Method:**
1. Centrifuge at 5,000xg for 5min.
  2. Carefully open the tube and add 100ul of sterile water to dissolve the DNA.
  3. Close the tube and incubate for 10 minutes at room temperature.
  4. Briefly vortex the tube and then do a quick spin (less than 5000xg) to concentrate the liquid at the bottom.
  5. Store the suspended plasmid at -20°C. The DNA is stable for at least one year from date of shipping when stored at -20°C.

**RefSeq:** [NM\\_145919.1](#), [NP\\_666031.1](#)

**RefSeq Size:** 1258 bp

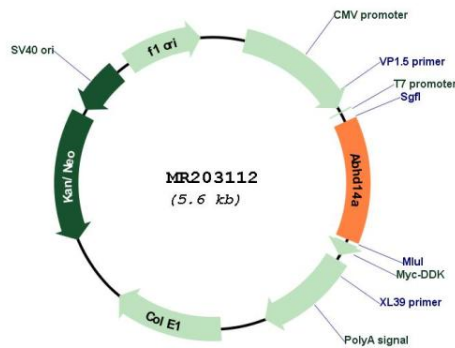
**RefSeq ORF:** 747 bp

**Locus ID:** 68644

**Cytogenetics:** 9 F1

**MW:** 27.9 kDa

**Product images:**



Circular map for MR203112