

Product datasheet for MR203108

2410002F23Rik (NM_025880) Mouse Tagged ORF Clone

Product data:

Product Type:	Expression Plasmids
Product Name:	2410002F23Rik (NM_025880) Mouse Tagged ORF Clone
Tag:	Myc-DDK
Symbol:	2410002F23Rik
Synonyms:	MGC27669; MGC69849
Mammalian Cell Selection:	Neomycin
Vector:	pCMV6-Entry (PS100001)
E. coli Selection:	Kanamycin (25 ug/mL)
ORF Nucleotide Sequence:	>MR203108 ORF sequence Red=Cloning site Blue=ORF Green=Tags(s)

TTTTGTAATACGACTCACTATAGGGCGGCCGGAATTCGTCGACTGGATCCGGTACCGAGGAGATCTGCC
GCC**CGATCGCC**

ATGGTCACCTGGATCCTGCGGGTGTATGACCAGGGAGGCCCTGCCCTGTCCCTGAATTCTGGGGAGCTGG
GGCTGCTGGGTGACCTCACCCATGATGCCATCTTAACTACCGCTGCAAGGCCCTGCGGGGGCTGGCTG
CCAGACTCTCCTGAGCTGGCTGCTGCAGGCCTGGCGTCAGCGTTGGGAATCCTCCCTGCATTTTGAGGCC
ACCGAGTTACCTTCAGGCCCTGGACCACCATGGAGGAAGGCATCCAGTTGGTGCCTGAGCTGGGCATGA
TTGAGTGGATCTACCTTGACCCAGAAGGGCCCGTGGACCTGGCCCAGAGGATGTGGCCTCACTCAAGG
CCTGCAGCGGCGCCTGCTCACAGCAGCCCCCTCTGAGCTGCGGCTTTCAGTGGTCAAGCCTGCTGGTACGT
GGCATGACAGTGTGGAGGCTGTGATGGAGATCCAGACTATTGCTGACGTGGGTCTGCTCTGGCGCCAGA
GCCATCCAGGCCGACCAAGCTCATGTTGGGGCCCAACCAACTCGTAAGGACCTCTAGGCTGGCTGCT
CAGCCACGGTGTACCCCGGGAGCAAGTAGACAGACAGCCACCAAGTACTCCTAGAAGTCTACATCAA
GAAGCCAAGCGCAGTCGCGGCCACCCAACTATGGGCTGAACGAGGAGCAGCCCCACCACCCCTTACT
CCGACCAGGCTGTGGGAAGAGCAACCGGTGCGTCATGAC

ACGCGTACGCGGCCGCTCGAGCAGAACTCATCTCAGAAGAGGATCTGGCAGCAAATGATATCCTGGATT
ACAAGGATGACGACGATAAGGTTTAA



[View online »](#)

Protein Sequence: >MR203108 protein sequence
 Red=Cloning site Green=Tags(s)

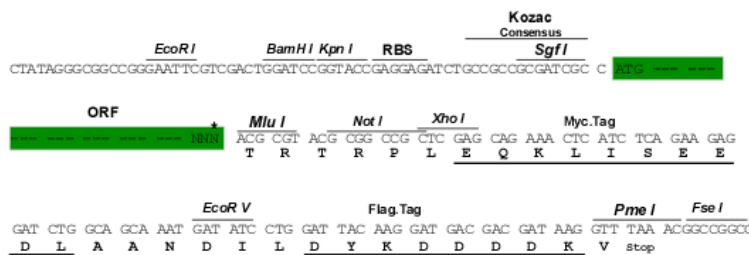
MVTWILRVYDQGGPALSLSNGELGLLDLTHDAIFNYRCKALRGAGCQTLLSWLLQAWRQRWESSLHFEA
 TELPFRPWTTEEGIQLVRELGMIEWIYLDPEGPVDLAPEDVAF TQGLQRRLTAAPSELRLSLVSLVLR
 GMTVLEAVMEIQTIADVGLLWRQSHPGRTKLMGPNPTRKDLLGWLLSHGVPREQVDRQPTKVLLLELYIK
 EAKRSRGHPNYGLNEEQPPPPYSDQACGEEQPVRHD

TRTRPLEQKLISEEDLAANDILDYKDDDDKV

Restriction Sites: SgfI-MluI

Cloning Scheme:

Cloning sites used for ORF Shuttling:



* The last codon before the Stop codon of the ORF

ACCN: NM_025880

ORF Size: 744 bp

OTI Disclaimer: The molecular sequence of this clone aligns with the gene accession number as a point of reference only. However, individual transcript sequences of the same gene can differ through naturally occurring variations (e.g. polymorphisms), each with its own valid existence. This clone is substantially in agreement with the reference, but a complete review of all prevailing variants is recommended prior to use. [More info](#)

OTI Annotation: This clone was engineered to express the complete ORF with an expression tag. Expression varies depending on the nature of the gene.

Components: The ORF clone is ion-exchange column purified and shipped in a 2D barcoded Matrix tube containing 10ug of transfection-ready, dried plasmid DNA (reconstitute with 100 ul of water).

Reconstitution Method:

1. Centrifuge at 5,000xg for 5min.
2. Carefully open the tube and add 100ul of sterile water to dissolve the DNA.
3. Close the tube and incubate for 10 minutes at room temperature.
4. Briefly vortex the tube and then do a quick spin (less than 5000xg) to concentrate the liquid at the bottom.
5. Store the suspended plasmid at -20°C. The DNA is stable for at least one year from date of shipping when stored at -20°C.

RefSeq: [NM_025880.3](#), [NP_080156.1](#)

RefSeq Size: 2001 bp

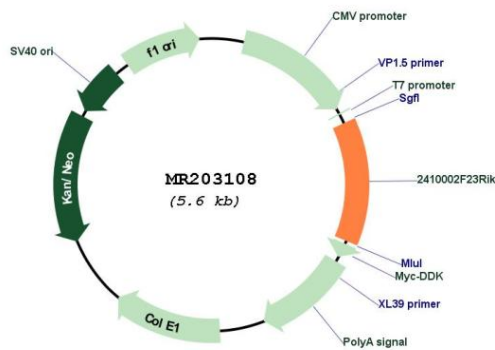
RefSeq ORF: 855 bp

Locus ID: 668661

Cytogenetics: 7 B3

MW: 28 kDa

Product images:



Circular map for MR203108