

Product datasheet for MR203106

Gzmb (NM_013542) Mouse Tagged ORF Clone

Product data:

Product Type:	Expression Plasmids
Product Name:	Gzmb (NM_013542) Mouse Tagged ORF Clone
Tag:	Myc-DDK
Symbol:	Gzmb
Synonyms:	AI553453; CCP; CCP-1/C1; CCP-1/C11; CCP1; Ctl; Ctla; Ctla-1; Ctla1; GZB
Mammalian Cell Selection:	Neomycin
Vector:	pCMV6-Entry (PS100001)
E. coli Selection:	Kanamycin (25 ug/mL)
ORF Nucleotide Sequence:	>MR203106 ORF sequence Red=Cloning site Blue=ORF Green=Tags(s)

TTTTGTAATACGACTCACTATAGGGCGGCCGGAATTCGTCGACTGGATCCGGTACCGAGGAGATCTGCC
GCC**CGATCGCC**

ATGAAGATCCTCCTGCTACTGCTGACCTTGCTCTGGCCTCCAGGACAAAGGCAGGGGAGATCATCGGGG
GACATGAAGTCAAGCCCCACTCTCGACCCTACATGGCCTTACTTTGATCAAGGATCAGCAGCCTGAGGC
GATATGTGGGGGCTTCTTATTCGAGAGGACTTTGTGCTGACTGCTGCTCACTGTGAAGGAAGTATAATA
AATGTCACCTTTGGGGGCCACAACATCAAAGAAGAGGAGAGCCAGCAAGTCATCCCTATGGTAAAT
GCATTCACCACCCAGACTATAATCCTAAGACATTCTCCAATGACATCATGCTGCTAAAGCTGAAGAGTAA
GGCCAAGAGGACTAGAGCTGTGAGGCCCTCAACCTGCCAGGCATGTCAATGTGAAGCCAGGAGAT
GTGTGCTATGTGGCTGGTTGGGGAAGGATGGCCCCAATGGGCAAATACTCAAACACGCTACAAGAGGTTG
AGCTGACAGTACAGAAGGATCGGGAGTGTGAGTCCTACTTTAAAAATCGTTACAACAAAACCAATCAGAT
ATGTGCGGGGGACCCAAAGACCAACGTGCTTCTTTTCGGGGGGATTCTGGAGGCCCGCTTGTGTGTA
AAAGTGGCTGCAGGCATAGTTTCTATGGATATAAGGATGGTTACCTCCACGTGCTTTCACCAAAGTCT
CGAGTTTCTTATCCTGGATAAAGAAAACAATGAAAAGCAGC

ACGCGTACGCGGCCGCTCGAGCAGAACTCATCTCAGAAGAGGATCTGGCAGCAAATGATATCCTGGATT
ACAAGGATGACGACGATAAGGTTTAA



[View online »](#)

Protein Sequence: >MR203106 protein sequence
 Red=Cloning site Green=Tags(s)

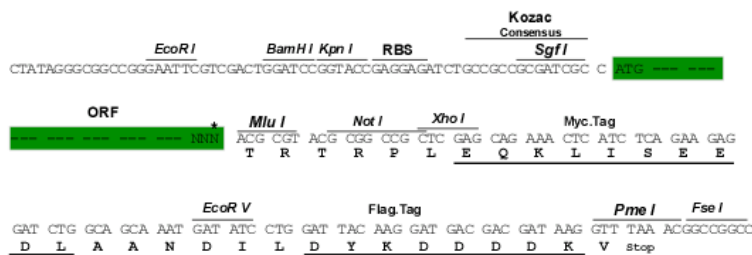
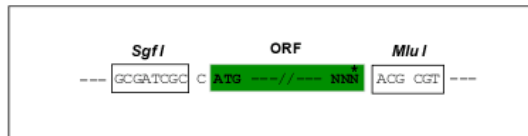
MKILLLLTSLASRTKAGEIIGGHEVKPHSRPYMALLSIKDQQPEAICGGFLIREDFVLTAAHCEGSII
 NVTLGAHNIKEQEKTQQVIPMVKCIPHPDYNPKTFSDIMLLKLSKAKRTRAVRPLNLP RRNVNVKPGD
 VCYVAGWGRMAPMGKYSNTLQVELTVQKDRECESYFKNRYNKTNQICAGDPKTKRASFRGDSGGPLVCK
 KVAAGIVSYGYKDGSPPRRAFTKVSSFLSWIKKTMKSS

TRTRPLEQKLISEEDLAANDILDYKDDDDKV

Restriction Sites: Sgfl-MluI

Cloning Scheme:

Cloning sites used for ORF Shuttling:



* The last codon before the Stop codon of the ORF

ACCN: NM_013542

ORF Size: 744 bp

OTI Disclaimer: The molecular sequence of this clone aligns with the gene accession number as a point of reference only. However, individual transcript sequences of the same gene can differ through naturally occurring variations (e.g. polymorphisms), each with its own valid existence. This clone is substantially in agreement with the reference, but a complete review of all prevailing variants is recommended prior to use. [More info](#)

OTI Annotation: This clone was engineered to express the complete ORF with an expression tag. Expression varies depending on the nature of the gene.

Components: The ORF clone is ion-exchange column purified and shipped in a 2D barcoded Matrix tube containing 10ug of transfection-ready, dried plasmid DNA (reconstitute with 100 ul of water).

Reconstitution Method:

1. Centrifuge at 5,000xg for 5min.
2. Carefully open the tube and add 100ul of sterile water to dissolve the DNA.
3. Close the tube and incubate for 10 minutes at room temperature.
4. Briefly vortex the tube and then do a quick spin (less than 5000xg) to concentrate the liquid at the bottom.
5. Store the suspended plasmid at -20°C. The DNA is stable for at least one year from date of shipping when stored at -20°C.

RefSeq: [NM_013542.3](#)

RefSeq Size: 1418 bp

RefSeq ORF: 744 bp

Locus ID: 14939

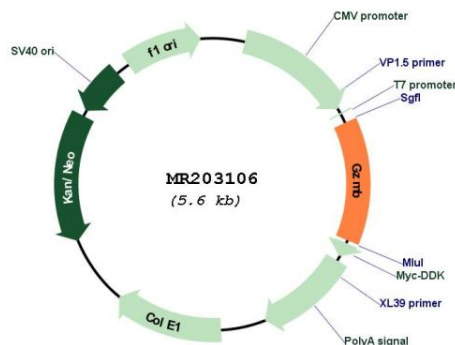
UniProt ID: [P04187](#)

Cytogenetics: 14 28.19 cM

MW: 27.5 kDa

Gene Summary: This gene encodes a member of the granzyme subfamily of proteins, part of the peptidase S1 family of serine proteases. The encoded preproprotein is secreted by natural killer (NK) cells and cytotoxic T lymphocytes (CTLs) and proteolytically processed to generate the active protease, which induces target cell apoptosis. This protein also processes cytokines and degrades extracellular matrix proteins, and these roles are implicated in chronic inflammation and wound healing. Mice lacking a functional copy of this gene exhibit impaired immune cell-mediated cytotoxicity. [provided by RefSeq, Sep 2016]

Product images:



Circular map for MR203106