

Product datasheet for MR203095

Klk6 (NM_001164696) Mouse Tagged ORF Clone

Product data:

Product Type:	Expression Plasmids
Product Name:	Klk6 (NM_001164696) Mouse Tagged ORF Clone
Tag:	Myc-DDK
Symbol:	Klk6
Synonyms:	AI849898; BSP; Bssp; Klk29; MSP; neurosin; Prss9; Prss18
Mammalian Cell Selection:	Neomycin
Vector:	pCMV6-Entry (PS100001)
E. coli Selection:	Kanamycin (25 ug/mL)
ORF Nucleotide Sequence:	>MR203095 ORF sequence Red=Cloning site Blue=ORF Green=Tags(s)

TTTTGTAATACGACTCACTATAGGGCGCCGGGAATTCGTCGACTGGATCCGGTACCGAGGAGATCTGCC
GCC**CGATCGCC**

ATGCCCATGAAGATGCTGACAATGAAGATGCTGGCCCTGTGCTTGGTTCTTGCTAAATCAGCCTGGTCGG
AGGAACAGGAGAAGGTGGTTCATGGAGGCCGTGTTTGAAGGACTCCACCCTTTCAGGCTGCCCTCTA
CACCTCAGGTCACCTGCTGTGTGGTGGGGTCTCATTGACCCACAGTGGGTGCTGACAGCTGCCACTGC
AAAAAACCGAATCTGCAGGTGATCTTGGGAAACACAACCTACGGCAAACAGAGACTTCCAAAGGCAAA
TCTCAGTGACAGGACTATTGTCCATCCCCGCTACAACCCTGAAACCCACGACAATGACATCATGATGGT
GCATCTGAAAAATCCAGTCAAATCTCTAAAAAGATCCAGCCTCTGCCCTTGAAGAATGACTGCTCTGAG
GAGAATCCCAACTGCCAGATCCTGGGCTGGGGCAAGATGGAAAATGGTGACTTCCCAGATACCATTCACT
GTGCTGATGTCCATCTGGTGCCCGGGAGCAGTGTGAGCGTGCCTACCCTGGCAAGATCACCCAGAGCAT
GGTGTGCGCAGGCGACATGAAAGAAGGCAACGATTCTGTGAGGGTATTCTGGAGGTCCCTAGTATGT
GGGGTTCGCTCCGAGGGCTCGTGTGATGGGGTGCATGCCCTGTGGATCAAAGGAGAAGCCAGGAGTTT
ACACCGATGTCTGCACTCATATCAGATGGATCCAAAACATCCTCAGAAACAAGTGGCTG

ACGCGTACGCGGCCGCTCGAGCAGAAACTCATCTCAGAAGAGGATCTGGCAGCAAATGATATCCTGGATT
ACAAGGATGACGACGATAAGGTTTAA



[View online »](#)

Protein Sequence: >MR203095 protein sequence
 Red=Cloning site Green=Tags(s)

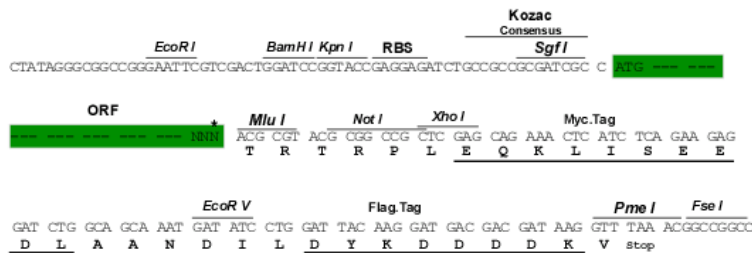
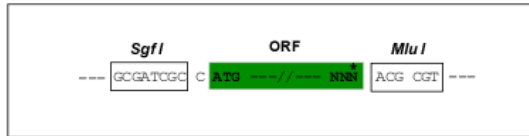
MPMKMLTMKMLALCLVLAKSAWSEEQEKVVHGGPCLKDSHPFQAALYTSGHLLCGGVLIDPQWVLTAAHC
 KKPNIQVILGKHNLRQTETFQRQISVDRTIVHPRYNPETHDNDIMMVHLKNPVKFSKKIQPLPKNDCSE
 ENPNCQILGWGMENGDFPDTIQCADVHLVPREQCERAYPGKITQSMVCAGDMKEGNDSCQGDSSGGPLVC
 GGRLRGLVSWGDMPCGSKEKPGVYTDVCTHIRWIQNILRNKWL

TRTRPLEQKLISEEDLAANDILDYKDDDDKV

Restriction Sites: SgfI-MluI

Cloning Scheme:

Cloning sites used for ORF Shuttling:



* The last codon before the Stop codon of the ORF

ACCN: NM_001164696

ORF Size: 762 bp

OTI Disclaimer: The molecular sequence of this clone aligns with the gene accession number as a point of reference only. However, individual transcript sequences of the same gene can differ through naturally occurring variations (e.g. polymorphisms), each with its own valid existence. This clone is substantially in agreement with the reference, but a complete review of all prevailing variants is recommended prior to use. [More info](#)

OTI Annotation: This clone was engineered to express the complete ORF with an expression tag. Expression varies depending on the nature of the gene.

Components: The ORF clone is ion-exchange column purified and shipped in a 2D barcoded Matrix tube containing 10ug of transfection-ready, dried plasmid DNA (reconstitute with 100 ul of water).

Reconstitution Method:

1. Centrifuge at 5,000xg for 5min.
2. Carefully open the tube and add 100ul of sterile water to dissolve the DNA.
3. Close the tube and incubate for 10 minutes at room temperature.
4. Briefly vortex the tube and then do a quick spin (less than 5000xg) to concentrate the liquid at the bottom.
5. Store the suspended plasmid at -20°C. The DNA is stable for at least one year from date of shipping when stored at -20°C.

RefSeq: [NM_001164696.1](#), [NP_001158168.1](#)

RefSeq Size: 1350 bp

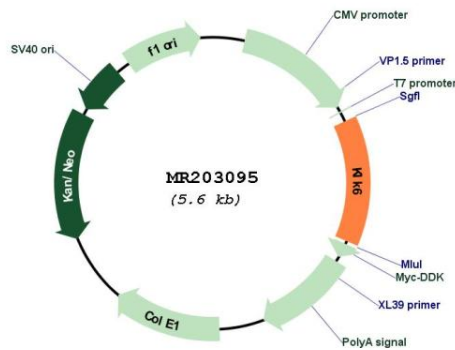
RefSeq ORF: 762 bp

Locus ID: 19144

Cytogenetics: 7 28.28 cM

MW: 28.3 kDa

Product images:



Circular map for MR203095