

Product datasheet for MR203066

Bcap31 (NM_012060) Mouse Tagged ORF Clone

Product data:

Product Type:	Expression Plasmids
Product Name:	Bcap31 (NM_012060) Mouse Tagged ORF Clone
Tag:	Myc-DDK
Symbol:	Bcap31
Synonyms:	Bap31
Mammalian Cell Selection:	Neomycin
Vector:	pCMV6-Entry (PS100001)
E. coli Selection:	Kanamycin (25 ug/mL)
ORF Nucleotide Sequence:	>MR203066 ORF sequence Red=Cloning site Blue=ORF Green=Tags(s)

TTTTGTAATACGACTCACTATAGGGCGCCGGGAATTCGTCGACTGGATCCGGTACCGAGGAGATCTGCC
GCC**CGATCGCC**

ATGAGTTTGCAGTGGACTACAGTTGCCACCTTCCTCTACGCAGAGGTCTTTGCTGTGTTGCTTCTCTGCA
TTCCCTTCATTTCTCCAAAAGATGGCAGAAGGTTTTTAAATCCCGGCTGGTGGAGTTGGTAGTGACCTA
TGGCAACACTTTCTTTGTGGTTCTCATCGTCATCCTTGACTGTTGGTTATTGATGCTGTACGAGAGATC
CTGAAATACGATGATGTACAGAAAAGGTGAACCTCCAGAACAATCCAGGTGCCATGGAGCACTTCCACA
TGAAGCTTTTCCGTGCTCAGAGGAATCTCTATATTGCTGGCTTTTCTTGCTGCTGTCCTTCTGCTTAG
ACGCCTGGTACTCTCATCTCCCAGCAGGCCACACTGCTGGCCTCCAATGAAGCCTTTAAAAAGCAGGCA
GAAAGTGCCAGTGAAGCGCCCAAGAAATACATGGAGGAGAATGATCAGCTAAAGAAGGGAGCTGCCGAGG
ATGGAGACAAGTTGGATATTGGGAATACTGAAATGAAGTTAGAGGAGAACAAGAGCCTGAAGAATGACCT
GAGGAAGCTAAAAGATGAGCTGGCCAGCACCAAGAAAAAATTGAGAAAGCTGAAAACGAGGCTCTGGCT
ATGCAGAAGCAGTCTGAGGGCCTTACCAAAGAATATGACCGCCTGCTAGAAGAACATGCCAACTGCAGG
CATCAGTACGTGGTCCCTCAGTCAAGAAGGAGGAG

ACGCGTACGCGGCCGCTCGAGCAGAACTCATCTCAGAAGAGGATCTGGCAGCAAATGATATCCTGGATT
ACAAGGATGACGACGATAAGGTTTAA



[View online »](#)

Protein Sequence: >MR203066 protein sequence
Red=Cloning site Green=Tags(s)

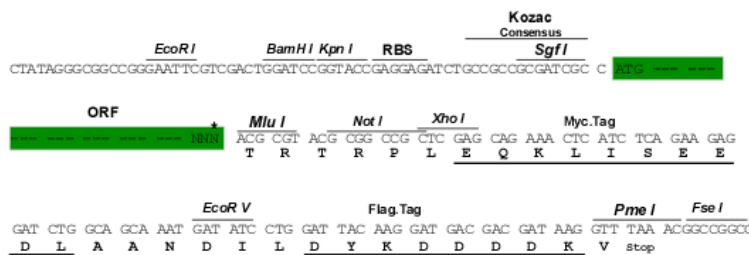
MSLQWTTVATFLYAEVFAVLLLCIPFISPQRWQKVFKSRLVELVVTYGNTEFFVVLIVILVLLVIDAVREI
 LKYDDVTEKVNQLQNNPGAMEHFHMKLFRAQRNLYIAGFSLLL SFLLRRLVTLISQQATLLASNEAFKKQA
 ESASEAAKKYMEENDQLKKGAAEDGDKLDIGNTEMKLEENKSLKNDLRKLDKDELASTKKKLEKAENEALA
 MQKQSEGLTKEYDRLLLEEHAQLQASVRGSPSVKKEE

TRTRPLEQKLISEEDLAANDILDYKDDDDKV

Restriction Sites: SgfI-MluI

Cloning Scheme:

Cloning sites used for ORF Shuttling:



* The last codon before the Stop codon of the ORF

ACCN: NM_012060

ORF Size: 738 bp

OTI Disclaimer: The molecular sequence of this clone aligns with the gene accession number as a point of reference only. However, individual transcript sequences of the same gene can differ through naturally occurring variations (e.g. polymorphisms), each with its own valid existence. This clone is substantially in agreement with the reference, but a complete review of all prevailing variants is recommended prior to use. [More info](#)

OTI Annotation: This clone was engineered to express the complete ORF with an expression tag. Expression varies depending on the nature of the gene.

Components: The ORF clone is ion-exchange column purified and shipped in a 2D barcoded Matrix tube containing 10ug of transfection-ready, dried plasmid DNA (reconstitute with 100 ul of water).

Reconstitution Method:

1. Centrifuge at 5,000xg for 5min.
2. Carefully open the tube and add 100ul of sterile water to dissolve the DNA.
3. Close the tube and incubate for 10 minutes at room temperature.
4. Briefly vortex the tube and then do a quick spin (less than 5000xg) to concentrate the liquid at the bottom.
5. Store the suspended plasmid at -20°C. The DNA is stable for at least one year from date of shipping when stored at -20°C.

RefSeq: [NM_012060.1](#), [NM_012060.2](#), [NM_012060.3](#), [NM_012060.4](#), [NM_012060.5](#), [NP_036190.2](#)

RefSeq Size: 1214 bp

RefSeq ORF: 738 bp

Locus ID: 27061

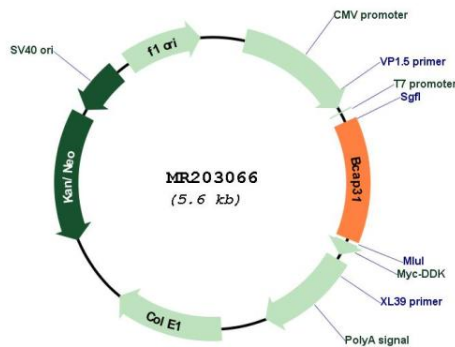
UniProt ID: [Q61335](#)

Cytogenetics: X A7.3

MW: 28 kDa

Gene Summary: Functions as a chaperone protein. Is one of the most abundant endoplasmic reticulum (ER) proteins. Plays a role in the export of secreted proteins in the ER, the recognition of abnormally folded protein and their targeting to the ER associated-degradation (ERAD). Also serves as a cargo receptor for the export of transmembrane proteins. May be involved in CASP8-mediated apoptosis.[UniProtKB/Swiss-Prot Function]

Product images:



Circular map for MR203066