

Product datasheet for MR203052

Mbl2 (NM_010776) Mouse Tagged ORF Clone

Product data:

Product Type:	Expression Plasmids
Product Name:	Mbl2 (NM_010776) Mouse Tagged ORF Clone
Tag:	Myc-DDK
Symbol:	Mbl2
Synonyms:	L-MBP; MBL; MBL-C; MBP-C
Mammalian Cell Selection:	Neomycin
Vector:	pCMV6-Entry (PS100001)
E. coli Selection:	Kanamycin (25 ug/mL)
ORF Nucleotide Sequence:	>MR203052 ORF sequence Red=Cloning site Blue=ORF Green=Tags(s)

TTTTGTAATACGACTCACTATAGGGCGGCCGGAATTCGTCGACTGGATCCGGTACCGAGGAGATCTGCC
GCC**CGATCGCC**

ATGTCCATTTTCACATCCTTCTCTGCTGTGTGTGGTGACAGTGGTTTATGCAGAGACCTTAACCGAAG
GTGTTCAAATTCCTGCCCTGTGGTTACCTGCAGTTCTCCAGGCCTGAATGGCTTCCAGGCAAAGATGG
ACGTGACGGTGCCAAGGGAGAAAAGGGAGAACCAGGTCAAGGGCTCAGAGCTTGAAGGCCCTCTGGA
AAAGTAGGACCTACAGGACCCCCAGGGAATCCGGGTTAAAAGGAGCAGTGGGACCGAAAGGAGACCGTG
GGGACAGAGCAGAATTTGATACTAGCGAAATTGATTCAGAAATTGCAGCCCTACGATCAGAGCTGAGAGC
CCTGAGAAACTGGGTGCTTCTCTCTGAGTGAAAAAGTTGAAAAGAAGTATTTTGTGAGCAGTGTAAA
AAGATGAGCCTTGACAGAGTGAAGGCCCTGTGCTCCGAATTCAGGGCTCTGTGGCCACTCCAGGAATG
CTGAGGAAAACCTCGGCCATCCAGAAAGTGGCCAAAGATATTGCCTACTTGGGCATCACAGATGTGAGGGT
TGAAGGCAGTTTTGAGGATCTGACAGGAAACAGAGTGCCTATACTAATTGGAATGATGGGGAGCCCAAC
AACACGGGCGATGGGGAAGACTGTGTGGTATCTTGGAAATGGCAAGTGAACGATGTCCCCTGCTCTG
ACTTTTTTTGGCAATCTGTGAATCTCTGAC

ACGCGTACGCGGCCGCTCGAGCAGAACTCATCTCAGAAGAGGATCTGGCAGCAAATGATATCCTGGATT
ACAAGGATGACGACGATAAGGTTTAA



[View online »](#)

Protein Sequence: >MR203052 protein sequence
 Red=Cloning site Green=Tags(s)

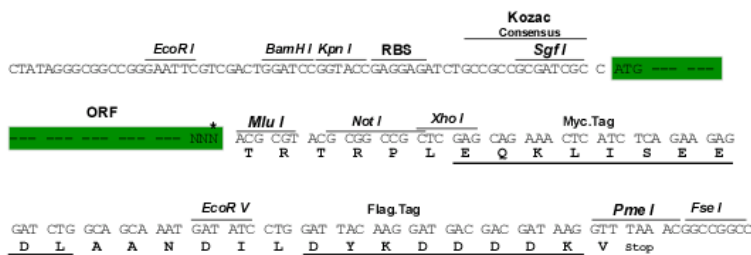
MSIFTSFLLLCVVTVVYAETLTEGVQNSCPVVTCSPLNGFPGKDGRDGAKGEKGEPEGQLRGLQGPPG
 KVGPTGPPGNPGLKGAVGPKGDRDRAEFDTSEIDSEIAALRSELRALRNWVLFSLSEKVGKKYFVSSVK
 KMSLDRVKALCSEFQGSVATPRNAEENSAIQKVAKDIAYLGITDVRVEGSFEDLTGNRVRVYTNWNDGEPN
 NTGDGEDCVVILGNGKWNVPCSDSFLAICEFSD

TRTRPLEQKLISEEDLAANDILDYKDDDDKV

Restriction Sites: SgfI-MluI

Cloning Scheme:

Cloning sites used for ORF Shuttling:



* The last codon before the Stop codon of the ORF

ACCN: NM_010776

ORF Size: 735 bp

OTI Disclaimer: The molecular sequence of this clone aligns with the gene accession number as a point of reference only. However, individual transcript sequences of the same gene can differ through naturally occurring variations (e.g. polymorphisms), each with its own valid existence. This clone is substantially in agreement with the reference, but a complete review of all prevailing variants is recommended prior to use. [More info](#)

OTI Annotation: This clone was engineered to express the complete ORF with an expression tag. Expression varies depending on the nature of the gene.

Components: The ORF clone is ion-exchange column purified and shipped in a 2D barcoded Matrix tube containing 10ug of transfection-ready, dried plasmid DNA (reconstitute with 100 ul of water).

Reconstitution Method:

1. Centrifuge at 5,000xg for 5min.
2. Carefully open the tube and add 100ul of sterile water to dissolve the DNA.
3. Close the tube and incubate for 10 minutes at room temperature.
4. Briefly vortex the tube and then do a quick spin (less than 5000xg) to concentrate the liquid at the bottom.
5. Store the suspended plasmid at -20°C. The DNA is stable for at least one year from date of shipping when stored at -20°C.

RefSeq: [NM_010776.2](#)

RefSeq Size: 1069 bp

RefSeq ORF: 735 bp

Locus ID: 17195

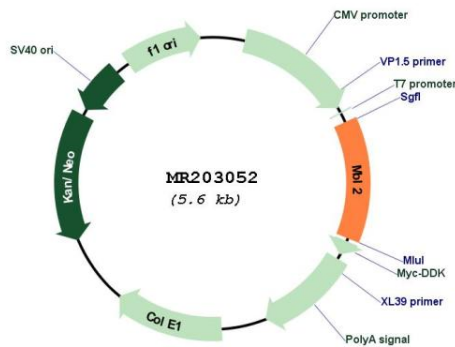
UniProt ID: [P41317](#)

Cytogenetics: 19 25.14 cM

MW: 26 kDa

Gene Summary: Calcium-dependent lectin involved in innate immune defense. Binds mannose, fucose and N-acetylglucosamine on different microorganisms and activates the lectin complement pathway. Binds to late apoptotic cells, as well as to apoptotic blebs and to necrotic cells, but not to early apoptotic cells, facilitating their uptake by macrophages (By similarity). [UniProtKB/Swiss-Prot Function]

Product images:



Circular map for MR203052