

Product datasheet for **MR203016**

Tpk1 (NM_013861) Mouse Tagged ORF Clone

Product data:

Product Type:	Expression Plasmids
Product Name:	Tpk1 (NM_013861) Mouse Tagged ORF Clone
Tag:	Myc-DDK
Symbol:	Tpk1
Mammalian Cell Selection:	Neomycin
Vector:	pCMV6-Entry (PS100001)
E. coli Selection:	Kanamycin (25 ug/mL)
ORF Nucleotide Sequence:	>MR203016 ORF sequence Red=Cloning site Blue=ORF Green=Tags(s)

TTTTGTAATACGACTCACTATAGGGCGGCCGGAATTCGTCGACTGGATCCGGTACCGAGGAGATCTGCC
GCC**CGATCGCC**

ATGGAGCATGCCTTTACCCCGTTGGAACCCCTGCTACCTACGGGGAAGCTGAAATACTGCCTTGTGGTTC
TTAATCAGCCTTTGGATGCACGATTTCCGCATCTTTGGAAAAAGCTCTTTAAGAGCCTGTGCTGATGG
GGGTGCCAACCACCTTATATGATCTCACTGAAGGAGAGAGAGAAAGCTTCTTGCCTGAATTCGTCACTGGG
GACTTTGATTCTATTAGGCCTGAAGTCAAAGAGTACTACACCAAGAAGGGCTGTGATCTTATTTCAACTC
CTGACCAAGACCACACTGACTTTACCAAGTGTCTTCAAGTGTCTCAAAGGAAGATAGAGGAAAAGGAACT
GCAGGTTGACGTGATTGTGACACTGGGAGGTCTCGGTGGGCGTTTTGACCAAATCATGGCCTCTGTGAAT
ACCCTTTTCCAAGCCACTCACATCACTCCTGTGCCGATTATAATAATCCAAAAGGACTCTCTCATCTACC
TCCTCCAACCCGGAAGCACAGGCTCCATGTAGACACTGGAATGGAAGGGAGCTGGTGTGGCCTGATTCC
TGTTGGACAGCCTTGCAACCAGGTGACGACAACAGGCCTGAAATGGAACCTCACAATGATGTTCTTGGC
TTTGGAACTGGTCAGTACTTCTAACACCTACGATGGTCCGGCCTTGTCACTGTGAAACTGACCACC
CACTCCTCTGGACCATGGCCATCAAGAGC

ACGCGTACGCGGCCGCTCGAGCAGAAACTCATCTCAGAAGAGGATCTGGCAGCAAATGATATCCTGGATT
ACAAGGATGACGACGATAAGGTTTAA



[View online »](#)

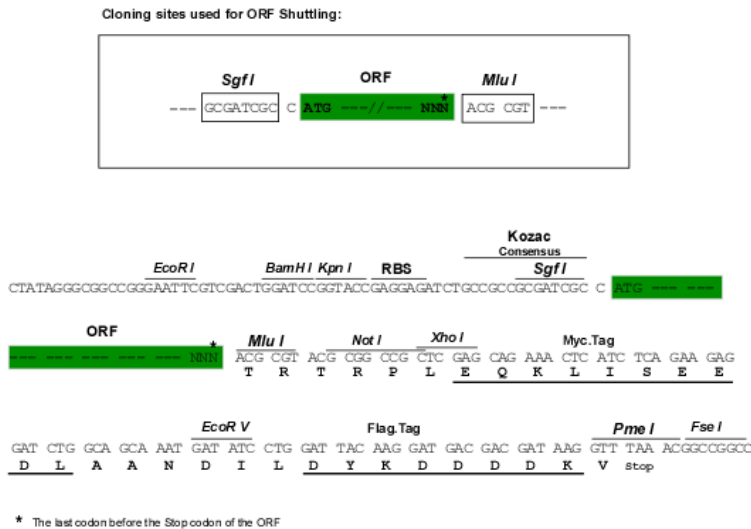
Protein Sequence: >MR203016 protein sequence
 Red=Cloning site Green=Tags(s)

MEHAFTPLEPLLPTGNLKYCLVVLNQPLDARFRHLWKKALLRACADGGANHLVDL TEGERESFLPEFVSG
 DFDSIRPEVKEYYTKKGC DLISTPDQDHTDFTKCLQVLQRKIEEKELQVDVIVTLGGLGGRFDQIMASVN
 TLFQATHITPVP IIIIQKDSL IYLLQPGKHLHVD TGMEGSWCGLIPVQGPCNQVTTTGLKWNLTNDVLG
 FGTLVSTSN TYDGSGLVTVETDHP LLWTMAIKS

TRTRPLEQKLISEEDLAANDILDYKDDDDKV

Restriction Sites: SgfI-MluI

Cloning Scheme:



ACCN: NM_013861

ORF Size: 732 bp

OTI Disclaimer: The molecular sequence of this clone aligns with the gene accession number as a point of reference only. However, individual transcript sequences of the same gene can differ through naturally occurring variations (e.g. polymorphisms), each with its own valid existence. This clone is substantially in agreement with the reference, but a complete review of all prevailing variants is recommended prior to use. [More info](#)

OTI Annotation: This clone was engineered to express the complete ORF with an expression tag. Expression varies depending on the nature of the gene.

Components: The ORF clone is ion-exchange column purified and shipped in a 2D barcoded Matrix tube containing 10ug of transfection-ready, dried plasmid DNA (reconstitute with 100 ul of water).

Reconstitution Method:

1. Centrifuge at 5,000xg for 5min.
2. Carefully open the tube and add 100ul of sterile water to dissolve the DNA.
3. Close the tube and incubate for 10 minutes at room temperature.
4. Briefly vortex the tube and then do a quick spin (less than 5000xg) to concentrate the liquid at the bottom.
5. Store the suspended plasmid at -20°C. The DNA is stable for at least one year from date of shipping when stored at -20°C.

RefSeq: [NM_013861.4](#)

RefSeq Size: 2562 bp

RefSeq ORF: 732 bp

Locus ID: 29807

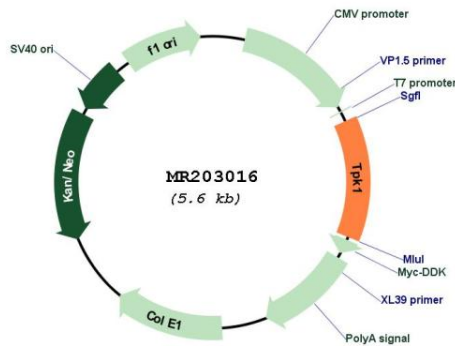
UniProt ID: [Q9R0M5](#)

Cytogenetics: 6 B2.1

MW: 27.1 kDa

Gene Summary: Catalyzes the phosphorylation of thiamine to thiamine pyrophosphate. Can also catalyze the phosphorylation of pyrithiamine to pyrithiamine pyrophosphate.[UniProtKB/Swiss-Prot Function]

Product images:



Circular map for MR203016