

Product datasheet for MR202989

Clns1a (NM_023671) Mouse Tagged ORF Clone

Product data:

Product Type: Expression Plasmids
Product Name: Clns1a (NM_023671) Mouse Tagged ORF Clone
Tag: Myc-DDK
Symbol: Clns1a
Synonyms: 2610036D06Rik; 2610100O04Rik; Clci; Clcni; ICLN
Mammalian Cell Selection: Neomycin
Vector: pCMV6-Entry (PS100001)
E. coli Selection: Kanamycin (25 ug/mL)
ORF Nucleotide Sequence: >MR202989 ORF sequence
Red=Cloning site Blue=ORF Green=Tags(s)

TTTTGTAATACGACTCACTATAGGGCGCCGGGAATTCGTCGACTGGATCCGGTACCGAGGAGATCTGCC
GCC**CGATCGCC**

ATGCTTTCCCGCAATGAGCTTCCTCAAAGCTTTCGCGCCTGGGTCGGCCGACGGGCTCCGGCTGC
AGCAGCCAGACACCGAGGCTGTGCTGAACGGGAAGGGGCTCGGCACCGGCACGCTTTACATCGCGGAGAG
CCGCCTGTCTGGTTAGATGGTTCGGGATTAGGATTCTCACTGGAATACCCACCATTAGTTTACATGCG
GTGTCCAGGGATCAAACGCTTACCCTCAAGAGCATTGTATGTTATGGTGAATGCCAAGCTTGGAGAAG
AATCAAAGAACCTCTCTGATGAAGATGAGGAAGACAATGATGATGTTGAACCATTTCTGAATTTCCG
ATTTGTGCCAGTGATAAGTCAGCATTGGAGGCGATGTTACAGCAATGTGTGAGTGCCAGGCCTTCAT
CCAGACCTGAGGATGAAGACTCGGACGACTATGATGGAGAGGAGTATGATGTGGAGGCACACGAACAAG
GACAAGGGGACATCCCTACATTTTATACCTATGAAGAAGGACTATCCCATTTAACAGCGGAAGGGCAAGC
CACGTTGGAGAGATTAGAAGGGATGCTTCTCAGTCTGTGAGCAGCCAATATAATATGCCAGGCGTCCGA
ACAGAAGACTCAGTAAGAAATTAAGAGATGGCATGGAGGTGAAACCACCAACTGTTGCCGGACAGT
TTGAGGATGCAGATGTGGATCAC

ACGCGTACGCGGCCGCTCGAGCAGAACTCATCTCAGAAGAGGATCTGGCAGCAAATGATATCCTGGATT
ACAAGGATGACGACGATAAGGTTTAA



[View online »](#)

Protein Sequence: >MR202989 protein sequence
 Red=Cloning site Green=Tags(s)

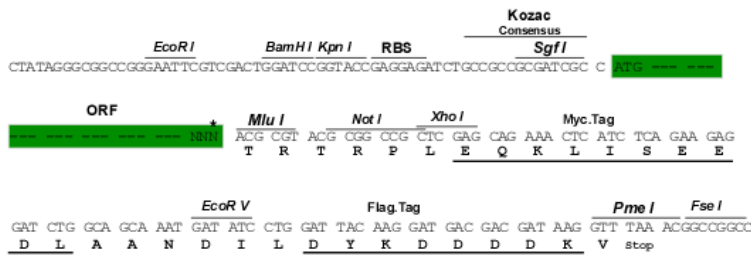
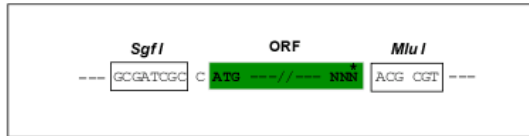
MLSPAMSFLLKSFPPPGSADGLRLQQPDTEAVLNGKGLGTGLYIAESRLSWLDGSGGLGFSLEYPTISLHA
 VSRDPNAYPQEHLVYVMNAKLGEESKEPLSDEEEDNDVVEPISEFRFVPSDKSALEAMFTAMCECQALH
 PDPEDESDDDYDGEEYDVEAHEQGQGDIPTFYTYEEGLSHLTAEGQATLERLEGLMSQSVSSQYNMAGVR
 TEDSVRNYEDGMEVETTPTVAGQFEDADVDH

TRTRPLEQKLISEEDLAANDILDYKDDDDKV

Restriction Sites: SgfI-MluI

Cloning Scheme:

Cloning sites used for ORF Shuttling:



* The last codon before the Stop codon of the ORF

ACCN: NM_023671

ORF Size: 726 bp

OTI Disclaimer: The molecular sequence of this clone aligns with the gene accession number as a point of reference only. However, individual transcript sequences of the same gene can differ through naturally occurring variations (e.g. polymorphisms), each with its own valid existence. This clone is substantially in agreement with the reference, but a complete review of all prevailing variants is recommended prior to use. [More info](#)

OTI Annotation: This clone was engineered to express the complete ORF with an expression tag. Expression varies depending on the nature of the gene.

Components: The ORF clone is ion-exchange column purified and shipped in a 2D barcoded Matrix tube containing 10ug of transfection-ready, dried plasmid DNA (reconstitute with 100 ul of water).

Reconstitution Method:

1. Centrifuge at 5,000xg for 5min.
2. Carefully open the tube and add 100ul of sterile water to dissolve the DNA.
3. Close the tube and incubate for 10 minutes at room temperature.
4. Briefly vortex the tube and then do a quick spin (less than 5000xg) to concentrate the liquid at the bottom.
5. Store the suspended plasmid at -20°C. The DNA is stable for at least one year from date of shipping when stored at -20°C.

RefSeq: [NM_023671.1](#), [NP_076160.1](#)

RefSeq Size: 3395 bp

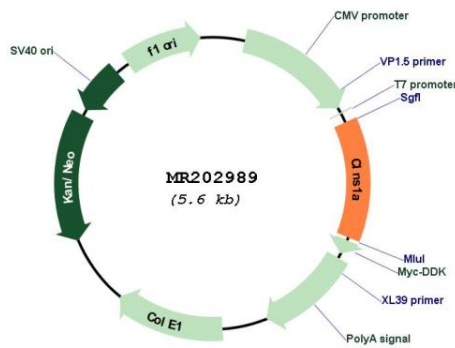
RefSeq ORF: 726 bp

Locus ID: 12729

Cytogenetics: 7 53.57 cM

MW: 26.5 kDa

Product images:



Circular map for MR202989