

## Product datasheet for MR202966

### Efhd1 (NM\_028889) Mouse Tagged ORF Clone

#### Product data:

Product Type:	Expression Plasmids
Product Name:	Efhd1 (NM_028889) Mouse Tagged ORF Clone
Tag:	Myc-DDK
Symbol:	Efhd1
Synonyms:	4931430I01Rik; AI452351; mitocalcin; PP3051
Mammalian Cell Selection:	Neomycin
Vector:	pCMV6-Entry (PS100001)
E. coli Selection:	Kanamycin (25 ug/mL)
ORF Nucleotide Sequence:	>MR202966 ORF sequence Red=Cloning site Blue=ORF Green=Tags(s)

TTTTGTAATACGACTCACTATAGGGCGGCCGGAATTCGTCGACTGGATCCGGTACCGAGGAGATCTGCC  
GCC**CGATCGCC**

ATGTCCAGCGAGGAGCTGGCCTGCAAGCTGCAGCGCCGGTTGAGACTTGAGGTGCGGGCAGAGACCGACC  
AGGGCGACCCAGCCTGCACCCTGCGATGCCCGAGCCGGGACCCGGAGCCTGAACCGCCTGCCCGGC  
GCCACAGCCAGCGGGACTCCGAACCTGAACCTCAAGCTGAGCCGAGGCTGGACATCCACCAGGGTACA  
GCGCGCCGGGCGCTCTAAGGTCTTCAATCCCTACACCGAGTCCCGGAGTTCAGCCGCCGCTCTGA  
AGGATCTGGAGAAGATGTTCAAACGTATGATGCTGGAAGGACGGCTTTATCGACTGATGGAGCTGAA  
ACTCATGATGGAGAACTGGGGGCCCTCAGACCCACCTGGGCCTGAAGAGCATGATCAAGGAGGTGGAT  
GAGGACTTCGACGGGAAGCTCAGCTTCCGGGAGTTCCTGCTCATTTCACCAAGGCTGCTGCTGGT  
TGCAGGAGGACAGTGGGTTGCTGGCACTGGCCAAGTTTTCCGAGATTGATGTCGCCCTGGAAGGTGT  
AGGTGCCAAGAATTCTTGAAGCCAAGGCCAGGCCCTTGTCATGTTCCAGTAAGTTCGAAGCTGAGTTA  
AAAGCTGAGCAAGAAGAGCGGAAACGGGAGGAGGAGGCCCGGAGGCTCCGCCAGGCAGCCTTCCGGGAGC  
TCAAGGCAGCTTTCAGCGCG

**ACGCGT**ACGCGGCCGCTCGAGCAGAACTCATCTCAGAAGAGGATCTGGCAGCAAATGATATCCTGGATT  
ACAAGGATGACGACGATAAGGTTTAA



[View online »](#)

**Protein Sequence:** >MR202966 protein sequence  
Red=Cloning site Green=Tags(s)

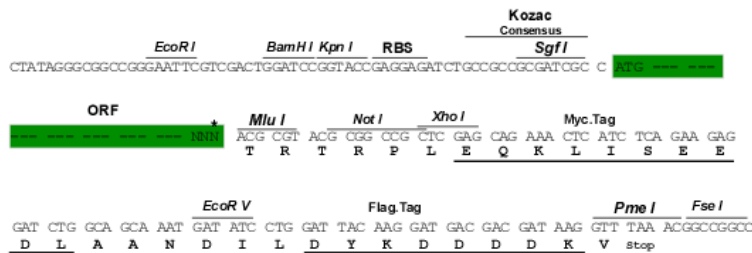
MSSEELACKLQRRRLRELVRAETDQGDQPAPCDAPAGHPEPEPPARAPTASADSELNLKLSRRLDIHQGT  
 ARPRGRSKVFNPYTEFPEFSRRLKLDLEKMFKTYDAGRDFIDLMEKLMMEKLGAPQTHLGLKSMIKEVD  
 EDFDGLKSFREFLLIFHKAAAGELQEDSGLLALAKFSEIDVALEGVRGAKNFFEAQAQALSCSSKFEAEL  
 KAEQEERKREEEARRLRQAARFRELKAAFSA

TRTRPLEQKLISEEDLAANDILDYKDDDDKV

**Restriction Sites:** SgfI-MluI

**Cloning Scheme:**

Cloning sites used for ORF Shuttling:



\* The last codon before the Stop codon of the ORF

**ACCN:** NM\_028889

**ORF Size:** 723 bp

**OTI Disclaimer:** The molecular sequence of this clone aligns with the gene accession number as a point of reference only. However, individual transcript sequences of the same gene can differ through naturally occurring variations (e.g. polymorphisms), each with its own valid existence. This clone is substantially in agreement with the reference, but a complete review of all prevailing variants is recommended prior to use. [More info](#)

**OTI Annotation:** This clone was engineered to express the complete ORF with an expression tag. Expression varies depending on the nature of the gene.

**Components:** The ORF clone is ion-exchange column purified and shipped in a 2D barcoded Matrix tube containing 10ug of transfection-ready, dried plasmid DNA (reconstitute with 100 ul of water).

**Reconstitution Method:**

1. Centrifuge at 5,000xg for 5min.
2. Carefully open the tube and add 100ul of sterile water to dissolve the DNA.
3. Close the tube and incubate for 10 minutes at room temperature.
4. Briefly vortex the tube and then do a quick spin (less than 5000xg) to concentrate the liquid at the bottom.
5. Store the suspended plasmid at -20°C. The DNA is stable for at least one year from date of shipping when stored at -20°C.

**RefSeq:** [NM\\_028889.1](#), [NM\\_028889.2](#), [NP\\_083165.1](#)

**RefSeq Size:** 1805 bp

**RefSeq ORF:** 723 bp

**Locus ID:** 98363

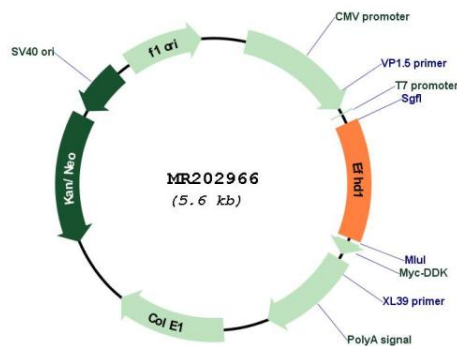
**UniProt ID:** [Q9D4J1](#)

**Cytogenetics:** 1 C5

**MW:** 27 kDa

**Gene Summary:** Acts as a calcium sensor for mitochondrial flash (mitoflash) activation, an event characterized by stochastic bursts of superoxide production (By similarity). May play a role in neuronal differentiation (PubMed:16336229).[UniProtKB/Swiss-Prot Function]

## Product images:



Circular map for MR202966