

## Product datasheet for MR202944

### Mbl1 (NM\_010775) Mouse Tagged ORF Clone

#### Product data:

Product Type:	Expression Plasmids
Product Name:	Mbl1 (NM_010775) Mouse Tagged ORF Clone
Tag:	Myc-DDK
Symbol:	Mbl1
Synonyms:	MBL-A; MBP-A; S-MBP
Mammalian Cell Selection:	Neomycin
Vector:	pCMV6-Entry (PS100001)
E. coli Selection:	Kanamycin (25 ug/mL)
ORF Nucleotide Sequence:	>MR202944 ORF sequence Red=Cloning site Blue=ORF Green=Tags(s)

TTTTGTAATACGACTCACTATAGGGCGGCCGGAATTCGTCGACTGGATCCGGTACCGAGGAGATCTGCC  
GCC**CGATCGCC**

ATGCTTCTGCTTCCATTACTCCCTGTCCTTCTGTGTGGTGAGTGTGCCTCATCAGGGTCACAAACCT  
GTGAGGACACCCTGAAGACTTGCTCTGTGATAGCCTGTGGCAGAGATGGGAGAGATGGACCCAAAGGGGA  
GAAGGGAGAACCAGGTCAAGGGCTCAGGGGCTTGAGGGCCCTCCAGGGAAATTGGGGCTCCAGGAAGT  
GTTGGAAGCCCTGGAAGTCCAGGACAAAAGGCCAAAAGGGGACCATGGAGACAATAGAGCCATTGAGG  
AGAAGCTGGCAAATATGGAGGCAGAGATAAGGATCCTGAAATCAAACCTGCAGCTAACCAACAAGTTGCA  
TGCTTCTCAATGGGCAAAAAGTCTGGGAAGAAGTTGTTGTGACCAACCATGAGAAGATGCCCTTTTCC  
AAAGTGAAGTCTCTGTGCACAGAGCTCCAAGGCACTGTGGCTATCCCCAGGAATGCTGAAGAGAACAAGG  
CCATTCAAGAAGTGGCCACAGGCATTGCCTTCTAGGCATCACGGACGAGGCGACTGAAGGGCAGTTCAT  
GTACGTGACAGGGGGGAGGCTCACCTACAGCAACTGGA AAAAGGATGAGCCAAAATAACCATGGCTCTGGG  
GAAGACTGTGTCATTATATTAGATAATGGTTTGTGGAATGACATTTCTGTCAAGCTTCTTCAAGGCTG  
TCTGCGAGTCCAGCC

**ACGCGT**ACGCGGCCGCTCGAGCAGAACTCATCTCAGAAGAGGATCTGGCAGCAAATGATATCCTGGATT  
ACAAGGATGACGACGATAAGGTTTAA



[View online »](#)

**Protein Sequence:** >MR202944 protein sequence  
 Red=Cloning site Green=Tags(s)

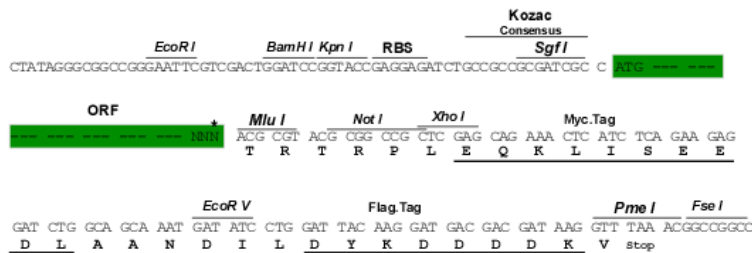
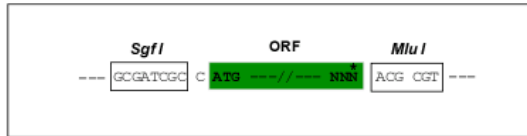
MLLLPLLPLVLLCVVSVSSSGSQTCDTLKTCSVIACGRDGRDGPKEGEPGQGLRGLQGPPGKLGPPGS  
 VGSPGSPGPKGQKGDHGDNRNRAIEEKLANMEAEIRILKSKLQLTNKLHAFSMGKKSCKLFTVNHEKMPFS  
 KVKSLCTELQGTVAIPRNAEENKAIQEVATGIAFLGITDEATEGQFMVVTGGRLTYSNWKKDEPNNHGSG  
 EDCVIIIDNGLWNDISQASFKAVCEFPA

TRTRPLEQKLISEEDLAANDILDYKDDDDKV

**Restriction Sites:** SgfI-MluI

**Cloning Scheme:**

Cloning sites used for ORF Shuttling:



\* The last codon before the Stop codon of the ORF

**ACCN:** NM\_010775

**ORF Size:** 720 bp

**OTI Disclaimer:** The molecular sequence of this clone aligns with the gene accession number as a point of reference only. However, individual transcript sequences of the same gene can differ through naturally occurring variations (e.g. polymorphisms), each with its own valid existence. This clone is substantially in agreement with the reference, but a complete review of all prevailing variants is recommended prior to use. [More info](#)

**OTI Annotation:** This clone was engineered to express the complete ORF with an expression tag. Expression varies depending on the nature of the gene.

**Components:** The ORF clone is ion-exchange column purified and shipped in a 2D barcoded Matrix tube containing 10ug of transfection-ready, dried plasmid DNA (reconstitute with 100 ul of water).

**Reconstitution Method:**

1. Centrifuge at 5,000xg for 5min.
2. Carefully open the tube and add 100ul of sterile water to dissolve the DNA.
3. Close the tube and incubate for 10 minutes at room temperature.
4. Briefly vortex the tube and then do a quick spin (less than 5000xg) to concentrate the liquid at the bottom.
5. Store the suspended plasmid at -20°C. The DNA is stable for at least one year from date of shipping when stored at -20°C.

**RefSeq:** [NM\\_010775.2](#), [NP\\_034905.1](#)

**RefSeq Size:** 923 bp

**RefSeq ORF:** 720 bp

**Locus ID:** 17194

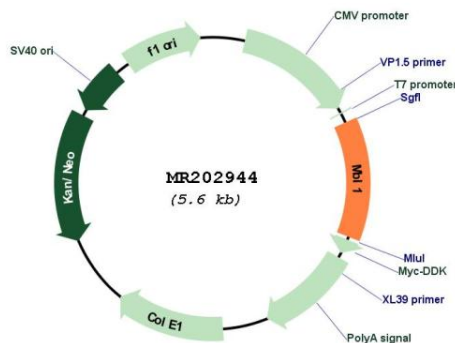
**UniProt ID:** [P39039](#)

**Cytogenetics:** 14 22.36 cM

**MW:** 25.4 kDa

**Gene Summary:** Calcium-dependent lectin. Plays a role in the innate immune response by binding mannose, fucose and N-acetylglucosamine moieties on different microorganisms and mediating activation of the lectin complement pathway (By similarity). Binds to late apoptotic cells, as well as to apoptotic blebs and to necrotic cells, but not to early apoptotic cells, facilitating their uptake by macrophages (By similarity).[UniProtKB/Swiss-Prot Function]

### Product images:



Circular map for MR202944