

## Product datasheet for MR202928

### Srsf7 (NM\_146083) Mouse Tagged ORF Clone

#### Product data:

Product Type:	Expression Plasmids
Product Name:	Srsf7 (NM_146083) Mouse Tagged ORF Clone
Tag:	Myc-DDK
Symbol:	Srsf7
Synonyms:	9G8; 35kDa; 9430065L19Rik; NX-9; NX-96; Sf; Sfrs7
Mammalian Cell Selection:	Neomycin
Vector:	pCMV6-Entry (PS100001)
E. coli Selection:	Kanamycin (25 ug/mL)
ORF Nucleotide Sequence:	>MR202928 ORF sequence Red=Cloning site Blue=ORF Green=Tags(s)

TTTTGTAATACGACTCACTATAGGGCGCCGGGAATTCGTCGACTGGATCCGGTACCGAGGAGATCTGCC  
GCC**CGATCGCC**

ATGTCACGCTACGGCGGTATGGAGGAGAAACCAAGGTATATGTTGGTAACCTGGGAACCTGGTGCTGGTA  
AAGGAGAGTTAGAAAGGGCATTCACTTACTATGGGCCCTTAAGAAGTGTGTGGATTGCCAGAAATCCTCC  
AGGATTCGCCTTTGTGGAATTTGAAGACCCTAGAGATGCAGAGGATGCAGTTCGAGGATTGGATGGGAAA  
GTGATTTGTGGTCTCGAGTGAGGGTTGAACATCAACAGGCATGCCTCGGAGATCTCGTTTTGATAGGC  
CACCTGCCCGTCGCCCTTTGATCCTAATGATAGATGCTATGAGTGTGGTAAAAGGGACATTATGCTTA  
TGAAGTGTATCGCTATAGCCGACGAAGAAGAAGCAGGTCACGATCTAGATCCCATTCCCAGTCCAGGGGA  
AGGCGATACTCTCGCTCCCGCAGCAGGACCGAGGACGGAGGTCAGATCAGCATCTCCTCGCCGATCAA  
GGTCTGTGTCTCTTCGTAGATCAAGATCAGCTTCACTCAGAAGATCTAGGTCTGGTTCTATAATAGGATC  
GAGGATTTCCAATCCCCTCAAGGTCGAGATCAAGATCCAGGTCTATTTACGACCAAGAAGCAGCCGA  
TCAAAATCCAGATCTCCATCTCTAAAAGAAGTCGTTCCCATCAGGAAGTCCACACAGAAGTCAAAGTC  
CAGAAAGAATGGAC

**ACGCGT**ACGCGGCCGCTCGAGCAGAAACTCATCTCAGAAGAGGATCTGGCAGCAAATGATATCCTGGATT  
ACAAGGATGACGACGATAAGGTTTAA



[View online »](#)

**Protein Sequence:** >MR202928 protein sequence  
 Red=Cloning site Green=Tags(s)

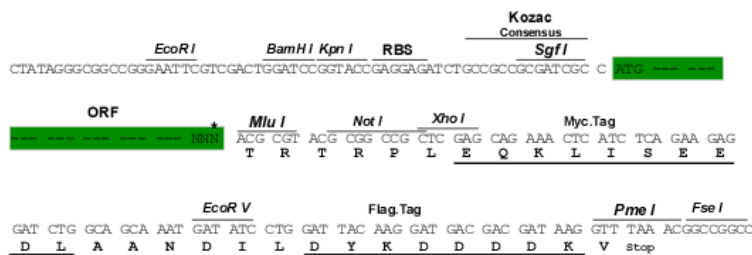
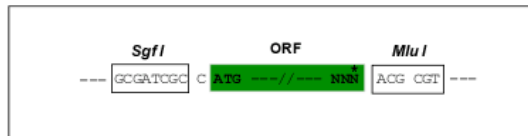
MSRYGRYGGETKVVYVGNLGTGAGKGELEAFSYGPLRTVWIARNPPGF AFVEFEDPRDAEDAVRGLDGK  
 VICGSRVRVELSTGMPRRSRFDRPPARRPFDPNDRCYECGEKGHYAYDCHRYSRRRRSRSHSRSRG  
 RRYRSRSHSRGRRRSRASPRRSRSVSLRRRSASLRRRSRSGSIIGSRYFQSRSRSRSRISRPRSSR  
 SKSRSPSPKRSPSPGSPHRASPERMD

TRTRPLEQKLISEEDLAANDILDYKDDDDKV

**Restriction Sites:** SgfI-MluI

**Cloning Scheme:**

Cloning sites used for ORF Shuttling:



\* The last codon before the Stop codon of the ORF

**ACCN:** NM\_146083

**ORF Size:** 717 bp

**OTI Disclaimer:** The molecular sequence of this clone aligns with the gene accession number as a point of reference only. However, individual transcript sequences of the same gene can differ through naturally occurring variations (e.g. polymorphisms), each with its own valid existence. This clone is substantially in agreement with the reference, but a complete review of all prevailing variants is recommended prior to use. [More info](#)

**OTI Annotation:** This clone was engineered to express the complete ORF with an expression tag. Expression varies depending on the nature of the gene.

**Components:** The ORF clone is ion-exchange column purified and shipped in a 2D barcoded Matrix tube containing 10ug of transfection-ready, dried plasmid DNA (reconstitute with 100 ul of water).

**Reconstitution Method:**

1. Centrifuge at 5,000xg for 5min.
2. Carefully open the tube and add 100ul of sterile water to dissolve the DNA.
3. Close the tube and incubate for 10 minutes at room temperature.
4. Briefly vortex the tube and then do a quick spin (less than 5000xg) to concentrate the liquid at the bottom.
5. Store the suspended plasmid at -20°C. The DNA is stable for at least one year from date of shipping when stored at -20°C.

**RefSeq:** [NM\\_146083.2](#), [NP\\_666195.1](#)

**RefSeq Size:** 2301 bp

**RefSeq ORF:** 717 bp

**Locus ID:** 225027

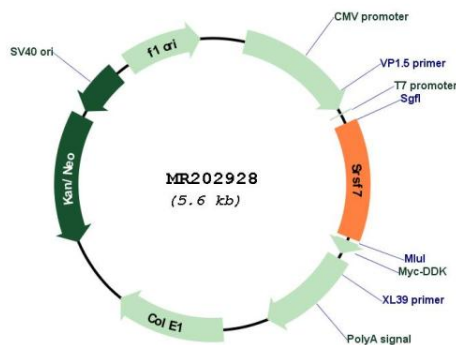
**UniProt ID:** [Q8BL97](#)

**Cytogenetics:** 17 E3

**MW:** 27.4 kDa

**Gene Summary:** The protein encoded by this gene is a member of the serine/arginine (SR)-rich family of pre-mRNA splicing factors, which constitute part of the spliceosome. Each of these factors contains an RNA recognition motif (RRM) for binding RNA and an RS domain for binding other proteins. The RS domain is rich in serine and arginine residues and facilitates interaction between different SR splicing factors. In addition to being critical for mRNA splicing, the SR proteins have also been shown to be involved in mRNA export from the nucleus and in translation. Five transcript variants, four of them protein-coding and the other not protein-coding, have been found for this gene. [provided by RefSeq, Sep 2010]

### Product images:



Circular map for MR202928