

Product datasheet for MR202916

Tmem127 (NM_175145) Mouse Tagged ORF Clone

Product data:

Product Type: Expression Plasmids
Product Name: Tmem127 (NM_175145) Mouse Tagged ORF Clone
Tag: Myc-DDK
Symbol: Tmem127
Synonyms: 2310003P10Rik; AI314202; AI317350
Mammalian Cell Selection: Neomycin
Vector: pCMV6-Entry (PS100001)
E. coli Selection: Kanamycin (25 ug/mL)
ORF Nucleotide Sequence: >MR202916 ORF sequence
Red=Cloning site Blue=ORF Green=Tags(s)

TTTTGTAATACGACTCACTATAGGGCGGCCGGAATTCGTCGACTGGATCCGGTACCGAGGAGATCTGCC
GCC**CGATCGCC**

ATGTATGCCCTGGAGGTGCCGGCTGCCGGGAGGGCGCCGGGAGAAGCCGGGAAGCAGCGCTCTTC
CCAAGCAGCCGGAGCGGAGCCTGGCCTCGGCCCTGCCTGGCGCCCTGTCCATCACAGCGCTGTGCACTGC
CCTCGCGGAGCCCGCTTGGTTGCACATCCATGGAGGCACCTGTTCCCGCCAGGAGCTGGGGTCTCGGAC
GTGCTGGGCTATGTAACCCGGATCTGCTAAAAGATTTCTGCATGAACCCAGACAGTGTCTCTCTGA
GGGTCATCGCTGCTTTCTGCTTCTGGCATCCTGTGTAGTCTCTCTGCATTCCTTTTGGATGTCTTTGG
GCCAAGCATCCAGCTCTGAAGATTACTCGTGGTATGCCTTTGCTCACATCCTCACTGTCTACAGTGT
GCTACCGTCATTGGCTTTTCTATTGGGCTTCTGAGCTCATCCTGGCCAGCAGCAACAGCATAAGAAGT
ACCACGGTCCCAAGTCTATGTCACCTTTGCTGTTAGCTTCTACTTGGTGGCAGGAGCTGGTGGAGCCTC
AATCCTGGCTACTGCAGCCAACCTCCTGCGCCACTACCCAACAGAGGAAGAAGAACAAGCACTGGAGCTA
CTATCTGAGATGGAGGAGAATGACCCCTACCCAGCAGAGTATGAGGTCATCAACCAATCCAGCCACCCC
CTGCCTATACACC

ACGCGTACGCGGCCGCTCGAGCAGAACTCATCTCAGAAGAGGATCTGGCAGCAAATGATATCCTGGATT
ACAAGGATGACGACGATAAGGTTTAA



Protein Sequence: >MR202916 protein sequence
 Red=Cloning site Green=Tags(s)

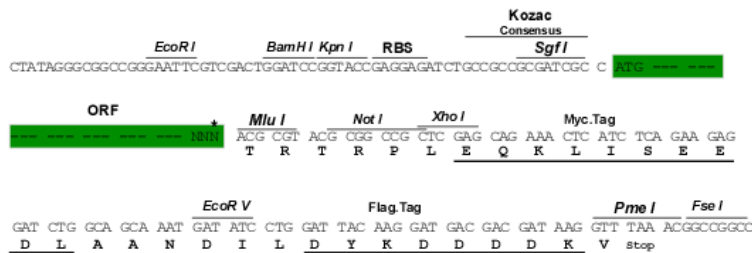
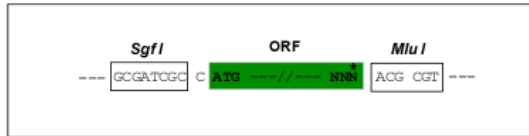
MYAPGGAGLPGRRRRSPGSSALPKQPERSLASALPGALSITALCTALAEPAWLHIHGTCRSRQELGVSD
 VLGYYNPDLLKDFCMNPQTVLLLRVIAAF CFLGILCSLSAFLLDVFGPKHPALKITRRYAF AHILTVLQC
 ATVIGFSYWASELILAQQQHKYHGSQVYVTF AVSFYLVAGAGGASILATAANLLRHYPTEEEEQALEL
 LSEMEENDPYPAEYEVINQFPPPAYTP

TRTRPLEQKLISEEDLAANDILDYKDDDDKV

Restriction Sites: SgfI-MluI

Cloning Scheme:

Cloning sites used for ORF Shuttling:



* The last codon before the Stop codon of the ORF

ACCN: NM_175145

ORF Size: 717 bp

OTI Disclaimer: The molecular sequence of this clone aligns with the gene accession number as a point of reference only. However, individual transcript sequences of the same gene can differ through naturally occurring variations (e.g. polymorphisms), each with its own valid existence. This clone is substantially in agreement with the reference, but a complete review of all prevailing variants is recommended prior to use. [More info](#)

OTI Annotation: This clone was engineered to express the complete ORF with an expression tag. Expression varies depending on the nature of the gene.

Components: The ORF clone is ion-exchange column purified and shipped in a 2D barcoded Matrix tube containing 10ug of transfection-ready, dried plasmid DNA (reconstitute with 100 ul of water).

Reconstitution Method:

1. Centrifuge at 5,000xg for 5min.
2. Carefully open the tube and add 100ul of sterile water to dissolve the DNA.
3. Close the tube and incubate for 10 minutes at room temperature.
4. Briefly vortex the tube and then do a quick spin (less than 5000xg) to concentrate the liquid at the bottom.
5. Store the suspended plasmid at -20°C. The DNA is stable for at least one year from date of shipping when stored at -20°C.

RefSeq: [NM_175145.4](#)

RefSeq Size: 4401 bp

RefSeq ORF: 717 bp

Locus ID: 69470

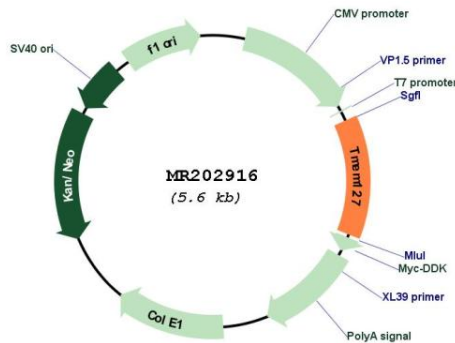
UniProt ID: [Q8BGP5](#)

Cytogenetics: 2 61.87 cM

MW: 25.8 kDa

Gene Summary: Controls cell proliferation acting as a negative regulator of TOR signaling pathway mediated by mTORC1. May act as a tumor suppressor.[UniProtKB/Swiss-Prot Function]

Product images:



Circular map for MR202916