

## Product datasheet for MR202889

### Chpt1 (BC031435) Mouse Tagged ORF Clone

#### Product data:

Product Type: Expression Plasmids  
 Product Name: Chpt1 (BC031435) Mouse Tagged ORF Clone  
 Tag: Myc-DDK  
 Symbol: Chpt1  
 Synonyms: MGC28885  
 Mammalian Cell Selection: Neomycin  
 Vector: pCMV6-Entry (PS100001)  
 E. coli Selection: Kanamycin (25 ug/mL)  
 ORF Nucleotide Sequence: >MR202889 ORF sequence  
 Red=Cloning site Blue=ORF Green=Tags(s)

TTTTGTAATACGACTCACTATAGGGCGGCCGGAATTCGTCGACTGGATCCGGTACCGAGGAGATCTGCC  
 GCCCGATCGCC

ATGGCGGCGGGCGCCGGGGCCAGGCCGGCGCCGCTGGGTAAAGGCGCTAGGTGAGCCGCTCAGTGCCG  
 CGCAGCTGCGGCGGCTGGAGGAGCACCGCTACCCGCGGTGGGAGAGTCGCTGTTTCGAGCCGCCGCTGCA  
 GCTTTACTGGACCTGGCTGCTCCAATGGATCCCGCTCTGGATGGCCCCAACACCATCACCTCATCGGC  
 CTCGCCATCAACCTGGTCAACACTAGTGCTCATCTTCTACTGCCCTACAGTCACGGAGGAGGCACCAT  
 ACTGGACATACCTTTTATGTGCCCTGGGACTCTTTATCTACCAGTCACTGGATGCCATTGATGGGAAACA  
 AGCCAGAAGGACAACTCTTGTCTCCCTTAGGGGAACTATTTGATCATGGTTGTGACTCTTTCCACA  
 GTATTTATGGCCATCGGCGCTTCCATTGCTGTTTCGCTAGGAACACATCCTGACTGGTTGTTTTCTGCT  
 CTTTCGTTGGGATGTTTACTGTGCTCATTGGCAGACTTACGTCTCAGGAGTGTAAAGATTTGG  
 AAGTCAAGAAGTTTTCTCCGGGCTGGTGGAGATGGCTCAGTGGGTAAAGAGCACCCGACTGCTCTTCTGAA  
 GGTCCAGAGTTCAAATCCCAGCAACCACATGGTGGATCACAACCATCTGTAACAAGATCTGACGCCCTCT  
 TCTGGAGTGTC

ACGCGTACGCGGCGGCTCGAGCAGAACTCATCTCAGAAGAGGATCTGGCAGCAAATGATATCCTGGATT  
 ACAAGGATGACGACGATAAGGTTTAA



[View online »](#)

**Protein Sequence:** >MR202889 protein sequence  
Red=Cloning site Green=Tags(s)

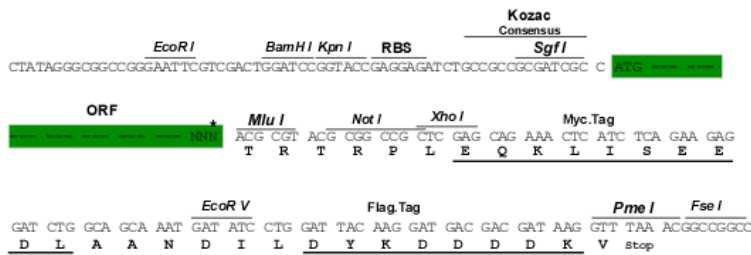
MAAGAGARPAPRWVKALGEPLSAAQLRRLEEHRYSVAVGESLFEPPLQLYWTWLLQWIPLWMPNTITLIG  
 LAINLVTTLVLFYCPVTVEEAPYWTYLLCALGLFIYQSLDAIDGKQARRTNSCSPLGELFDHGCDLSLST  
 VFMAIGASIAVRLGTHPDWLFVCSFVGMFMFYCAHWQTYVSGVLRFGSQEVFFRAGEMAQWVRAPDCSSE  
 GPEFKSQPHGGSQPSVTRSDALFWSV

TRTRPLEQKLISEEDLAANDILDYKDDDDKV

**Restriction Sites:** SgfI-MluI

**Cloning Scheme:**

Cloning sites used for ORF Shuttling:



\* The last codon before the Stop codon of the ORF

**ACCN:** BC031435

**ORF Size:** 711 bp

**OTI Disclaimer:** The molecular sequence of this clone aligns with the gene accession number as a point of reference only. However, individual transcript sequences of the same gene can differ through naturally occurring variations (e.g. polymorphisms), each with its own valid existence. This clone is substantially in agreement with the reference, but a complete review of all prevailing variants is recommended prior to use. [More info](#)

**OTI Annotation:** This clone was engineered to express the complete ORF with an expression tag. Expression varies depending on the nature of the gene.

**Components:** The ORF clone is ion-exchange column purified and shipped in a 2D barcoded Matrix tube containing 10ug of transfection-ready, dried plasmid DNA (reconstitute with 100 ul of water).

**Reconstitution Method:**

1. Centrifuge at 5,000xg for 5min.
2. Carefully open the tube and add 100ul of sterile water to dissolve the DNA.
3. Close the tube and incubate for 10 minutes at room temperature.
4. Briefly vortex the tube and then do a quick spin (less than 5000xg) to concentrate the liquid at the bottom.
5. Store the suspended plasmid at -20°C. The DNA is stable for at least one year from date of shipping when stored at -20°C.

**RefSeq:** [BC031435](#), [AAH31435](#)

**RefSeq Size:** 843 bp

**RefSeq ORF:** 713 bp

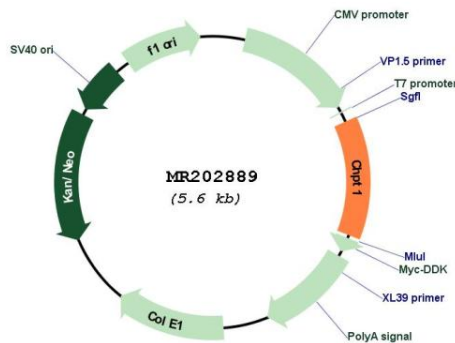
**Locus ID:** 212862

**Cytogenetics:** 10 C1

**MW:** 26.5 kDa

**Gene Summary:** Catalyzes phosphatidylcholine biosynthesis from CDP-choline. It thereby plays a central role in the formation and maintenance of vesicular membranes (By similarity).[UniProtKB/Swiss-Prot Function]

**Product images:**



Circular map for MR202889