

## Product datasheet for **MR202887**

### BC055906 Mouse Tagged ORF Clone

#### Product data:

Product Type: Expression Plasmids  
Product Name: BC055906 Mouse Tagged ORF Clone  
Tag: Myc-DDK  
Mammalian Cell Selection: Neomycin  
Vector: pCMV6-Entry (PS100001)  
E. coli Selection: Kanamycin (25 ug/mL)  
ORF Nucleotide Sequence: >MR202887 ORF sequence  
Red=Cloning site Blue=ORF Green=Tags(s)

TTTTGTAATACGACTCACTATAGGGCGCCGGGAATTCGTCGACTGGATCCGGTACCGAGGAGATCTGCC  
GCC**CGATCGCC**

ATGGACATGAGGGCCCTGCTCAGTTTTTTGGGATCTTGTGCTCTGGTTCCAGGTATCAGATGTGACA  
TCAAGATGACCCAGTCTCCATCCTCCATGTATGCATCGCTGGGAGAGAGAGTCACTATCACTTGCAAGGC  
GAGTCAGGACATTAAGCTATTTAAGCTGGTACCAGCAGAAACCATGAAATCTCCTAAGACCCTGATC  
TATTATGCAACAAGCTTGGCAGATGGGGTCCCATCAAGATTCAGTGGCAGTGGATCTGGCAAGATTATT  
CTCTAACCATCAGCAGCCTGGAGTCTGACGATACAGCAACTTATTACTGTCTACAGCATGGTGGAGAGCC  
GTATACGTTCCGATCGGGGACCAAGCTGAAATAAAACGGGCTGATGCTGCACCAACTGTATCCATCTTC  
CCACCATCCAGTGAAGTAAACATCTGGAGGTGCCTCAGTCGTGTGCTTCTTGAACAACCTCTACCCCA  
AAGACATCAATGTCAAGTGAAGATTGATGGCAGTGAACGACAAAATGGCGTCTTGAACAGTTGGACTGA  
TCAGGACAGCAAAGACAGCACCTACAGCATGAGCAGCACCCCTCACGTTGACCAAGGACGAGTATGAACGA  
CATAACAGCTATACCTGTGAGGCCACTACAAGACATCAACTTCACCCATCGTCAAGAGCTTCAACAGGA  
ATGAGTGT

**ACGCGT**ACGCGGCCGCTCGAGCAGAACTCATCTCAGAAGAGGATCTGGCAGCAAATGATATCCTGGATT  
ACAAGGATGACGACGATAAGGTTTAA

#### Protein Sequence:

>MR202887 protein sequence  
Red=Cloning site Green=Tags(s)

MDMRAPAQFFGILLWFPGRICDIKMTQSPSSMYASLGERVTITCKASQDIKSYLSWYQQKPKWSPKTLI  
YYATSLADGVPSRFSGSGSQDYSLTISLESDDTATYYCLQHGESPYTFGSGTKLEIKRADAAPTYSIF  
PPSSEQLTSGGASVVCFLNMFYPKDINVKWKIDGSRQNGVLNSWTDQDSKDYMSSTLTLTKDEYER  
HNSYTCETHKTSPIVKSFNREK

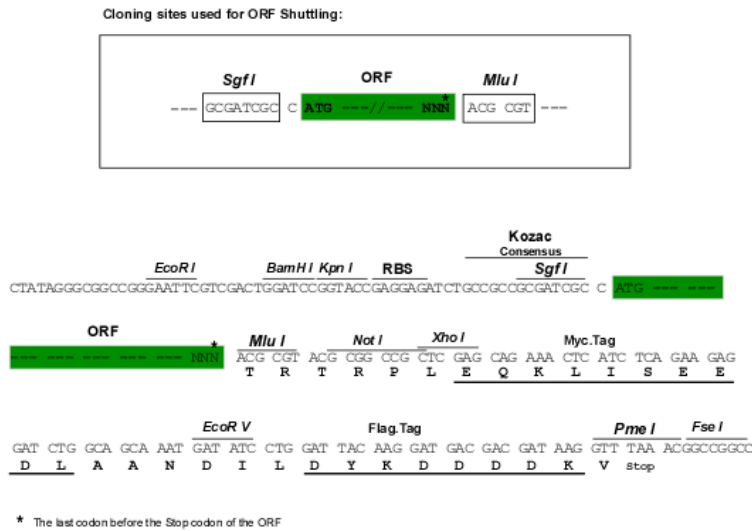
**TR**TRPLEQKLISEEDLAANDILDYKDDDDKV



[View online »](#)

Restriction Sites: SgfI-MluI

Cloning Scheme:



ACCN: BC055906

ORF Size: 708 bp

OTI Disclaimer: The molecular sequence of this clone aligns with the gene accession number as a point of reference only. However, individual transcript sequences of the same gene can differ through naturally occurring variations (e.g. polymorphisms), each with its own valid existence. This clone is substantially in agreement with the reference, but a complete review of all prevailing variants is recommended prior to use. [More info](#)

OTI Annotation: This clone was engineered to express the complete ORF with an expression tag. Expression varies depending on the nature of the gene.

Components: The ORF clone is ion-exchange column purified and shipped in a 2D barcoded Matrix tube containing 10ug of transfection-ready, dried plasmid DNA (reconstitute with 100 ul of water).

Reconstitution Method:

1. Centrifuge at 5,000xg for 5min.
2. Carefully open the tube and add 100ul of sterile water to dissolve the DNA.
3. Close the tube and incubate for 10 minutes at room temperature.
4. Briefly vortex the tube and then do a quick spin (less than 5000xg) to concentrate the liquid at the bottom.
5. Store the suspended plasmid at -20°C. The DNA is stable for at least one year from date of shipping when stored at -20°C.

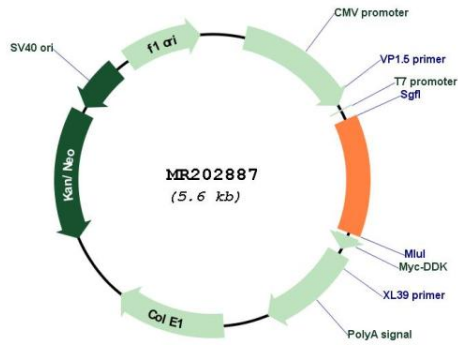
RefSeq: [BC055906](#)

RefSeq Size: 960 bp

RefSeq ORF: 710 bp

MW: 26.3 kDa

Product images:



Circular map for MR202887