

## Product datasheet for MR202873

### Rage (BC087925) Mouse Tagged ORF Clone

#### Product data:

Product Type:	Expression Plasmids
Product Name:	Rage (BC087925) Mouse Tagged ORF Clone
Tag:	Myc-DDK
Symbol:	Rage
Synonyms:	MGC46883, MOK, RAGE1
Mammalian Cell Selection:	Neomycin
Vector:	pCMV6-Entry (PS100001)
E. coli Selection:	Kanamycin (25 ug/mL)
ORF Nucleotide Sequence:	>MR202873 representing BC087925 Red=Cloning site Blue=ORF Green=Tags(s)

TTTTGTAATACGACTCACTATAGGGCGGCCGGAATTCGTCGACTGGATCCGGTACCGAGGAGATCTGCC  
GCC**CGATCGCC**

ATGAAGAGGAGAAGACCCATTATCAGAGAAAAAGATTATGCTCTACATGTATCAGCTGTGCAAATCGC  
TGGACCACATGCACAGAAACGGGATCTTTCACAGAGACGTGAAGCCGGAGAATATCCTAGTAAAGCAGGA  
TGTCTGAAACTAGGGGACTTCGGGTATGCCGGAGTGTCTATTCCAAGCAGCCCTACACAGAGTACATC  
TCTACCCGGTGGTACCGGGCCCCAGAGTGTCTCCTCACCGACGGGTTCTACACATAACAAGATGGACCTGT  
GGAGCGCTGGCTGCGTGTCTACGAGATTGCCAGGGCAGCTGAGACACAGACCCTGGCCAAACACAGAAG  
AGCTTTCTGTCCCAAGTTCTCCATGGTGCCAGAATCATCCAGTCACAACCTGGTCATTCTCACAGGAAGGC  
AGAAAGCAGAAACAGTCCCTGCGGCACGAGGAGGGCCATGCCAGACGACAGGGGCCGACCAGCTTGATGG  
AGCTTCCCAAACAGGGCTGTCGGGAATGACCAAACCTGTCATCATGTTCCAGCCCTGCACTGCGGTGAGT  
GCTGGGCACTGGAGCAAATGGAAAAGTCCCTGTGCTGAGACCCCTGAAGTGTGCTGTGTGAACAAGAAG  
ACAGACACGCAGAAGGACATCAAACCTCACCTGAAACACTATCACCTGCCACGATCAACAGGAAAGGGG  
CGAATAC

**ACGCGT**ACGCGGCCGCTCGAGCAGAAACTCATCTCAGAAGAGGATCTGGCAGCAAATGATATCCTGGATT  
ACAAGGATGACGACGATAAGGTTTAA



[View online »](#)

**Protein Sequence:** >MR202873 representing BC087925  
Red=Cloning site Green=Tags(s)

MKRRRHPLSEKKIMLYMYQLCKSLDHMRNGIFHRDVKPENILVKQDVLKLGDFGSCRSVYSKQPYTEYI  
 STRWYRAPECLLTDGFYTYKMDLWSAGCVFYEIARAAETQTLAKHRRAFCPKFSMVPESSSHNSFSQEG  
 RKQKQSLRHEEGHARRQGPTSLMELPKLRLSGMTKLSSCSSPALRSVLGTGANGKVPVLRPLKCAAVNKK  
 TDTQKDIKPHLKHYHLPTINRKGGEY

TRTRPLEQKLISEEDLAANDILDYKDDDDKV

**Chromatograms:** [https://cdn.origene.com/chromatograms/mm9034\\_e06.zip](https://cdn.origene.com/chromatograms/mm9034_e06.zip)

**Restriction Sites:** SgfI-MluI

**Cloning Scheme:**



**ACCN:** BC087925

**ORF Size:** 708 bp

**OTI Disclaimer:** The molecular sequence of this clone aligns with the gene accession number as a point of reference only. However, individual transcript sequences of the same gene can differ through naturally occurring variations (e.g. polymorphisms), each with its own valid existence. This clone is substantially in agreement with the reference, but a complete review of all prevailing variants is recommended prior to use. [More info](#)

**OTI Annotation:** This clone was engineered to express the complete ORF with an expression tag. Expression varies depending on the nature of the gene.

**Components:** The ORF clone is ion-exchange column purified and shipped in a 2D barcoded Matrix tube containing 10ug of transfection-ready, dried plasmid DNA (reconstitute with 100 ul of water).

**Reconstitution Method:**

1. Centrifuge at 5,000xg for 5min.
2. Carefully open the tube and add 100ul of sterile water to dissolve the DNA.
3. Close the tube and incubate for 10 minutes at room temperature.
4. Briefly vortex the tube and then do a quick spin (less than 5000xg) to concentrate the liquid at the bottom.
5. Store the suspended plasmid at -20°C. The DNA is stable for at least one year from date of shipping when stored at -20°C.

**RefSeq:** [BC087925.1](#)

**RefSeq Size:** 1161 bp

**RefSeq ORF:** 710 bp

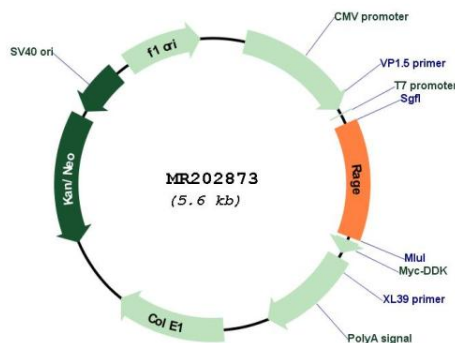
**Locus ID:** 26448

**Cytogenetics:** 12 F1

**MW:** 42.6 kDa

**Gene Summary:** Able to phosphorylate several exogenous substrates and to undergo autophosphorylation (PubMed:10421840). Negatively regulates cilium length in a cAMP and mTORC1 signaling-dependent manner (PubMed:25243405).[UniProtKB/Swiss-Prot Function]

**Product images:**



Circular map for MR202873