

Product datasheet for **MR202868**

Rpia (BC053526) Mouse Tagged ORF Clone

Product data:

Product Type: Expression Plasmids
Product Name: Rpia (BC053526) Mouse Tagged ORF Clone
Tag: Myc-DDK
Symbol: Rpia
Synonyms: RPI
Vector: pCMV6-Entry (PS100001)
E. coli Selection: Kanamycin (25 ug/mL)
Cell Selection: Neomycin
ORF Nucleotide Sequence: >MR202868 representing BC053526
Red=Cloning site Blue=ORF Green=Tags(s)

TTTTGTAATACGACTCACTATAGGGCGCCGGGAATTCGTCGACTGGATCCGGTACCGAGGAGATCTGCC
GCC**GCGATCGCC**

ATGTCCAAGGCCGAGGAGGCTAAGAAGCTGGCGAGCCACACGGCGGTGGAGAACCACGTGAAGAATAACC
AAGTGCTGGGAATTGGAAGTGGTTCTACAATTGCCACGCTGTGCAGCGAATAGCTGAAAGAGTGAAGCA
AGAGAATCTGGACCTCATCTGCATCCCCACATCTTCCAGGCCAGGCAGCTTATCTTGCAGTATGGCTTA
ACCCTCAGTGACCTGGATCAACACCCAGAGATTGACCTTGCCATCGATGGTGCTGACGAAGTGGATGCTG
AGCTCAATCTCATCAAGGTGGAGGAGGCTGCCTGACCCAGGAGAAGATCGTGGCTGGTTATGCAAGTCG
TTTCATTGTGATTGCTGATTTCCAGGAAAGATCAAGAACCTCGGGGATCGGTGGCACAAGGGGATTCCC
ATTGAAGTCATCCCAATGGCCTACGTCCCAGTGAGCCGGGCTGTGGCCAGAAGTTTGGGGTGAGGTGG
AACTTCGAATGGCTGTCAACAAGGCAGGGCCAGTGGTGACGGATAACGGGAATTTATCCTGGACTGGAA
GTTTGACCGGGTGCATAAATGGAGTGAAGTGAACACAGCTATCAAATGACTCCAGGCCTGGTGGACACA
GGCCTTTTCATCAACATGGCAGAGAGAGTCTACTTTGGGATGCAGGATGGCTCAGTGAACGTGCGGGAGA
AGCCCTTC

ACGCGTACGCGGCCGCTCGAGCAGAAACTCATCTCAGAAGAGGATCTGGCAGCAAATGATATCCTGGATT
ACAAGGATGACGACGATAAGGTTTAA

Restriction Sites: SgfI-MluI

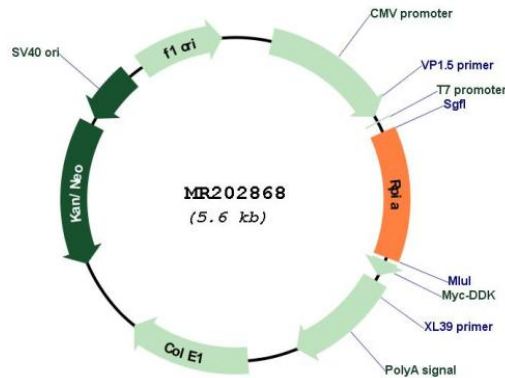


[View online »](#)

Cloning Scheme:



Plasmid Map:



ACCN: BC053526

ORF Size: 708 bp

OTI Disclaimer:	The molecular sequence of this clone aligns with the gene accession number as a point of reference only. However, individual transcript sequences of the same gene can differ through naturally occurring variations (e.g. polymorphisms), each with its own valid existence. This clone is substantially in agreement with the reference, but a complete review of all prevailing variants is recommended prior to use. More info
OTI Annotation:	This clone was engineered to express the complete ORF with an expression tag. Expression varies depending on the nature of the gene.
Components:	The ORF clone is ion-exchange column purified and shipped in a 2D barcoded Matrix tube containing 10ug of transfection-ready, dried plasmid DNA (reconstitute with 100 ul of water).
Reconstitution Method:	<ol style="list-style-type: none"> 1. Centrifuge at 5,000xg for 5min. 2. Carefully open the tube and add 100ul of sterile water to dissolve the DNA. 3. Close the tube and incubate for 10 minutes at room temperature. 4. Briefly vortex the tube and then do a quick spin (less than 5000xg) to concentrate the liquid at the bottom. 5. Store the suspended plasmid at -20°C. The DNA is stable for at least one year from date of shipping when stored at -20°C.
RefSeq:	BC053526 , AAH53526
RefSeq Size:	1617 bp
RefSeq ORF:	710 bp
Locus ID:	19895
Cytogenetics:	6 32.06 cM
MW:	59.3 kDa