

## Product datasheet for MR202839

### 2310004L02Rik (BC024867) Mouse Tagged ORF Clone

#### Product data:

Product Type:	Expression Plasmids
Product Name:	2310004L02Rik (BC024867) Mouse Tagged ORF Clone
Tag:	Myc-DDK
Symbol:	2310004L02Rik
Synonyms:	2310004L02Rik; C030044E10Rik
Mammalian Cell Selection:	Neomycin
Vector:	pCMV6-Entry (PS100001)
E. coli Selection:	Kanamycin (25 ug/mL)
ORF Nucleotide Sequence:	>MR202839 ORF sequence Red=Cloning site Blue=ORF Green=Tags(s)

TTTTGTAATACGACTCACTATAGGGCGGCCGGAATTCGTCGACTGGATCCGGTACCGAGGAGATCTGCC  
GCC**CGATCGCC**

ATGAGTGAGTTGGTGACCCCGGACAGCAGTCGGGAGAAGAAAAGAACGCTGTTGCAGTTCCTCTCAGATC  
ATTTCCAGGACATCCAGACTCTGAGAGAGTACTTGCTCCAGAAACAGATCTCAAAGTCAACAGGGAGAA  
TCGATCCTTCACTAACATCCAGGAGAAATATGGCCGTATGTTGCAGGTGCTGTCTTCATCTGAAGCAG  
GGAGGCGCAGTGAAGTTTCAGGACAAGGAGGAATGGATCCGCCAAATAACCGTAGCCATTTCTCGCCG  
AGATTCAGAAGTCCAGAATGTGCCTGTGGAGGCTGTGGATGCCAGTGGCTGTGCCATCAACTACCAGGG  
CCTGAGTAACCTCTTGCCCTGAAGGAGCTGCGGTCCCTGTCCCTGCAGCGCTGCCCAACCTGGACGAC  
TGGTGCCTCAGCCGCTCTACCTATTGGCTGGCTCACTGCAGGAGCTCTCGCTGGCTGGCTGCCCCAGAA  
TCTCAGAACGGGGCCTTGCCCTGCCTCCACCACCTCCAGAACCTCCGCAGGCTGGACATCTCAGACCTCCC  
TGCCGTGTCCCACCCAGGTCTCACTCAGATCCTGGTGAAGAGATGTTGCCCACTGTGAGGTCTTGGAA  
GCTGACTGGGCCAGAATCTCAAGCTGGAACCAGACAAGCAGCCTCCAGACACATCTACCCCTCTCTT  
CC

**ACGCGT**ACGCGGCCGCTCGAGCAGAACTCATCTCAGAAGAGGATCTGGCAGCAAATGATATCCTGGATT  
ACAAGGATGACGACGATAAGGTTTAA



[View online »](#)

**Protein Sequence:** >MR202839 protein sequence  
Red=Cloning site Green=Tags(s)

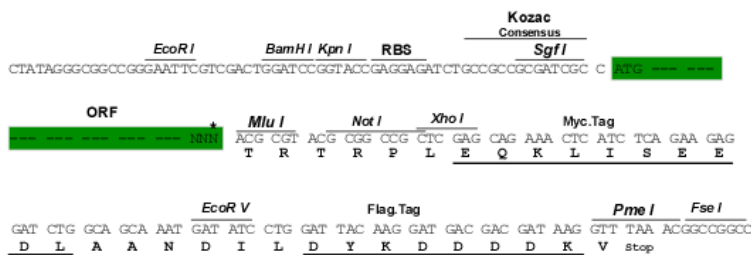
MSELVTPDSSREKKRLLQLFLSDHFQDIQTLREYLLQKQISKVNRENRSFTNIQEKYGPYVAGAVFILKQ  
 GGAVKFQDKEEWIRPNNRSHFLAEIQKFQNPVEAVDASGCAINYQGLSNLLPLKELRSLSLQRCPNLDD  
 WCL SRL YLLAGSLQELSLAGCPRI SERGLACLHHLQNLRRLDISDLPVSHPLTQILVEEMLPHCEVLG  
 ADWAQNLKLEPDKQPPDTSTPLSS

TRTRPLEQKLISEEDLAANDILDYKDDDDKV

**Restriction Sites:** Sgfl-MluI

**Cloning Scheme:**

Cloning sites used for ORF Shuttling:



**ACCN:** BC024867

**ORF Size:** 702 bp

**OTI Disclaimer:** The molecular sequence of this clone aligns with the gene accession number as a point of reference only. However, individual transcript sequences of the same gene can differ through naturally occurring variations (e.g. polymorphisms), each with its own valid existence. This clone is substantially in agreement with the reference, but a complete review of all prevailing variants is recommended prior to use. [More info](#)

**OTI Annotation:** This clone was engineered to express the complete ORF with an expression tag. Expression varies depending on the nature of the gene.

**Components:** The ORF clone is ion-exchange column purified and shipped in a 2D barcoded Matrix tube containing 10ug of transfection-ready, dried plasmid DNA (reconstitute with 100 ul of water).

**Reconstitution Method:**

1. Centrifuge at 5,000xg for 5min.
2. Carefully open the tube and add 100ul of sterile water to dissolve the DNA.
3. Close the tube and incubate for 10 minutes at room temperature.
4. Briefly vortex the tube and then do a quick spin (less than 5000xg) to concentrate the liquid at the bottom.
5. Store the suspended plasmid at -20°C. The DNA is stable for at least one year from date of shipping when stored at -20°C.

**RefSeq:** [BC024867](#), [AAH24867](#)

**RefSeq Size:** 1436 bp

**RefSeq ORF:** 704 bp

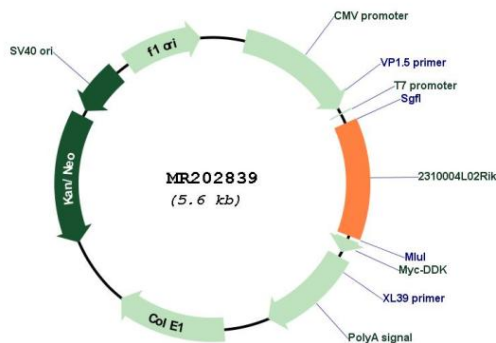
**Locus ID:** 66349

**Cytogenetics:** 7 A3

**MW:** 26.5 kDa

**Gene Summary:** Required for the assembly of the mitochondrial NADH:ubiquinone oxidoreductase complex (complex I). Involved in the assembly of the distal region of complex I.[UniProtKB/Swiss-Prot Function]

**Product images:**



Circular map for MR202839