

Product datasheet for MR202827

Kctd5 (NM_027008) Mouse Tagged ORF Clone

Product data:

Product Type:	Expression Plasmids
Product Name:	Kctd5 (NM_027008) Mouse Tagged ORF Clone
Tag:	Myc-DDK
Symbol:	Kctd5
Synonyms:	2610030N08Rik; mKIAA0176
Mammalian Cell Selection:	Neomycin
Vector:	pCMV6-Entry (PS100001)
E. coli Selection:	Kanamycin (25 ug/mL)
ORF Nucleotide Sequence:	>MR202827 ORF sequence Red=Cloning site Blue=ORF Green=Tags(s)

TTTTGTAATACGACTCACTATAGGGCGGCCGGAATTCGTCGACTGGATCCGGTACCGAGGAGATCTGCC
GCC**CGATCGCC**

ATGGCGGAGAATCACTGCGAGCTGCTGCCCGCGCTCCGAGCGGCTCGGGCGGGGCTGGGGGGCGGCC
TGTGCCGCGCTGCAGCGCTGGGATGGGCGCCCTGGCTCAGCGCCCCGGTGGCGTGTCCAAGTGGGTCCG
GCTCAACGTCGGCGGCACCTACTTCTCACCACCCGGCAGACGCTGTGCCGGACCCGAAGTCTTTCCTG
TACCGCTTGTGCCAGGCGACCCCGACCTAGATTCGGACAAGGATGAAACGGGTGCCTATTTAATCGACA
GAGATCCACCTACTTTGGACCTGACTGAACTACTTGAGACATGAAAGCTGGTTATTAACAAAGACCT
CGCAGAGGAAGGAGTGTGGAAGAAGCAGAATTTACAATATCACCTACTAATAAAACTGTAAAGGAC
AAAATTAGAGAACGAGACAGCAGAATATCGCAGATGCCAGTGAAGCATGTGTACCGTGTGCTGCAGTGCC
AGGAGGAGGAGCTCACACAGATGGTATCCACAATGTCAGACGGCTGGAAGTTTGAGCAGCTGGTCAGCAT
TGGCTCCTCTTACAACATGGAATGAAGACCAGGCTGAGTTCCTCTGTGTGGTTTCCAAGGAGCTGCAC
AACACTCCATACGGCACAACCAAGTGAGCCAAGCGAGAAAGCCAAGATTTGCAAGAACGGGGCTCAAGGA
TG

ACGCGTACGCGGCCGCTCGAGCAGAACTCATCTCAGAAGAGGATCTGGCAGCAAATGATATCCTGGATT
ACAAGGATGACGACGATAAGGTTTAA



[View online »](#)

Protein Sequence: >MR202827 protein sequence
 Red=Cloning site Green=Tags(s)

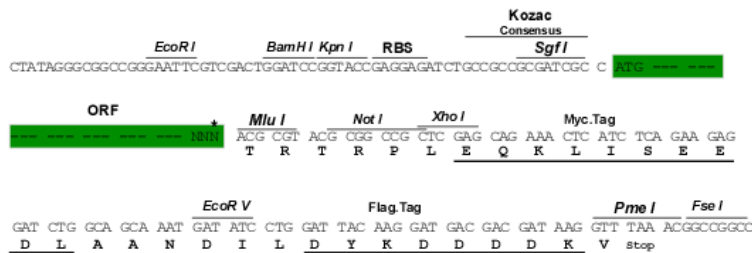
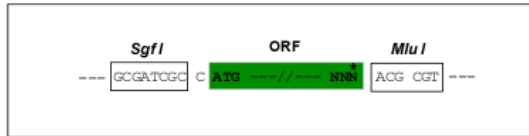
MAENHCELLPPAPSGLGAGLGGGLCRRCSSAGMGALAQRPGGVSKWVRLNVGGTYFLTTRQTLCRDPKSFL
 YRLCQADPDLDSKDETGAYLIDRDPTYFGPVLNYLRHGKLVINKDLAEEGVLEEAFYNIITSLIKLVKD
 KIRERDSRISQMPVKHVYRVLQCQEEELTQMVSTMSDGWKFQELVSISSYNYGNEDQAEFLCVVSKELH
 NTPYGGTSEPSEKAKILQERGSRM

TRTRPLEQKLISEEDLAANDILDYKDDDDKV

Restriction Sites: SgfI-MluI

Cloning Scheme:

Cloning sites used for ORF Shuttling:



* The last codon before the Stop codon of the ORF

ACCN: NM_027008

ORF Size: 705 bp

OTI Disclaimer: The molecular sequence of this clone aligns with the gene accession number as a point of reference only. However, individual transcript sequences of the same gene can differ through naturally occurring variations (e.g. polymorphisms), each with its own valid existence. This clone is substantially in agreement with the reference, but a complete review of all prevailing variants is recommended prior to use. [More info](#)

OTI Annotation: This clone was engineered to express the complete ORF with an expression tag. Expression varies depending on the nature of the gene.

Components: The ORF clone is ion-exchange column purified and shipped in a 2D barcoded Matrix tube containing 10ug of transfection-ready, dried plasmid DNA (reconstitute with 100 ul of water).

Reconstitution Method:

1. Centrifuge at 5,000xg for 5min.
2. Carefully open the tube and add 100ul of sterile water to dissolve the DNA.
3. Close the tube and incubate for 10 minutes at room temperature.
4. Briefly vortex the tube and then do a quick spin (less than 5000xg) to concentrate the liquid at the bottom.
5. Store the suspended plasmid at -20°C. The DNA is stable for at least one year from date of shipping when stored at -20°C.

RefSeq: [NM_027008.1](#), [NP_081284.1](#)

RefSeq Size: 2457 bp

RefSeq ORF: 705 bp

Locus ID: 69259

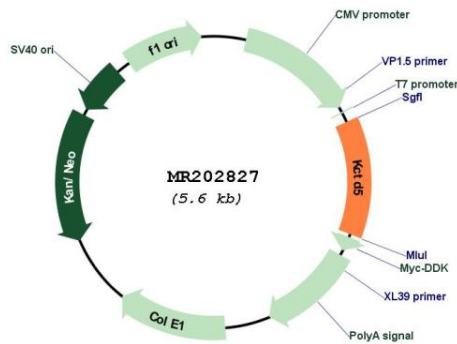
UniProt ID: [Q8VC57](#)

Cytogenetics: 17 A3.3

MW: 26.2 kDa

Gene Summary: Its interaction with CUL3 suggests that it may act as a substrate adapter in some E3 ligase complex (By similarity). Does not affect the function of Kv channel Kv2.1/KCNB1, Kv1.2/KCNA2, Kv4.2/KCND2 and Kv3.4/KCNC4 (By similarity).[UniProtKB/Swiss-Prot Function]

Product images:



Circular map for MR202827