

## Product datasheet for MR202824L1

### Bcl2l1 (NM\_009743) Mouse Tagged Lenti ORF Clone

#### Product data:

Product Type:	Expression Plasmids
Product Name:	Bcl2l1 (NM_009743) Mouse Tagged Lenti ORF Clone
Tag:	Myc-DDK
Symbol:	Bcl2l1
Synonyms:	Bcl; Bcl(X; Bcl(X)L; bcl-; bcl-x; Bcl-XL; bcl2-L-1; Bcl2l; BclX
Mammalian Cell Selection:	None
Vector:	pLenti-C-Myc-DDK (PS100064)
E. coli Selection:	Chloramphenicol (34 ug/mL)
ORF Nucleotide Sequence:	The ORF insert of this clone is exactly the same as(MR202824).
Restriction Sites:	SgfI-MluI
Cloning Scheme:	

Cloning sites used for ORF Shuttling:



\* The last codon before the Stop codon of the ORF.

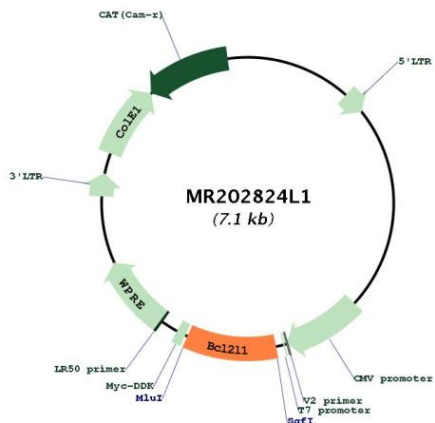
ACCN:	NM_009743
ORF Size:	699 bp



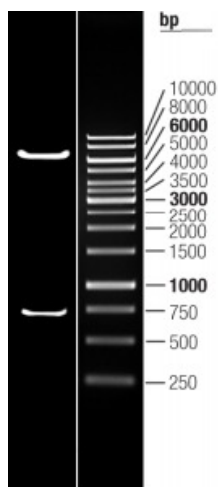
[View online »](#)

<b>OTI Disclaimer:</b>	The molecular sequence of this clone aligns with the gene accession number as a point of reference only. However, individual transcript sequences of the same gene can differ through naturally occurring variations (e.g. polymorphisms), each with its own valid existence. This clone is substantially in agreement with the reference, but a complete review of all prevailing variants is recommended prior to use. <a href="#">More info</a>
<b>OTI Annotation:</b>	This clone was engineered to express the complete ORF with an expression tag. Expression varies depending on the nature of the gene.
<b>Components:</b>	The ORF clone is ion-exchange column purified and shipped in a 2D barcoded Matrix tube containing 10ug of transfection-ready, dried plasmid DNA (reconstitute with 100 ul of water).
<b>Reconstitution Method:</b>	<ol style="list-style-type: none"><li>1. Centrifuge at 5,000xg for 5min.</li><li>2. Carefully open the tube and add 100ul of sterile water to dissolve the DNA.</li><li>3. Close the tube and incubate for 10 minutes at room temperature.</li><li>4. Briefly vortex the tube and then do a quick spin (less than 5000xg) to concentrate the liquid at the bottom.</li><li>5. Store the suspended plasmid at -20°C. The DNA is stable for at least one year from date of shipping when stored at -20°C.</li></ol>
<b>RefSeq:</b>	<a href="#">NM_009743.4</a>
<b>RefSeq Size:</b>	2371 bp
<b>RefSeq ORF:</b>	702 bp
<b>Locus ID:</b>	12048
<b>UniProt ID:</b>	<a href="#">Q64373</a>
<b>Cytogenetics:</b>	2 H1
<b>Gene Summary:</b>	This gene encodes a member of the Bcl-2 family of apoptosis regulators. The encoded protein is localized to the inner and outer mitochondrial membranes and regulates the programmed cell death pathway during development and tissue homeostasis. This protein binds to voltage-dependent anion channels in the outer mitochondrial membrane to facilitate the uptake of calcium ions. Mice embryos lacking this gene survived for two weeks and exhibited cell death of immature hematopoietic cells and neurons. Alternative splicing results in multiple transcript variants. Additional alternatively spliced transcript variants of this gene have been described, but their full-length nature is not known. [provided by RefSeq, Jan 2014]

Product images:



Circular map for MR202824L1



Double digestion of MR202824L1 using SgfI and MluI