

Product datasheet for MR202816

Msra (NM_026322) Mouse Tagged ORF Clone

Product data:

Product Type:	Expression Plasmids
Product Name:	Msra (NM_026322) Mouse Tagged ORF Clone
Tag:	Myc-DDK
Symbol:	Msra
Synonyms:	2310045J23Rik; 6530413P12Rik; MSR-A
Mammalian Cell Selection:	Neomycin
Vector:	pCMV6-Entry (PS100001)
E. coli Selection:	Kanamycin (25 ug/mL)
ORF Nucleotide Sequence:	>MR202816 ORF sequence Red=Cloning site Blue=ORF Green=Tags(s)

TTTTGTAATACGACTCACTATAGGGCGCCGGGAATTCGTCGACTGGATCCGGTACCGAGGAGATCTGCC
GCC**CGATCGCC**

ATGCTCTCCGCCTCTAGAAGGGCTCTCCAGCTCCTCTCTAGCGCCAACCCGGTACGGAGGATGGGCGACT
CAGCTTCGAAAGTCATCTCCGCAGAGGAAGCCTTGCCGGGACGCACCGAGCCGATCCCTGTAACAGCCAA
ACACCATGTCAGTGGCAACAGAACGGTTGAACCTTCCAGAGGGAACACAGATGGCTGTATTTGGAATG
GGCTGCTTCTGGGAGCTGAGCGCAAGTCTGGGTCTTAAAAGGAGTGTACTCAACCAAGTGGGCTTTG
CAGGAGGCCACACACGCAATCCCACCTACAAGAGGTCTGCTCAGAAAAAAGTGGCCACGCCGAAGTCGT
CCGGTTGTGTACCGCCAGAGCACATCAGCTTTGAGGAACTGCTCAAGGTCTTCTGGGAGAATCACGAC
CCGACCAAGGCATGCGCCAAGGCAATGACTTTGGTACACAGTACCGGTACGAGTCTATCCACATCCG
CCGTGCAGATGGAAGCAGCCCTGAGATCCAAGGAAGAATACAAAAGGTTCTTTCAAAGCATAAATTTGG
CCCCATCACCACCGACATCCGAGAGGGACAAGTGTCTACTATGCCGAAGACTACCACGACAACTCTG
AGCAAGAACCAGACGGCTACTGTGGCCTCGGGGTACTGGAGTTTCTGCCCGATGGCCATTAATAA

ACGCGTACGCGGGCGCTCGAGCAGAACTCATCTCAGAAGAGGATCTGGCAGCAAATGATATCTGGATT
ACAAGGATGACGACGATAAGGTTTAA



[View online »](#)

Protein Sequence: >MR202816 protein sequence
Red=Cloning site Green=Tags(s)

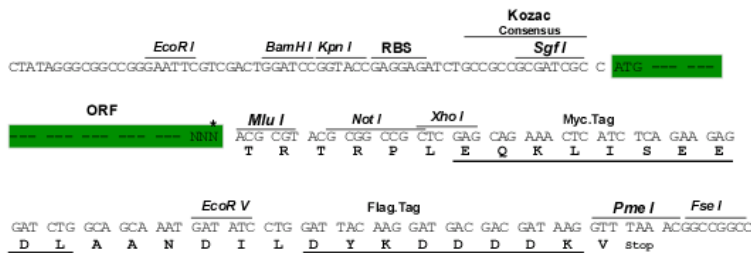
MLSASRRALQLLSSANPVRMGDSASKVISAEALPGRTEPIPVTAKHHVSGNRTVEPFPEGTQMAVFGM
 GCFWGAERKFVWLKGVYSTQVGFAGGHTRNPTYKEVCSEKTHAEVVRVVYRPEHISFEELLKVFWENHD
 PTQGMRQGNDFGTQYRSVYPTSAVQMEALRSKEEYQKVLSKHNFGPITTDIREGQVFYYAEDYHQOYL
 SKNPDGYCGLGGTGVSCPMAIKK

TRTRPLEQKLISEEDLAANDILDYKDDDDKV

Restriction Sites: SgfI-MluI

Cloning Scheme:

Cloning sites used for ORF Shuttling:



ACCN: NM_026322

ORF Size: 702 bp

OTI Disclaimer: The molecular sequence of this clone aligns with the gene accession number as a point of reference only. However, individual transcript sequences of the same gene can differ through naturally occurring variations (e.g. polymorphisms), each with its own valid existence. This clone is substantially in agreement with the reference, but a complete review of all prevailing variants is recommended prior to use. [More info](#)

OTI Annotation: This clone was engineered to express the complete ORF with an expression tag. Expression varies depending on the nature of the gene.

Components: The ORF clone is ion-exchange column purified and shipped in a 2D barcoded Matrix tube containing 10ug of transfection-ready, dried plasmid DNA (reconstitute with 100 ul of water).

Reconstitution Method:

1. Centrifuge at 5,000xg for 5min.
2. Carefully open the tube and add 100ul of sterile water to dissolve the DNA.
3. Close the tube and incubate for 10 minutes at room temperature.
4. Briefly vortex the tube and then do a quick spin (less than 5000xg) to concentrate the liquid at the bottom.
5. Store the suspended plasmid at -20°C. The DNA is stable for at least one year from date of shipping when stored at -20°C.

RefSeq: [NM_026322.4](#), [NP_080598.2](#)

RefSeq Size: 1880 bp

RefSeq ORF: 702 bp

Locus ID: 110265

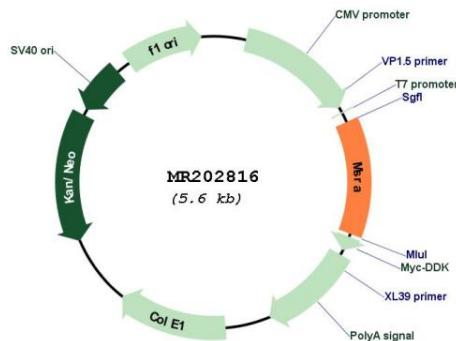
UniProt ID: [Q9D6Y7](#)

Cytogenetics: 14 33.36 cM

MW: 26 kDa

Gene Summary: Has an important function as a repair enzyme for proteins that have been inactivated by oxidation. Catalyzes the reversible oxidation-reduction of methionine sulfoxide in proteins to methionine (By similarity).[UniProtKB/Swiss-Prot Function]

Product images:



Circular map for MR202816