

Product datasheet for **MR202814**

Lptm4a (BC086667) Mouse Tagged ORF Clone

Product data:

Product Type:	Expression Plasmids
Product Name:	Lptm4a (BC086667) Mouse Tagged ORF Clone
Tag:	Myc-DDK
Symbol:	Lptm4a
Synonyms:	LPTM4, MTP, mKIAA0108
Vector:	pCMV6-Entry (PS100001)
E. coli Selection:	Kanamycin (25 ug/mL)
Cell Selection:	Neomycin
ORF Nucleotide Sequence:	>MR202814 representing BC086667 Red=Cloning site Blue=ORF Green=Tags(s)

TTTTGTAATACGACTCACTATAGGGCGGCCGGAATTCGTCGACTGGATCCGGTACCGAGGAGATCTGCC
GCC**CGATCGCC**

ATGGTGTCCATGACTTTCAAACGGAGCCGACGACCGGTTCTACAGCACCCGGTCTGCGGCTGTTGCC
ATGTCCGCACCGGACGATCATCCTGGGACCTGGTACATGGTGGTCAACCTGTTGATGGCCATTTTGCT
GACCGTGGAGGTGACTCATCAAATCCATGCCAGCTGTCAACATTCAGTATGAAGTCATTGGTAATTAC
TATTCATCTGAGAGAATGGCTGATAATGCCTGCGTTCTTTTTGCCGTCTCTGTTCTTATGTTATAATCA
GTTCAATGCTGGTTTATGGAGCCATTTCTTATCAAGTGGGCTGGCTGATTCTTTCTTCTGCTACCGACT
CTTTGACTTCGTTCTCAGTTGTCTGGTGGCCATCAGTTCTCTCACTTACTTGCCAAGAATCAAAGAATAT
CTGGATCAGTTGCCTGATTTCCCATACAAAGATGACCTCCTGGCATTGGACTCCAGCTGCCTCCTGTTCA
TCGTCCTTGTGTTCTTTGTGGTATTCATCATTTTTAAGGCTTACCTAATCAATTGTGTTGGAACTGCTA
CAAATACATCAACAACAGAAATGTGCCAGAGATTGCCGTGTACCCTGCCTTTGAAACACCTCCACAGTAT
GTTTTGCCAACCTATGAAATGGCTGTGAAGATTCCTGAGAAAGAGCCACCACCTCCTTACCTGCCTGCC

ACGCGTACGCGGCCGCTCGAGCAGAAACTCATCTCAGAAGAGGATCTGGCAGCAAATGATATCCTGGATT
ACAAGGATGACGACGATAAGGTTTAA



[View online »](#)

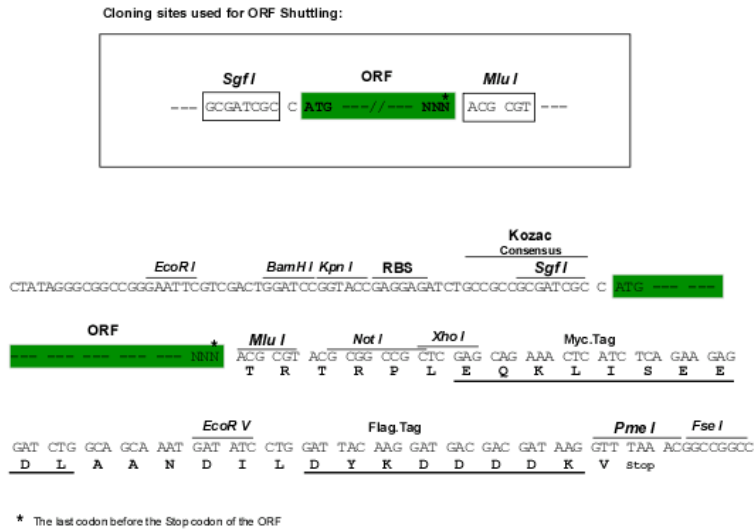
Protein Sequence: >MR202814 representing BC086667
 Red=Cloning site Green=Tags(s)

MVSMTFKRSRSDRFYSTRCCGCHVRTGTIILGTWYMVVLLMAILLTVEVTHPNSMPAVNIQYEVIGNY
 YSSERMADNACVLFVAVSLMFIISMLVYGAISYQVWGLIPFFCYRLDFVLSCLVAISSLYLPRIKEY
 LDQLPDFPYKDDLLALDSSCLLFIVLVFFVVFIIFKAYLINCWNCYKYINNRRNVP EIAVYPAFETPPQY
 VLPTYEMAVKIPEKEPPPPYLPA

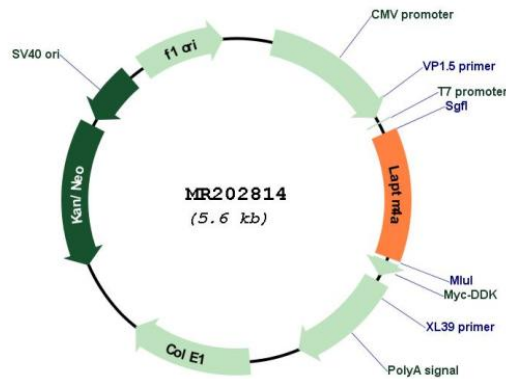
TRTRPLEQKLISEEDLAANDILDYKDDDDKV

Restriction Sites: Sgfl-MluI

Cloning Scheme:



Plasmid Map:



ACCN: BC086667

ORF Size: 699 bp

OTI Disclaimer:	The molecular sequence of this clone aligns with the gene accession number as a point of reference only. However, individual transcript sequences of the same gene can differ through naturally occurring variations (e.g. polymorphisms), each with its own valid existence. This clone is substantially in agreement with the reference, but a complete review of all prevailing variants is recommended prior to use. More info
OTI Annotation:	This clone was engineered to express the complete ORF with an expression tag. Expression varies depending on the nature of the gene.
Components:	The ORF clone is ion-exchange column purified and shipped in a 2D barcoded Matrix tube containing 10ug of transfection-ready, dried plasmid DNA (reconstitute with 100 ul of water).
Reconstitution Method:	<ol style="list-style-type: none">1. Centrifuge at 5,000xg for 5min.2. Carefully open the tube and add 100ul of sterile water to dissolve the DNA.3. Close the tube and incubate for 10 minutes at room temperature.4. Briefly vortex the tube and then do a quick spin (less than 5000xg) to concentrate the liquid at the bottom.5. Store the suspended plasmid at -20°C. The DNA is stable for at least one year from date of shipping when stored at -20°C.
RefSeq:	BC086667.1
RefSeq Size:	1350 bp
RefSeq ORF:	701 bp
Locus ID:	17775
Cytogenetics:	12 A1.1
MW:	49.5 kDa