

Product datasheet for MR202797

Gtpbp5 (BC025144) Mouse Tagged ORF Clone

Product data:

Product Type:	Expression Plasmids
Product Name:	Gtpbp5 (BC025144) Mouse Tagged ORF Clone
Tag:	Myc-DDK
Symbol:	Gtpbp5
Synonyms:	1810011P19Rik; 2900056P18Rik; D2Bwg0647e; Gtpbp5
Mammalian Cell Selection:	Neomycin
Vector:	pCMV6-Entry (PS100001)
E. coli Selection:	Kanamycin (25 ug/mL)
ORF Nucleotide Sequence:	>MR202797 ORF sequence Red=Cloning site Blue=ORF Green=Tags(s)

TTTTGTAATACGACTCACTATAGGGCGGCCGGAATTCGTCGACTGGATCCGGTACCGAGGAGATCTGCC
GCC**CGATCGCC**

ATGGTATCTACCAGACTTGCTTGGCAAGGACTTGCCTGTGTTGAGGGTGTGGAAATGGGCTCCAT
CCACACGTGCTGCCTCAGGCCTAGCCACCTTCTTCTACAAGCATCATGCAGATTGCTCTGTGGGCAT
CGTAGACCACGCTAAGCACCGGGAGCCTTCTGGGAAGAAGTTCTGTGAGAGAAGAACTGAAAAGGCAT
TTCGTGGATCACCGGAGAGTGTGGTCCGTGGAGGAAGCGGGGGCTCTGGCATGAGCTGCTTCCACAGT
AGCCCCGAAGGAGTTTGGAGGCCCTGATGGTGGAGATGGAGGAAATGGTGGACACATCATCCTGAGAGT
TGACCAGCAAGTCAAGTCTTGTCTCAGTCTTATCCCAGTATCAGGGCTTCAGTGGAGAAGACGGTGGC
AGTAAAAACTGCTCTGGACGAGGTGGTCCACCCTCTACATTCAGGTCCCTGTGGGTACCTTGGTAAAAG
AAGGAGACAAGATCGTGGCTGACCTCTAACCTGGGAGACGAGTACGTGGCTGCTCTCGGGGTGCAGG
AGGAAAAGGCAATCGTTTCTTCTGGCCAACGACAACCCTGCCCTGTAACCTGCACCCCTGGACAACCG
GGTCAGGAGCGGGTCTCTACTTGGAACTCAAGACAATGGCTCACGCTGGGATGGTATGCCCC

ACGCGTACGCGGGCGCTCGAGCAGAACTCATCTCAGAAGAGGATCTGGCAGCAAATGATATCCTGGATT
ACAAGGATGACGACGATAAGGTTTAA



[View online »](#)

Protein Sequence: >MR202797 protein sequence
Red=Cloning site Green=Tags(s)

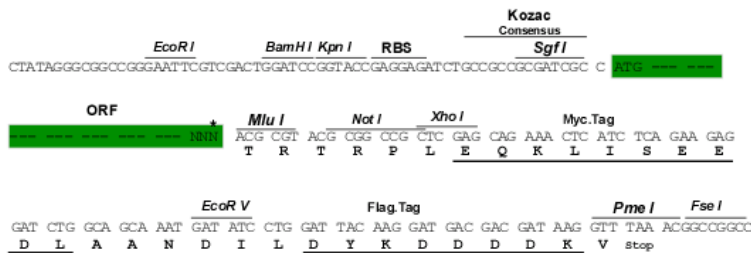
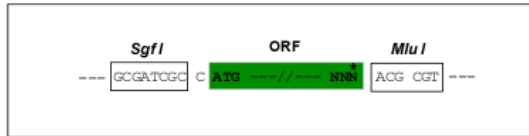
MVSTRLLVARTCTVFEGVLKWPASTRAVLRPShLLLQASCRLLSVGIVDHAKHREPSGKKVLSEKCLKRH
 FVDHRRVLYRGGSGGSGMSCFHSEPRKEFGGPDGGDGGNGGHIILRVDQQVKSLSSVLSQYQGFSGEDGG
 SKNCSGRGGATLYIQVPVGTLVKEGDKIVADLSNLGDEYVAALGGAGGKGNRFFLANDNRAPVTCTPGQP
 GQERVLYLELKTMAHAGMVCP

TRTRPLEQKLISEEDLAANDILDYKDDDDKV

Restriction Sites: SgfI-MluI

Cloning Scheme:

Cloning sites used for ORF Shuttling:



* The last codon before the Stop codon of the ORF

ACCN: BC025144

ORF Size: 693 bp

OTI Disclaimer: The molecular sequence of this clone aligns with the gene accession number as a point of reference only. However, individual transcript sequences of the same gene can differ through naturally occurring variations (e.g. polymorphisms), each with its own valid existence. This clone is substantially in agreement with the reference, but a complete review of all prevailing variants is recommended prior to use. [More info](#)

OTI Annotation: This clone was engineered to express the complete ORF with an expression tag. Expression varies depending on the nature of the gene.

Components: The ORF clone is ion-exchange column purified and shipped in a 2D barcoded Matrix tube containing 10ug of transfection-ready, dried plasmid DNA (reconstitute with 100 ul of water).

Reconstitution Method:

1. Centrifuge at 5,000xg for 5min.
2. Carefully open the tube and add 100ul of sterile water to dissolve the DNA.
3. Close the tube and incubate for 10 minutes at room temperature.
4. Briefly vortex the tube and then do a quick spin (less than 5000xg) to concentrate the liquid at the bottom.
5. Store the suspended plasmid at -20°C. The DNA is stable for at least one year from date of shipping when stored at -20°C.

Note: Plasmids are not sterile. For experiments where strict sterility is required, filtration with 0.22um filter is required.

RefSeq: [BC025144](#), [AAH25144](#)

RefSeq Size: 1742 bp

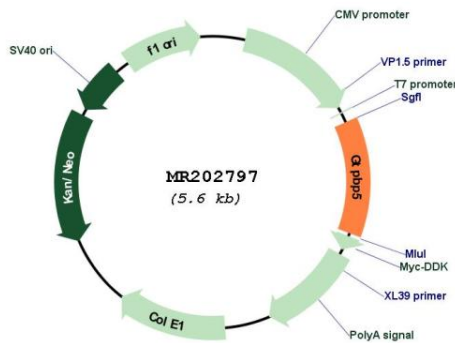
RefSeq ORF: 695 bp

Locus ID: 52856

Cytogenetics: 2 102.59 cM

MW: 24.5 kDa

Product images:



Circular map for MR202797