

Product datasheet for MR202790

Rfxap (NM_133231) Mouse Tagged ORF Clone

Product data:

| | |
|---------------------------|---|
| Product Type: | Expression Plasmids |
| Product Name: | Rfxap (NM_133231) Mouse Tagged ORF Clone |
| Tag: | Myc-DDK |
| Symbol: | Rfxap |
| Synonyms: | 5730495K23Rik |
| Mammalian Cell Selection: | Neomycin |
| Vector: | pCMV6-Entry (PS100001) |
| E. coli Selection: | Kanamycin (25 ug/mL) |
| ORF Nucleotide Sequence: | >MR202790 representing NM_133231 Red=Cloning site Blue=ORF Green=Tags(s) |

TTTTGTAATACGACTCACTATAGGGCGGCCGGAATTCGTCGACTGGATCCGGTACCGAGGAGATCTGCCGCCCGATCGCC

ACGGAGGCGCAGGCTGTGCCGAGGGCTCGGGCCGAGCACCGCCAGTCCCCGGACGGCCCTCCGGTGA
CGGTGCTGGTGATGCGGCAGGACGAGGCCGAGGCCGAGCGGCTCTGAGGCCGGCCTGGCGGGAGTGA
GGCGGCGCAGACGCCGAGGACGAGGCCGGGGACGACGACGCCGACCTGCTGGACACATCGGACCCGGCG
GGCGGCGGAGAGTGCAGCCAGCCGGAGGAGCTGGAGGACGAGGACCGGAGGGTGGCGGCGCAGCGC
GCAGGCGAGGCTCCAAGACCTGCACGTACGAGGGCTGCCGCGAGACCACCAGCCAGTGGCCAAGCAGCG
CAAGCCCTGGATGTGCAAGAAGCACCGCAACAAGATGTACAAGGACAAGTACAAGAAGAAGAAGAGCGAC
CAGGCACTGGGCTCTGGCGGCCCGTCCGCGCCAGCACAGGCAACGTCAAAGTGGAGGAAAGCACAGACA
ACATACTCTCCATTGTCAAACAGAGAACAGGATCCTTTGGTGATCGCCCTGCAAGACCTACTCTTTAGTA
GCAAGTGTAAATCAGAAAAGACTGTCACTAAGAAGTCCAGAAGTTGTCCAGTTTTTACAGAAGCAG
CAGCAGCTACTAAATCAGCAAGTTTTGGAGCAAAGACAGCAGCATTTCAGGAGCGCCAGTG

ACGCGTACGCGGCCGCTCGAGCAGAACTCATCTCAGAAGAGGATCTGGCAGCAAATGATATCCTGGATT
ACAAGGATGACGACGATAAGGTTTAA



[View online »](#)

Protein Sequence: >MR202790 representing NM_133231
 Red=Cloning site Green=Tags(s)

TEAQAVPEGSGPSTASPRTPAPPVTVLVMRQDEAEADGALRPLAGSEAAADAEDAEGDDADLLDTS
 DPA GGGESAASPEELEDADAEGGGAARRRGSKTCTYEGCRETTSQVAKQRKPWMCKKHRNKMYKDYK
 KKKSD QALGSGGPPSAASTGNVKLEESTDNLISIVKQRTGSFGDRPARPTLLEQVLNQRKLSLLRSPEVVQFLQKQ
 QQLLNQVLEQRQHFPGAPV

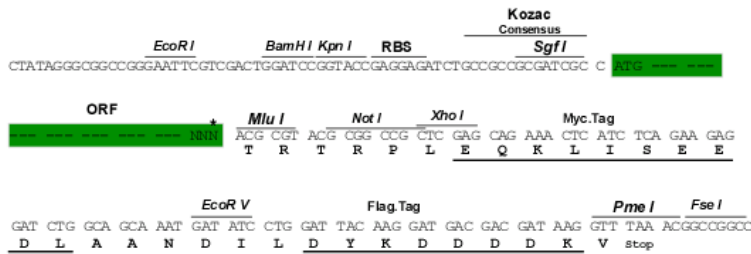
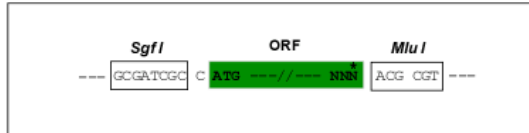
TRTRPLEQKLISEEDLAANDILDYKDDDDKV

Chromatograms: https://cdn.origene.com/chromatograms/mm9091_f11.zip

Restriction Sites: SgfI-MluI

Cloning Scheme:

Cloning sites used for ORF Shuttling:



* The last codon before the Stop codon of the ORF

ACCN: NM_133231

ORF Size: 693 bp

OTI Disclaimer: The molecular sequence of this clone aligns with the gene accession number as a point of reference only. However, individual transcript sequences of the same gene can differ through naturally occurring variations (e.g. polymorphisms), each with its own valid existence. This clone is substantially in agreement with the reference, but a complete review of all prevailing variants is recommended prior to use. [More info](#)

OTI Annotation: This clone was engineered to express the complete ORF with an expression tag. Expression varies depending on the nature of the gene.

Components: The ORF clone is ion-exchange column purified and shipped in a 2D barcoded Matrix tube containing 10ug of transfection-ready, dried plasmid DNA (reconstitute with 100 ul of water).

Reconstitution Method:

1. Centrifuge at 5,000xg for 5min.
2. Carefully open the tube and add 100ul of sterile water to dissolve the DNA.
3. Close the tube and incubate for 10 minutes at room temperature.
4. Briefly vortex the tube and then do a quick spin (less than 5000xg) to concentrate the liquid at the bottom.
5. Store the suspended plasmid at -20°C. The DNA is stable for at least one year from date of shipping when stored at -20°C.

RefSeq: [NM_133231.2](#), [NP_573494.1](#)

RefSeq Size: 2185 bp

RefSeq ORF: 696 bp

Locus ID: 170767

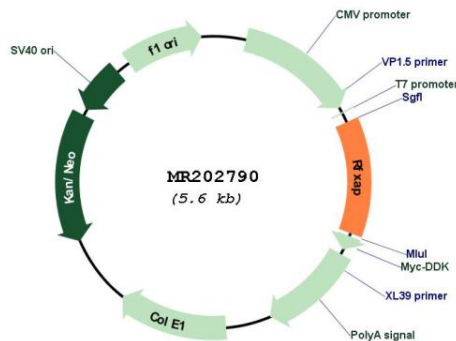
UniProt ID: [Q8VCG9](#)

Cytogenetics: 3 C

MW: 24.8 kDa

Gene Summary: Part of the RFX complex that binds to the X-box of MHC II promoters.[UniProtKB/Swiss-Prot Function]

Product images:



Circular map for MR202790