

## Product datasheet for MR202771

### Fam3a (NM\_025473) Mouse Tagged ORF Clone

#### Product data:

Product Type:	Expression Plasmids
Product Name:	Fam3a (NM_025473) Mouse Tagged ORF Clone
Tag:	Myc-DDK
Symbol:	Fam3a
Synonyms:	1810037C20Rik
Mammalian Cell Selection:	Neomycin
Vector:	pCMV6-Entry (PS100001)
E. coli Selection:	Kanamycin (25 ug/mL)
ORF Nucleotide Sequence:	>MR202771 ORF sequence Red=Cloning site Blue=ORF Green=Tags(s)

TTTTGTAATACGACTCACTATAGGGCGGCCGGGAATTCGTCGACTGGATCCGGTACCGAGGAGATCTGCC  
GCC**CGATCGCC**

ATGAGGTTGGCAGGCCCCCTGCGCATCGTGGCCCTAATCATCATTATGGGTCTCACCTGGATCCTAGTCA  
CCATCCTCCTAGGTGGTCTGGTGTGGCCTTCTCGAATTCAGCAGTTCTTCACCAGCCCAGAGAACTC  
AGTGACTGCAGAACCAAGGGCCAGGAAGTACAAATGCGGCCTGCCCCAGCCTTGCTCTGAAGAGCACCTG  
AGCTTTTGAATAGTCAGCGGGGCTGCCAATGTCATCGGGCCCAAGATCTGCCTCGAGGACAAGATGCTCA  
TGAGCAGCGTCAAAGACAATGTGGGCCGTGGCCTGAACATCGCCCTGGTGAATGGGGTCAGTGGTGAGCT  
CCTAGAAGCCAGAGCCTTTGACATGTGGGCTGGAGATGTCAATGATCTCTTGAAGTTCATCCGGCCACTG  
CATGAAGGTACCCTGGTGTGGTCTTCTATGATGATCCAGCTACCAAGATGAATGAAGAGACCAGGA  
AGCTTTTTTCTGAGCTGGGCAGCAGGAATGCCAAGGATCTAGCCTTCCGTGACAGCTGGGTGTTGTGGG  
AGCCAAAGGTGTGCAGAACAAAGAGCCCCTTTGGCAGCATATGAAGAACAGTAAGCACACCAACAAGTAT  
GAGGGCTGGCCAGAGGCCCTGGAGATGGAAGGCTGTATCCCTCGAAGGAGCATAGCGGGC

**ACGCGT**ACGCGGGCCGCTCGAGCAGAACTCATCTCAGAAGAGGATCTGGCAGCAAATGATATCCTGGATT  
ACAAGGATGACGACGATAAGGTTTAA



[View online »](#)

**Protein Sequence:** >MR202771 protein sequence  
 Red=Cloning site Green=Tags(s)

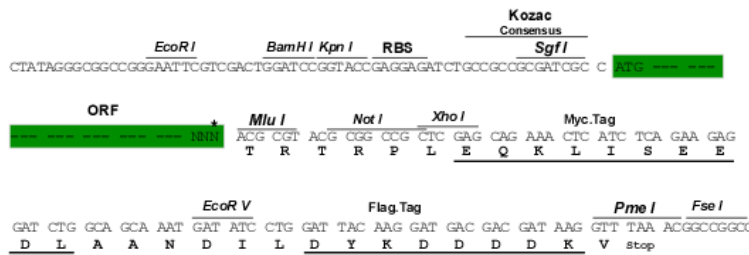
MRLAGPLRIVALIIIMGLTWILVTILLGGPGVGLPRIQQFFTSPE NSVTAEP RARKYKCGLPQPCPEEHL  
 SFRIVSGAANVIGPKICLEDKMLMSSVKDNVGRGLNIALVNGVSGELLEARAFDMWAGDVNDLLKFIRPL  
 HEGTLVFVASYDDPATKMNEETRKLFLSELGRNAKDLAFRDSWVFGAKGVQNKSPFEQHMKNKSHNTNKY  
 EGWPEALEMEGCIPRRSIAG

TRTRPLEQKLISEEDLAANDILDYKDDDDKV

**Restriction Sites:** SgfI-MluI

**Cloning Scheme:**

Cloning sites used for ORF Shuttling:



\* The last codon before the Stop codon of the ORF

**ACCN:** NM\_025473

**ORF Size:** 693 bp

**OTI Disclaimer:** The molecular sequence of this clone aligns with the gene accession number as a point of reference only. However, individual transcript sequences of the same gene can differ through naturally occurring variations (e.g. polymorphisms), each with its own valid existence. This clone is substantially in agreement with the reference, but a complete review of all prevailing variants is recommended prior to use. [More info](#)

**OTI Annotation:** This clone was engineered to express the complete ORF with an expression tag. Expression varies depending on the nature of the gene.

**Components:** The ORF clone is ion-exchange column purified and shipped in a 2D barcoded Matrix tube containing 10ug of transfection-ready, dried plasmid DNA (reconstitute with 100 ul of water).

**Reconstitution Method:**

1. Centrifuge at 5,000xg for 5min.
2. Carefully open the tube and add 100ul of sterile water to dissolve the DNA.
3. Close the tube and incubate for 10 minutes at room temperature.
4. Briefly vortex the tube and then do a quick spin (less than 5000xg) to concentrate the liquid at the bottom.
5. Store the suspended plasmid at -20°C. The DNA is stable for at least one year from date of shipping when stored at -20°C.

**RefSeq:** [NM\\_025473.4](#)

**RefSeq Size:** 1765 bp

**RefSeq ORF:** 693 bp

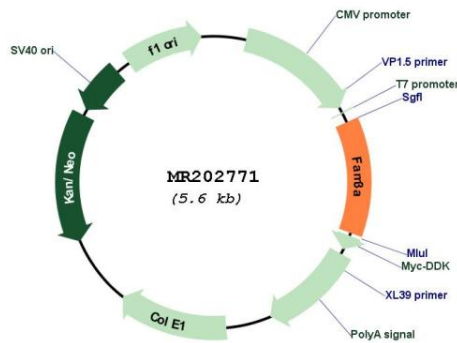
**Locus ID:** 66294

**UniProt ID:** [Q9D8T0](#)

**Cytogenetics:** X A7.3

**MW:** 25.4 kDa

**Product images:**



Circular map for MR202771