

## Product datasheet for MR202741

### Timm50 (BC010303) Mouse Tagged ORF Clone

#### Product data:

Product Type:	Expression Plasmids
Product Name:	Timm50 (BC010303) Mouse Tagged ORF Clone
Tag:	Myc-DDK
Symbol:	Timm50
Synonyms:	2810403L02Rik; AU015082; TIM50L
Mammalian Cell Selection:	Neomycin
Vector:	pCMV6-Entry (PS100001)
E. coli Selection:	Kanamycin (25 ug/mL)
ORF Nucleotide Sequence:	>MR202741 ORF sequence Red=Cloning site Blue=ORF Green=Tags(s)

TTTTGTAATACGACTCACTATAGGGCGGCCGGAATTCGTCGACTGGATCCGGTACCGAGGAGATCTGCC  
GCC**CGATCGCC**

ATGATCATCGAGCCACCAGTCCCTGCCTTCTCCAGACCCTCTGCGGGAGCCCTACTACCAGCCACCTT  
ATACACTGGTCTGGAGCTTACCGGGTCTTCTGCACCCAGAGTGGTCGCTGGCCACTGGCTGGAGGT  
TAAGAAGCGTCCAGGCATCGAGACCTTGTCCAGCAGCTTGCCCTCTGTATGAAATAGTCATCTTCACA  
TCAGAGACTGGCATGACTGCATTTCCACTATTGATAGTGTGGACCCTCACGTTTCATCTCCTACCGTC  
TGTTCCGGGACGCCACCAGATATATGGAGGACATCATGTGAAGGACATCTCCTGTCTGAATCGGGACCC  
AGCCCGAGTAGTAGTCGTGGACTGCAAGAAGGAAGCTTCCGCCTCCAGCCCTCAACGGTGTTCGCCTG  
CGGCCCTGGGATGGCAACTCAGATGACCGGTCTTGTCTGGACCTGTCTGCCTTCTCAAGACCATTGCAC  
TGAACCAAGTGGAGGACGTCGGACGGTCTGGAGCACTATGCTCTAGAGGATGACCCACTGGAGGCATT  
CAAACAGCGGCAGAGCCGGCTTGAGCAGGAGGAGCAGCAGCGCCTGGCCGAGCTCTCCAAGTCCAACAGG  
CAGGGCTCTCCTTTGGCTCACTCGCCAGCCGACTGTGGCCTCGCTCCAAGCAGCCC

**ACGCGT**ACGCGGGCGCTCGAGCAGAACTCATCTCAGAAGAGGATCTGGCAGCAATGATATCCTGGATT  
ACAAGGATGACGACGATAAGGTTTAA



[View online »](#)

**Protein Sequence:** >MR202741 protein sequence  
Red=Cloning site Green=Tags(s)

MIIIEPTSPCLLPDPLREPYYPPTYLVLELTGVLLHPEWSLATGWRFFKKRPGIETLFQQLAPLYEIVIFT  
 SETGMTAFPLIDSVDPHGFISYRLFDRDATRYMEGHHVKDISCLNRDPARVVVVDCCKEAFRLQPFNGVAL  
 RPWDGNSDDRVLDDLAFKLTIALNQVEDVRTVLEHYALEDDPLEAFKQQRSLQEQQRLAELSKSNR  
 QGLSFGSLASRLWPRSKQP

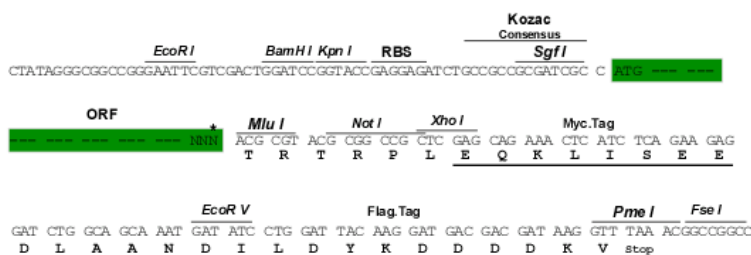
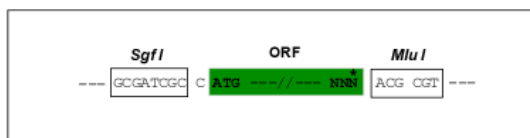
TRTRPLEQKLISEEDLAANDILDYKDDDDKV

**Restriction Sites:**

SgfI-MluI

**Cloning Scheme:**

Cloning sites used for ORF Shuttling:



\* The last codon before the Stop codon of the ORF

**ACCN:** BC010303

**ORF Size:** 687 bp

**OTI Disclaimer:** The molecular sequence of this clone aligns with the gene accession number as a point of reference only. However, individual transcript sequences of the same gene can differ through naturally occurring variations (e.g. polymorphisms), each with its own valid existence. This clone is substantially in agreement with the reference, but a complete review of all prevailing variants is recommended prior to use. [More info](#)

**OTI Annotation:** This clone was engineered to express the complete ORF with an expression tag. Expression varies depending on the nature of the gene.

**Components:** The ORF clone is ion-exchange column purified and shipped in a 2D barcoded Matrix tube containing 10ug of transfection-ready, dried plasmid DNA (reconstitute with 100 ul of water).

**Reconstitution Method:**

1. Centrifuge at 5,000xg for 5min.
2. Carefully open the tube and add 100ul of sterile water to dissolve the DNA.
3. Close the tube and incubate for 10 minutes at room temperature.
4. Briefly vortex the tube and then do a quick spin (less than 5000xg) to concentrate the liquid at the bottom.
5. Store the suspended plasmid at -20°C. The DNA is stable for at least one year from date of shipping when stored at -20°C.

**RefSeq:** [BC010303](#), [AAH10303](#)

**RefSeq Size:** 1487 bp

**RefSeq ORF:** 689 bp

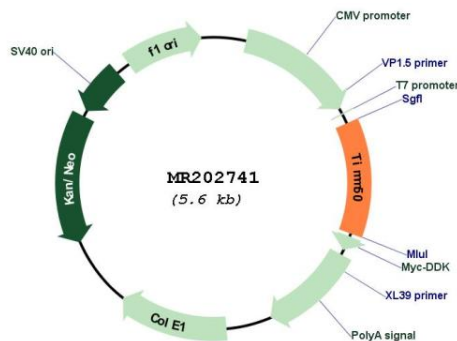
**Locus ID:** 66525

**Cytogenetics:** 7 A3

**MW:** 26.4 kDa

**Gene Summary:** Essential component of the TIM23 complex, a complex that mediates the translocation of transit peptide-containing proteins across the mitochondrial inner membrane. Has some phosphatase activity in vitro; however such activity may not be relevant in vivo. [UniProtKB/Swiss-Prot Function]

**Product images:**



Circular map for MR202741