

## Product datasheet for MR202731

### 0610007P22Rik (BC027751) Mouse Tagged ORF Clone

#### Product data:

Product Type:	Expression Plasmids
Product Name:	0610007P22Rik (BC027751) Mouse Tagged ORF Clone
Tag:	Myc-DDK
Symbol:	0610007P22Rik
Synonyms:	0610007P22Rik; 1110014B11Rik; AL022759
Vector:	pCMV6-Entry (PS100001)
E. coli Selection:	Kanamycin (25 ug/mL)
Cell Selection:	Neomycin
ORF Nucleotide Sequence:	>MR202731 representing BC027751 Red=Cloning site Blue=ORF Green=Tags(s)

TTTTGTAATACGACTCACTATAGGGCGCCGGGAATTCGTCGACTGGATCCGGTACCGAGGAGATCTGCC  
GCCGCGATCGCC

ATGTGCCTTATTTGGGGCCCTAGAACCTACCCTACACTCTCTGACAGACAGCTGGTGGCACAGTCAGGGG  
TCGCAGTCATAGACTGCTCCTGGGCCAACTGGACGACACACCCTTTCAGAAGATGCGAGGGAGCCACTT  
GCGGCTCCTGCCTTACCTCGTAGCTGCCAACCCGTAAACTATGGCCGGCCCTGCAAACCTTTCCTGTGTG  
GAAGCTTTCGCTGCTGCCTTCTGCATCGTAGGCTTTTCAGACCTTGCTGTCAATTTGCTTCGGAAGTTTA  
AGTGGGGCAAGGGCTTCTGGACCTGAACCGGGAGCTCCTGGATAAGTACGCAGCTTGCCGTGGCCCGGA  
GGAGGTGTTGCAGGCTGAACAGGGGTAATTGGCTAGCACCAGGGACACGCCTGAAGAGGACATCGATCCC  
TTTGACGTGGACTCAGGGCGGGAGTTTGTGAATCTCAACAGGCCCGTGGCCAGCACCCGGCTACCTGAGG  
ACATGGATGACTGATGGGTCTGAGGAGCACAGTGAAGATTCTGAGGAGGACAGTGTGAGTGTGAGGA  
ACCAGGACCTGGTGCTAATGGAGGAGACAGCAACTACTCTGGAGCTGAAGAGACCCAGAACAGAGGCT  
CAAGCCAGAGACTCCACTGAAATTTGAAAGGGATCAAGAAACGACAGAGAGAC

ACGCGTACGCGGCCGCTCGAGCAGAACTCATCTCAGAAGAGGATCTGGCAGCAAATGATATCCTGGATT  
ACAAGGATGACGACGATAAGGTTTAA



[View online »](#)

**Protein Sequence:** >MR202731 representing BC027751  
 Red=Cloning site Green=Tags(s)

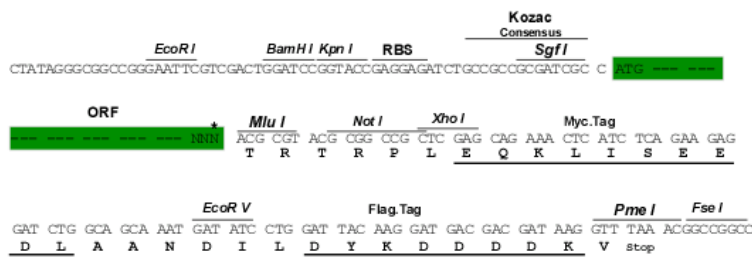
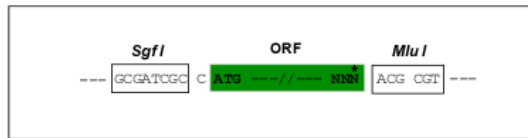
MCLIWGPRTYPTLSDRQLVAQSGVAVIDCSWAKLDDTPFQKMRGSHLRLLPYLVAANPVNYGRPCKLSCV  
 EAFAAAFClVGFSDLAVILLRKFkwGKGFLLNRELLDKYAACRGPEEVLQAEQGYLASTRDTPEEDIDP  
 FDVDSGREFVNLNRPVASTRLPEDMDDTDGSEEHSDESEDSDECEEPGPGANGGDSNYSGAETPEQEA  
 QARDSTEIWKGIKKRQRD

TRTRPLEQKLISEEDLAANDILDYKDDDDKV

**Restriction Sites:** Sgfl-MluI

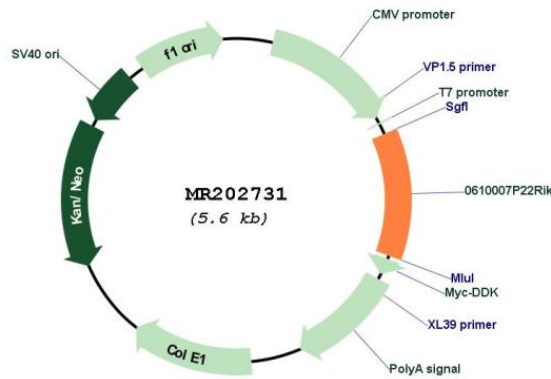
**Cloning Scheme:**

Cloning sites used for ORF Shuttling:



\* The last codon before the Stop codon of the ORF

**Plasmid Map:**



**ACCN:** BC027751

**ORF Size:** 684 bp

<b>OTI Disclaimer:</b>	The molecular sequence of this clone aligns with the gene accession number as a point of reference only. However, individual transcript sequences of the same gene can differ through naturally occurring variations (e.g. polymorphisms), each with its own valid existence. This clone is substantially in agreement with the reference, but a complete review of all prevailing variants is recommended prior to use. <a href="#">More info</a>
<b>OTI Annotation:</b>	This clone was engineered to express the complete ORF with an expression tag. Expression varies depending on the nature of the gene.
<b>Components:</b>	The ORF clone is ion-exchange column purified and shipped in a 2D barcoded Matrix tube containing 10ug of transfection-ready, dried plasmid DNA (reconstitute with 100 ul of water).
<b>Reconstitution Method:</b>	<ol style="list-style-type: none"><li>1. Centrifuge at 5,000xg for 5min.</li><li>2. Carefully open the tube and add 100ul of sterile water to dissolve the DNA.</li><li>3. Close the tube and incubate for 10 minutes at room temperature.</li><li>4. Briefly vortex the tube and then do a quick spin (less than 5000xg) to concentrate the liquid at the bottom.</li><li>5. Store the suspended plasmid at -20°C. The DNA is stable for at least one year from date of shipping when stored at -20°C.</li></ol>
<b>RefSeq:</b>	<a href="#">BC027751.1</a>
<b>RefSeq Size:</b>	1295 bp
<b>RefSeq ORF:</b>	686 bp
<b>Locus ID:</b>	68327
<b>Cytogenetics:</b>	17 A3.3
<b>MW:</b>	47.4 kDa
<b>Gene Summary:</b>	Probable pre-rRNA processing protein involved in ribosome biogenesis.[UniProtKB/Swiss-Prot Function]