

## Product datasheet for **MR202722**

### **Ebi3 (NM\_015766) Mouse Tagged ORF Clone**

#### Product data:

**Product Type:** Expression Plasmids  
**Product Name:** Ebi3 (NM\_015766) Mouse Tagged ORF Clone  
**Tag:** Myc-DDK  
**Symbol:** Ebi3  
**Synonyms:** EBI-3; IL-27  
**Mammalian Cell Selection:** Neomycin  
**Vector:** pCMV6-Entry (PS100001)  
**E. coli Selection:** Kanamycin (25 ug/mL)  
**ORF Nucleotide Sequence:** >MR202722 ORF sequence  
**Red=Cloning site Blue=ORF Green=Tags(s)**

TTTTGTAATACGACTCACTATAGGGCGCCGGGAATTCGTCGACTGGATCCGGTACCGAGGAGATCTGCC  
GCC**CGATCGCC**

ATGTCCAAGCTGCTCTTCCTGTCACTTGCCTCTGGGCCAGCCGCTCCCCTGGTTACTGAAACAGCTC  
TCGTGGCTCTAAGCCAGCCAGAGTGCAATGCCATGCTTCTCGGTATCCCGTGGCCGTGGACTGCTCCTG  
GACTCCTCTCCAGGCTCCCACTCCACCAGATCCACGTCCTTCATTGCCACTTACAGGCTCGGTGTGGCC  
ACCCAGCAGCAGAGCCAGCCCTGCCTACAACGGAGCCCCAGGCCTCCCGATGCACCATCCCCGACGTGC  
ACCTGTTCTCCACGGTGCCTACATGCTAAATGTCACTGCAGTGCACCCAGGCGGCCAGCAGCAGCCT  
CCTAGCCTTTGTGGCTGAGCGAATCATCAAGCCGACCCCTCCGGAAGGCGTGCCTGCGCACAGCGGGA  
CAGCGCCTGCAGGTGCTCTGGCATCCCCCTGCTTCTGGCCCTTCCCGGACATCTTCTCTCAAGTACC  
GACTCCGCTACCGGCGCCGAGGAGCCTCTCACTCCGCCAGGTGGGACCCATTGAAGCCACGACTTTCAC  
CCTCAGGAATCGAAACCCATGCCAAGTATTGCATCCAGGTGTCAGCTCAGGACCTCACAGATTATGGG  
AAACCAAGTGACTGGAGCCTCCCTGGGCAAGTAGAAAGTGACCCCATAGGCC

**ACGCGT**ACGCGGGCCGCTCGAGCAGAACTCATCTCAGAAGAGGATCTGGCAGCAATGATATCCTGGATT  
ACAAGGATGACGACGATAAGGTTTAA



[View online »](#)



**Reconstitution Method:**

1. Centrifuge at 5,000xg for 5min.
2. Carefully open the tube and add 100ul of sterile water to dissolve the DNA.
3. Close the tube and incubate for 10 minutes at room temperature.
4. Briefly vortex the tube and then do a quick spin (less than 5000xg) to concentrate the liquid at the bottom.
5. Store the suspended plasmid at -20°C. The DNA is stable for at least one year from date of shipping when stored at -20°C.

**RefSeq:** [NM\\_015766.2](#), [NP\\_056581.1](#)

**RefSeq Size:** 1187 bp

**RefSeq ORF:** 687 bp

**Locus ID:** 50498

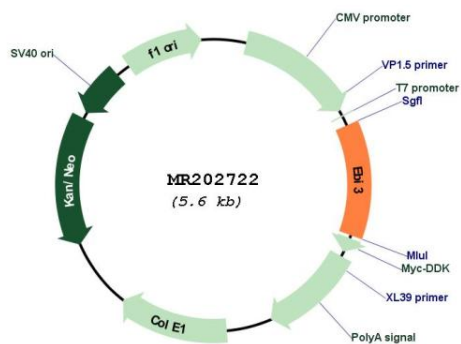
**UniProt ID:** [O35228](#)

**Cytogenetics:** 17 29.08 cM

**MW:** 25.4 kDa

**Gene Summary:** Associates with IL27 to form the IL-27 interleukin, a heterodimeric cytokine which functions in innate immunity. IL-27 has pro- and anti-inflammatory properties, that can regulate T-helper cell development, suppress T-cell proliferation, stimulate cytotoxic T-cell activity, induce isotype switching in B-cells, and that has diverse effects on innate immune cells. Among its target cells are CD4 T-helper cells which can differentiate in type 1 effector cells (TH1), type 2 effector cells (TH2) and IL17 producing helper T-cells (TH17). It drives rapid clonal expansion of naive but not memory CD4 T-cells. It also strongly synergizes with IL-12 to trigger interferon-gamma/IFN-gamma production of naive CD4 T-cells, binds to the cytokine receptor WSX-1/TCCR. Another important role of IL-27 is its antitumor activity as well as its antiangiogenic activity with activation of production of antiangiogenic chemokines. [UniProtKB/Swiss-Prot Function]

Product images:



Circular map for MR202722