

Product datasheet for **MR202692**

Chchd3 (NM_025336) Mouse Tagged ORF Clone

Product data:

Product Type: Expression Plasmids
Product Name: Chchd3 (NM_025336) Mouse Tagged ORF Clone
Tag: Myc-DDK
Symbol: Chchd3
Synonyms: 0610041L09Rik; 1700039J09Rik; AW558177
Mammalian Cell Selection: Neomycin
Vector: pCMV6-Entry (PS100001)
E. coli Selection: Kanamycin (25 ug/mL)
ORF Nucleotide Sequence: >MR202692 ORF sequence
Red=Cloning site Blue=ORF Green=Tags(s)

TTTTGTAATACGACTCACTATAGGGCGGCCGGAATTCGTCGACTGGATCCGGTACCGAGGAGATCTGCC
GCC**CGATCGCC**

ATGGGCGGGACCGCTAGCACCCCGGGTACCTTCGAGGCGGACGAGAACGAGAATCACCCTGGTGA
AGGGCATCCGGCTTTCAGAAAATGTGATCGACCGGATGAAGGAGTCTCTCCATCTGGCTCTAAGTCTCA
GCGATATCCAGCGTTTATGGTGTTCAGTTTCTGATGAAGATTTGAAAAGAAGAGTAGCTGAGGAGCTG
GCATTGGAGCAAGCCAAAAGGAGTCAGAACACCAGAGACGCCTTAAGCAAGCAAGGGACCTAGAAAAG
AAAGGGCTGCAGCAATGAGCAGCTGACCAGAGCTGTCTTCGGGAAAGAATATCCAGTGAAGAGGAGCG
CATGAAGGCGAAGCATCTGGCTCGGCAGCTGGAAGAGAAAAGACCGAGTGTGCGGAAGCAGGATGCATTC
TACAAAGAGCAGCTGGCCAGACTGGAGGAGAGGAGCTCAGAGTTCTACAAAGTCACCACCGAGGAGTATC
AGAAAGCTGTGAAGAGGTGGAAGCCAAGTTCAAGCGGTATGAATATCATCCAGTCTGTGCAGATCTGCA
GACCAAAATCCTCCAGTGTACCCTGAGAACACCAGCAGACTCTCAGCTGCTCTGGCTAGCCAA
TACATGCACTGTGTCAACCATGCCAAACAGAGCATGCTGGAGAAGGGAGGC

ACGCGTACGCGGGCGCTCGAGCAGAAACTCATCTCAGAAGAGGATCTGGCAGCAAATGATATCTGGATT
ACAAGGATGACGACGATAAGGTTTAA



[View online »](#)

Protein Sequence: >MR202692 protein sequence
 Red=Cloning site Green=Tags(s)

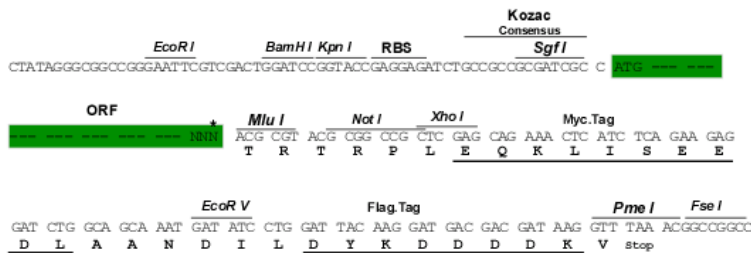
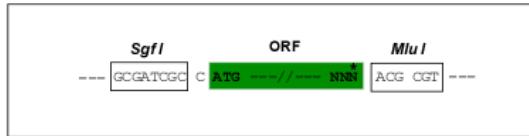
MGGTASTRRVTFEADENENITVVKGIRLSENVIDRMKESSPSGSKSQRYSSVYGASVSDLDLKRRVAEEL
 ALEQAKKESEHQRRKQARDLERERAAAANEQLTRAVLRERISSEERMKAKHLARQLEEKDRVMRKQDAF
 YKEQLARLEERSSEFYKVTTEEYQKAAEEVEAKFKRYEYHPVCADLQTKILQCYRQNTQQTLSCSALASQ
 YMHCVNHAKQSMLEKGG

TRTRPLEQKLISEEDLAANDILDYKDDDDKV

Restriction Sites: SgfI-MluI

Cloning Scheme:

Cloning sites used for ORF Shuttling:



* The last codon before the Stop codon of the ORF

ACCN: NM_025336

ORF Size: 684 bp

OTI Disclaimer: The molecular sequence of this clone aligns with the gene accession number as a point of reference only. However, individual transcript sequences of the same gene can differ through naturally occurring variations (e.g. polymorphisms), each with its own valid existence. This clone is substantially in agreement with the reference, but a complete review of all prevailing variants is recommended prior to use. [More info](#)

OTI Annotation: This clone was engineered to express the complete ORF with an expression tag. Expression varies depending on the nature of the gene.

Components: The ORF clone is ion-exchange column purified and shipped in a 2D barcoded Matrix tube containing 10ug of transfection-ready, dried plasmid DNA (reconstitute with 100 ul of water).

Reconstitution Method:

1. Centrifuge at 5,000xg for 5min.
2. Carefully open the tube and add 100ul of sterile water to dissolve the DNA.
3. Close the tube and incubate for 10 minutes at room temperature.
4. Briefly vortex the tube and then do a quick spin (less than 5000xg) to concentrate the liquid at the bottom.
5. Store the suspended plasmid at -20°C. The DNA is stable for at least one year from date of shipping when stored at -20°C.

RefSeq: [NM_025336.2](#)

RefSeq Size: 1432 bp

RefSeq ORF: 684 bp

Locus ID: 66075

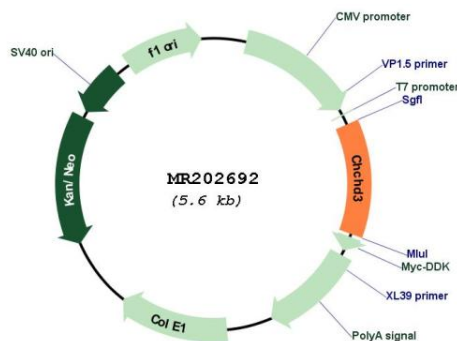
UniProt ID: [Q9CRB9](#)

Cytogenetics: 6 A3.3

MW: 26.3 kDa

Gene Summary: Component of the MICOS complex, a large protein complex of the mitochondrial inner membrane that plays crucial roles in the maintenance of crista junctions, inner membrane architecture, and formation of contact sites to the outer membrane. Has also been shown to function as a transcription factor which binds to the BAG1 promoter and represses BAG1 transcription. Plays an important role in the maintenance of the MICOS complex stability and the mitochondrial cristae morphology.[UniProtKB/Swiss-Prot Function]

Product images:



Circular map for MR202692