

Product datasheet for **MR202684**

Stk16 (BC005703) Mouse Tagged ORF Clone

Product data:

Product Type:	Expression Plasmids
Product Name:	Stk16 (BC005703) Mouse Tagged ORF Clone
Tag:	Myc-DDK
Symbol:	Stk16
Synonyms:	Krct, EDPK, PKL12
Vector:	pCMV6-Entry (PS100001)
E. coli Selection:	Kanamycin (25 ug/mL)
Cell Selection:	Neomycin
ORF Nucleotide Sequence:	>MR202684 representing BC005703 Red=Cloning site Blue=ORF Green=Tags(s)

TTTTGTAATACGACTCACTATAGGGCGGCCGGAATTCGTCGACTGGATCCGGTACCGAGGAGATCTGCC
GCC**CGATCGCC**

ATGGGCCACGCACTGTGTCTGCTCCCGGGAACTGTCATCATTGACAATAAGCGTTACCTCTTCGTCC
AGAAATTGGGGGAAGGTGGATTCAGCTATGTGGACCTAGTGGAGGCTTGCATGATGGACACTTCTACGC
CCTGAAGCGGATCCTGTGCCATGAGCAGCAAGACCAGGAAGAAGCCAAACGAGAGGCAGAGATGCATCGC
CTCTCCAGCATCCCAACATCCTTCGCCTCATGGCTTACTCTCTGAAAGAACGAGGTGCTAAGCATGAAG
CCTGGCTGCTGCTGCCCTTCTCAAGAAAGGTACTGTGGAATGAGATAGAAAGGCTGAAGGACCAAGG
CAGCTTCTGACTGAAGACCAGATCCTGCCGCTGTTGCTGGGTATCAGCAGAGGCCTTGAGGCTATTCAT
GCCAAAGGTTATGCACACAGGGACCTGAAGCCACCAATATTTTGCTTGGTGATGAGGGGCAGCCAGTTT
TAATGGACTTGGGTTCTATGAATCAAGCATGCATTCAAGTGGAGGCTCTCGCCAGGCACTAGCTCTTCA
GCTCTGGGCACTGTTCCAGGACTGGGCAGCTCAGCGGTGCACCATCTCCTACCGGCACCTGAACCTT
TTTCTGTGCAAAGCCACTGTGTCATCGATGAGCGGACTGATGTCTGGTCCC

ACGCGTACGCGGCCGCTCGAGCAGAAACTCATCTCAGAAGAGGATCTGGCAGCAAATGATATCCTGGATT
ACAAGGATGACGACGATAAGGTTTAA



[View online »](#)

Protein Sequence: >MR202684 representing BC005703
 Red=Cloning site Green=Tags(s)

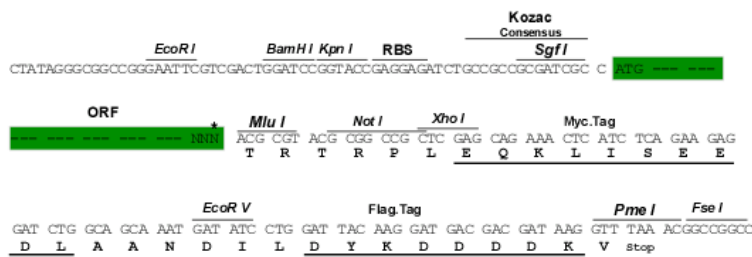
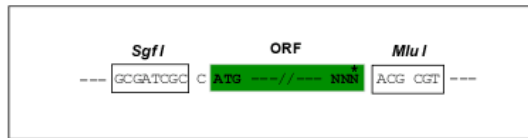
MGHALCVCSRGTVIIDNKRYL FVQKL GEGGF SYVDL VEGLHDGHFYALKRILCHEQQDQEEAQREAEMHR
 LFQHPNILRLMAYSLKERGAKHEAWLLLPFFKKGTLWNEIERLKDQGSFLTEDQILPLLLGISRGLAIIH
 AKGYAHRDLKPTNILLGDEGQPVLMDLGSMNQACIQVEGSRQALALQLWGHCSRTGQLSGAPSPTGHLNF
 FLCKATVSSMSGLMSGP

TRTRPLEQKLISEEDLAANDILDYKDDDDKV

Restriction Sites: Sgfl-MluI

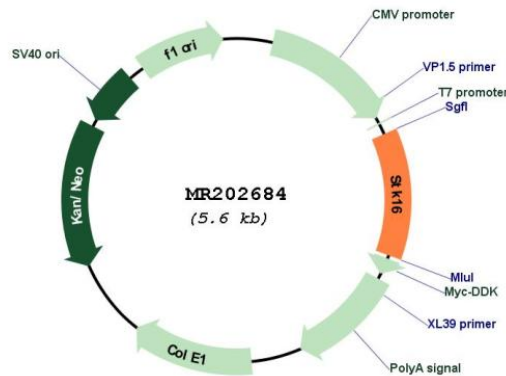
Cloning Scheme:

Cloning sites used for ORF Shuttling:



* The last codon before the Stop codon of the ORF

Plasmid Map:



ACCN: BC005703

ORF Size: 681 bp

OTI Disclaimer:	The molecular sequence of this clone aligns with the gene accession number as a point of reference only. However, individual transcript sequences of the same gene can differ through naturally occurring variations (e.g. polymorphisms), each with its own valid existence. This clone is substantially in agreement with the reference, but a complete review of all prevailing variants is recommended prior to use. More info
OTI Annotation:	This clone was engineered to express the complete ORF with an expression tag. Expression varies depending on the nature of the gene.
Components:	The ORF clone is ion-exchange column purified and shipped in a 2D barcoded Matrix tube containing 10ug of transfection-ready, dried plasmid DNA (reconstitute with 100 ul of water).
Reconstitution Method:	<ol style="list-style-type: none">1. Centrifuge at 5,000xg for 5min.2. Carefully open the tube and add 100ul of sterile water to dissolve the DNA.3. Close the tube and incubate for 10 minutes at room temperature.4. Briefly vortex the tube and then do a quick spin (less than 5000xg) to concentrate the liquid at the bottom.5. Store the suspended plasmid at -20°C. The DNA is stable for at least one year from date of shipping when stored at -20°C.
RefSeq:	BC005703.1
RefSeq Size:	1516 bp
RefSeq ORF:	683 bp
Locus ID:	20872
Cytogenetics:	1 C4
MW:	55.6 kDa
Gene Summary:	Membrane-associated protein kinase that phosphorylates on serine and threonine residues. In vitro substrates include DRG1, ENO1 and EIF4EBP1. Also autophosphorylates (By similarity). May be involved in secretory vesicle trafficking or intracellular signaling. May have a role in regulating stromal-epithelial interactions that occur during ductal morphogenesis in the mammary gland. May be involved in TGF-beta signaling. Able to autophosphorylate on Tyr residue; it is however unclear whether it has tyrosine-protein kinase toward other proteins. [UniProtKB/Swiss-Prot Function]