

Product datasheet for MR202661

Gjb2 (NM_008125) Mouse Tagged ORF Clone

Product data:

Product Type: Expression Plasmids
 Product Name: Gjb2 (NM_008125) Mouse Tagged ORF Clone
 Tag: Myc-DDK
 Symbol: Gjb2
 Synonyms: A1325222; Cnx26; Cx26; Gjb-2
 Mammalian Cell Selection: Neomycin
 Vector: pCMV6-Entry (PS100001)
 E. coli Selection: Kanamycin (25 ug/mL)
 ORF Nucleotide Sequence: >MR202661 ORF sequence
 Red=Cloning site Blue=ORF Green=Tags(s)

TTTTGTAATACGACTCACTATAGGGCGCCGGGAATTCGTCGACTGGATCCGGTACCGAGGAGATCTGCC
 GCCCGGATCGCC

ATGGATTGGGACACTCCAGAGCATCCTCGGGGTGTCAACAACTCCACCAGCATTGGAAAGATCT
 GGCTCACGGTCTTTCATCTTCCGCATCATGATCCTCGTGGTGGCTGCAAAGGAGGTGTGGGAGATGA
 GCAAGCCGATTTTGTCTGCAACACGCTCCAGCCTGGCTGCAAGAATGTATGCTACGACCACCACTCCCC
 ATCTCTCACATCCGGCTCTGGCTCTGCAGCTGATCATGGTGTCCAGCCAGCCCTCTGGTAGCTATGC
 ATGTGGCCTACCGGAGACATGAAAAGAAACGGAAGTTCATGAAGGAGAGATAAAGAACGAGTTTAAGGA
 CATCGAAGAGATCAAACCCAGAAGGTCCGTATCGAAGGGTCCCTGTGGTGGACCTACACCACCAGCATC
 TTCTTCCGGGTCACTTTGAAGCCGTCTTCATGTACGTCTTTACATCATGTACAATGGCTTCTTCATGC
 AACGTCTGGTGAATGCAACGCTTGGCCCTGCCCAATACAGTGGACTGCTTCATTTCCAGGCCACAGA
 AAAGACTGTCTTACCCTGTTTATGATTTCTGTGTCTGGAATTTGCATTCTGCTAAATATCACAGAGCTG
 TGCTATTTGTTTCGTTAGGTATTGCTCAGGAAAGTCCAAAAGACCAGTC

ACGCGTACGCGGCGCTCGAGCAGAACTCATCTCAGAAGAGGATCTGGCAGCAAATGATATCTGGATT
 ACAAGGATGACGACGATAAGGTTTAA



[View online »](#)

Protein Sequence: >MR202661 protein sequence
Red=Cloning site Green=Tags(s)

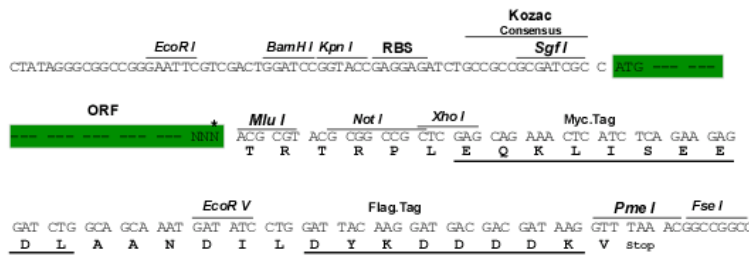
MDWGLTQSI LGGV NKHSTSIGKIWLT VLFIFRIMILVVA AKEVWGDEQADFV CNTLQPGCKNVCYDHHFP
 ISHIRLWALQLIMVSTPALLVAMHVAYRRHEKKRKFMKGEIKNEFKDIEEIKTKQKVRIEGLWWTYTTSI
 FFRVIFEAVFMYVFYIMYNGFFMQRLVKCNAWPCPNTVD CFI SRPTEKTVFTVFMISVSGICILLNITEL
 CYL FVRYCSGKSKRPV

TRTRPLEQKLISEEDLAANDILDYKDDDDKV

Restriction Sites: SgfI-MluI

Cloning Scheme:

Cloning sites used for ORF Shuttling:



ACCN: NM_008125

ORF Size: 681 bp

OTI Disclaimer: The molecular sequence of this clone aligns with the gene accession number as a point of reference only. However, individual transcript sequences of the same gene can differ through naturally occurring variations (e.g. polymorphisms), each with its own valid existence. This clone is substantially in agreement with the reference, but a complete review of all prevailing variants is recommended prior to use. [More info](#)

OTI Annotation: This clone was engineered to express the complete ORF with an expression tag. Expression varies depending on the nature of the gene.

Components: The ORF clone is ion-exchange column purified and shipped in a 2D barcoded Matrix tube containing 10ug of transfection-ready, dried plasmid DNA (reconstitute with 100 ul of water).

Reconstitution Method:

1. Centrifuge at 5,000xg for 5min.
2. Carefully open the tube and add 100ul of sterile water to dissolve the DNA.
3. Close the tube and incubate for 10 minutes at room temperature.
4. Briefly vortex the tube and then do a quick spin (less than 5000xg) to concentrate the liquid at the bottom.
5. Store the suspended plasmid at -20°C. The DNA is stable for at least one year from date of shipping when stored at -20°C.

RefSeq: [NM_008125.3](#)

RefSeq Size: 2404 bp

RefSeq ORF: 681 bp

Locus ID: 14619

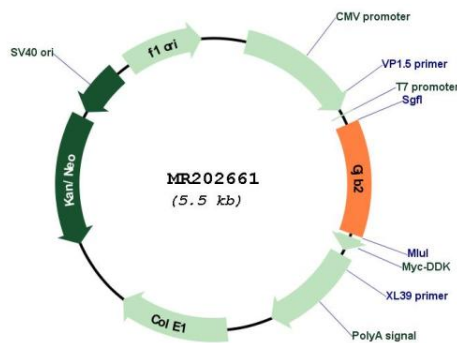
UniProt ID: [Q00977](#)

Cytogenetics: 14 30.1 cM

MW: 26.4 kDa

Gene Summary: Structural component of gap junctions (PubMed:15692151). Gap junctions are dodecameric channels that connect the cytoplasm of adjoining cells. They are formed by the docking of two hexameric hemichannels, one from each cell membrane (By similarity). Small molecules and ions diffuse from one cell to a neighboring cell via the central pore (PubMed:15692151). [UniProtKB/Swiss-Prot Function]

Product images:



Circular map for MR202661