

Product datasheet for MR202657

Atp6v1e1 (NM_007510) Mouse Tagged ORF Clone

Product data:

Product Type:	Expression Plasmids
Product Name:	Atp6v1e1 (NM_007510) Mouse Tagged ORF Clone
Tag:	Myc-DDK
Symbol:	Atp6v1e1
Synonyms:	2410029D23Rik; Atp6e; Atp6e2; Atp6v1e; D6Erttd385e; E2; P31; Vma4
Mammalian Cell Selection:	Neomycin
Vector:	pCMV6-Entry (PS100001)
E. coli Selection:	Kanamycin (25 ug/mL)
ORF Nucleotide Sequence:	>MR202657 representing NM_007510 Red=Cloning site Blue=ORF Green=Tags(s)

TTTTGTAATACGACTCACTATAGGGCGGCCGGAATTCGTCGACTGGATCCGGTACCGAGGAGATCTGCC
GCC**CGATCGCC**

ATGGCGCTCAGCGATGCAGATGTACAGAAGCAGATTAAGCACATGATGGCTTTCATTGAACAAGAAGCCA
ATGAGAAAGCAGAAGAAATAGATGCAAAGGCAGAAGAAGAGTTCAACATTGAGAAAGGTCGCCTTGTGCA
AACGCAAAGACTGAAGATTATGGAATACTACGAGAAGAAAGAAAAGCAGATTGAGCAGCAGAAGAAAATT
CAGATGTCCAACCTTGATGAATCAAGCAAGGCTCAAAGTCCTCAGAGCAAGGGATGACCTCATCACTGATC
TGCTAAATGAGGCAAAGCAGAGACTCAGTAAGGTGGTAAAAGATACGACCCGTTACCAAGTCTGCTGGA
TGGGCTGGTCCTTCAGGGCTTGTACCAGCTGCTGGAGCCTCGAATGATCGTGCCTGAGAAAACAAGAT
TTCCCTTTGGTGAAGGCCGAGTACAAAAGCAATCCCTATGTATAAAATTGCTACCAAAAAGGATGTTG
ATGTCCAGATTGACCAGGAGGCCTACCTGCCTGAGGAAATAGCTGGTGGCGTTGAGATCTATAATGGGGA
TCGCAAGATAAAGGTTTCCAACACCCTGGAAAGCCGGCTGGACCTGATAGCCCAGCAGATGATGCCAGAA
GTCCGTGGAGCCTTGTGGTGCATGCAATAGGAAGTTTCTGGAC

ACGCGTACGCGGCCGCTCGAGCAGAACTCATCTCAGAAGAGGATCTGGCAGCAAATGATATCCTGGATT
ACAAGGATGACGACGATAAGGTTTAA



[View online »](#)

Protein Sequence: >MR202657 representing NM_007510
Red=Cloning site Green=Tags(s)

MALSDADVQKQIKHMMAFIEQEANEKAEIIDAKAEFEFNIEKGRVQTQRLKIMEYYEKKEKQIEQQKKI
 QMSNLMNQARLKVLRARDDLITDLLNEAKQRLSKVVKDTRYQVLLDGLVLQGLYQLLEPRMIVRCRKQD
 FPLVKA AVQKAIIPMYKIATKKD VDVQIDQEA YLPEE IAGGVEIYNGDRKIKVSNTLESRLDLIAQQMMPE
 VRGALFGANANRKFLD

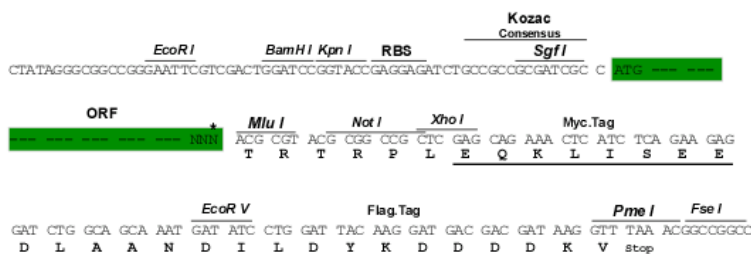
TRTRPLEQKLISEEDLAANDILDYKDDDDKV

Chromatograms: https://cdn.origene.com/chromatograms/mm9074_h11.zip

Restriction Sites: SgfI-MluI

Cloning Scheme:

Cloning sites used for ORF Shuttling:



* The last codon before the Stop codon of the ORF

ACCN: NM_007510

ORF Size: 678 bp

OTI Disclaimer: The molecular sequence of this clone aligns with the gene accession number as a point of reference only. However, individual transcript sequences of the same gene can differ through naturally occurring variations (e.g. polymorphisms), each with its own valid existence. This clone is substantially in agreement with the reference, but a complete review of all prevailing variants is recommended prior to use. [More info](#)

OTI Annotation: This clone was engineered to express the complete ORF with an expression tag. Expression varies depending on the nature of the gene.

Components: The ORF clone is ion-exchange column purified and shipped in a 2D barcoded Matrix tube containing 10ug of transfection-ready, dried plasmid DNA (reconstitute with 100 ul of water).

Reconstitution Method:

1. Centrifuge at 5,000xg for 5min.
2. Carefully open the tube and add 100ul of sterile water to dissolve the DNA.
3. Close the tube and incubate for 10 minutes at room temperature.
4. Briefly vortex the tube and then do a quick spin (less than 5000xg) to concentrate the liquid at the bottom.
5. Store the suspended plasmid at -20°C. The DNA is stable for at least one year from date of shipping when stored at -20°C.

RefSeq: [NM_007510.3](#)

RefSeq Size: 1219 bp

RefSeq ORF: 681 bp

Locus ID: 11973

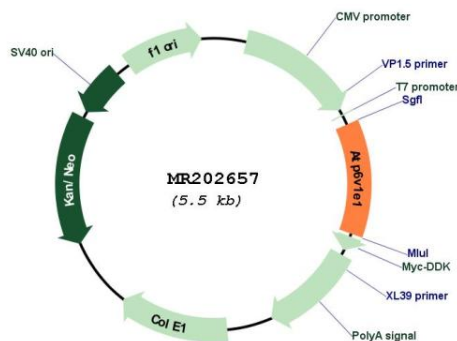
UniProt ID: [P50518](#)

Cytogenetics: 6 57.01 cM

MW: 26.2 kDa

Gene Summary: Subunit of the peripheral V1 complex of vacuolar ATPase essential for assembly or catalytic function. V-ATPase is responsible for acidifying a variety of intracellular compartments in eukaryotic cells.[UniProtKB/Swiss-Prot Function]

Product images:



Circular map for MR202657