

Product datasheet for MR202653

Rrp36 (NM_144857) Mouse Tagged ORF Clone

Product data:

| | |
|---------------------------|---|
| Product Type: | Expression Plasmids |
| Product Name: | Rrp36 (NM_144857) Mouse Tagged ORF Clone |
| Tag: | Myc-DDK |
| Symbol: | Rrp36 |
| Synonyms: | MGC19067 |
| Mammalian Cell Selection: | Neomycin |
| Vector: | pCMV6-Entry (PS100001) |
| E. coli Selection: | Kanamycin (25 ug/mL) |
| ORF Nucleotide Sequence: | >MR202653 ORF sequence Red=Cloning site Blue=ORF Green=Tags(s) |

TTTTGTAATACGACTCACTATAGGGCGGCCGGAATTCGTCGACTGGATCCGGTACCGAGGAGATCTGCC
GCCCGATCGCC

ATGGAGGGCGGGGAGGTGACTGGCGACCGGCTGAAGGCAGACACATCTGACATGTCATTTGAGGAGCTGT
TGAGATTACAGGGCCAAGGGAGACCCAAGGCACACAAACAATTGGTAGCTGAAACAGCACTAGAACCGC
AAGCCCCAACACCCGTGTGTGTCGCCGATAAGCACCGCCTCTGAAATGTCAGCTAAAGTCCGGGTG
CCATTCTTACGTCAGGTGGTCCCATCAGTAAAAAGTCGCCGAGACCCCGCTTTGATGATCTGTCAG
GGGACTATAACCCTGAAGTGTGGACAAAATTACCAGTTCCTGAATGATATCCGAGCCAAGAGAAGCA
GCTTGTGAAAAAGCAGTTGAAGAAGCACCGCTCAGGGGAGGAGCATGACAACTGCAACAGCTGCTTCAG
CGGATGGAGCAACAAGAGATGGCACAGCAGGAACGCAAGCAGCAGCAGGAGCTGCCGTTGGCCTTGAAGC
AGGAGCGCCGGGCTCAGGCACAGCAGGGCCATCGGCCATACTTCTGAAGAAATCTGAGCAGCGGCAGCT
GGCCTTGGCTGAGAAGTTCAAGGAGCTGAGACGCAGCAAGAAGCTGGAGAGTTTCTGAGTCGAAAGAGG
CGGCGAACGCAGGCAAGGACAGGAGGCACCTCCCGCTGAGCAAGGAG

ACGCGTACGCGGCCGCTCGAGCAGAACTCATCTCAGAAGAGGATCTGGCAGCAAATGATATCCTGGATT
ACAAGGATGACGACGATAAGGTTTAA



[View online »](#)

Protein Sequence: >MR202653 protein sequence
Red=Cloning site Green=Tags(s)

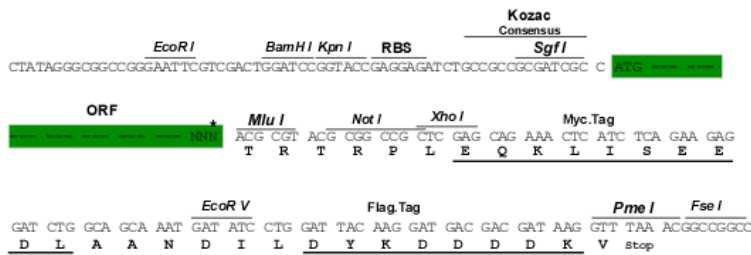
MEGGEVTDGRLKADTSDMSFEELLRLQGQGRPKAHKQLVAGNSTRTRSPQQPVCVADKHRPLEMSAKVRV
 PFLRQVVPISKKVARDPRFDDLSGDYNPEVFDKTYQFLNDIRAKEKQLVKKQLKKHRSGEHDKLQQLLQ
 RMEQQEMAQQERKQQQLRLALKQERRAQAQQGHRPYFLKKSEQRQLALAEKFKELRRSKKLESFLSRKR
 RRNAGKDRRHPLSKE

TRTRPLEQKLISEEDLAANDILDYKDDDDKV

Restriction Sites: SgfI-MluI

Cloning Scheme:

Cloning sites used for ORF Shuttling:



* The last codon before the Stop codon of the ORF

ACCN: NM_144857

ORF Size: 681 bp

OTI Disclaimer: The molecular sequence of this clone aligns with the gene accession number as a point of reference only. However, individual transcript sequences of the same gene can differ through naturally occurring variations (e.g. polymorphisms), each with its own valid existence. This clone is substantially in agreement with the reference, but a complete review of all prevailing variants is recommended prior to use. [More info](#)

OTI Annotation: This clone was engineered to express the complete ORF with an expression tag. Expression varies depending on the nature of the gene.

Components: The ORF clone is ion-exchange column purified and shipped in a 2D barcoded Matrix tube containing 10ug of transfection-ready, dried plasmid DNA (reconstitute with 100 ul of water).

Reconstitution Method:

1. Centrifuge at 5,000xg for 5min.
2. Carefully open the tube and add 100ul of sterile water to dissolve the DNA.
3. Close the tube and incubate for 10 minutes at room temperature.
4. Briefly vortex the tube and then do a quick spin (less than 5000xg) to concentrate the liquid at the bottom.
5. Store the suspended plasmid at -20°C. The DNA is stable for at least one year from date of shipping when stored at -20°C.

RefSeq: [NM_144857.1](#), [NP_659106.1](#)

RefSeq Size: 1212 bp

RefSeq ORF: 681 bp

Locus ID: 224823

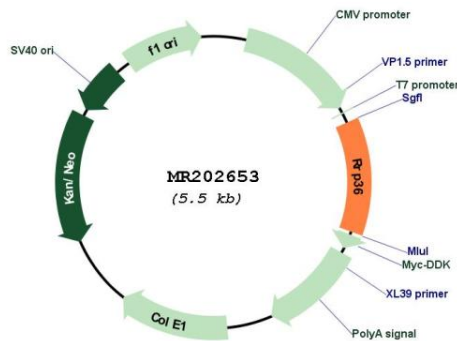
UniProt ID: [Q3UFY0](#)

Cytogenetics: 17 C

MW: 26.6 kDa

Gene Summary: Involved in the early processing steps of the pre-rRNA in the maturation pathway leading to the 18S rRNA.[UniProtKB/Swiss-Prot Function]

Product images:



Circular map for MR202653